

March 10, 2017

## Gilbane Construction Update

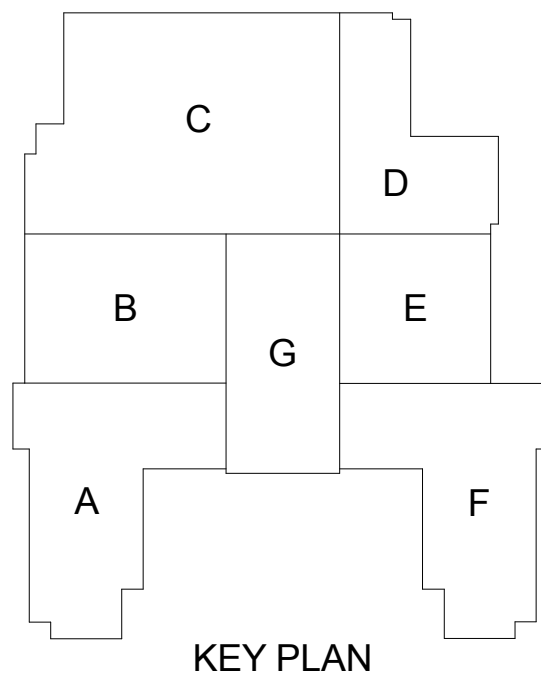
### Activities in progress as of March 10, 2017:

- ▶ Floor prep for quarry tile installation on Area D Cedar Level Kitchen in progress.
- ▶ Demo for new Area G Cedar Level courtyard entrance started.
- ▶ Interior stone veneer installation on Area F Atrium in progress.
- ▶ Rubber wall base installation on Area A 3<sup>rd</sup> & 2<sup>nd</sup> floor started.
- ▶ Mechanical Room piping & electrical rough-in on Area C Washington Level in progress.
- ▶ Porcelain floor tile on Area C Washington Level bathrooms in progress.
- ▶ Wood flooring installation on Area G 4<sup>th</sup> floor in progress.
- ▶ Painting on Area A Washington Level in progress.
- ▶ Casework installation on Area A Cedar Level in progress.
- ▶ Taping coffered ceilings on Area G 2<sup>nd</sup> floor in progress.
- ▶ Drywall installation on Areas C, D & E Cedar Level in progress.
- ▶ Coffered ceiling layout on Area G Cedar Level in progress.

### Upcoming Project Milestones:

- ▶ Competition Gym telescoping bleacher installation scheduled to start on 04/17/17.

### Construction Key Plan:





Wall Base Installation Area A 3rd Floor



Quarry Tile Floor Prep In Kitchen on Area D Cedar Level



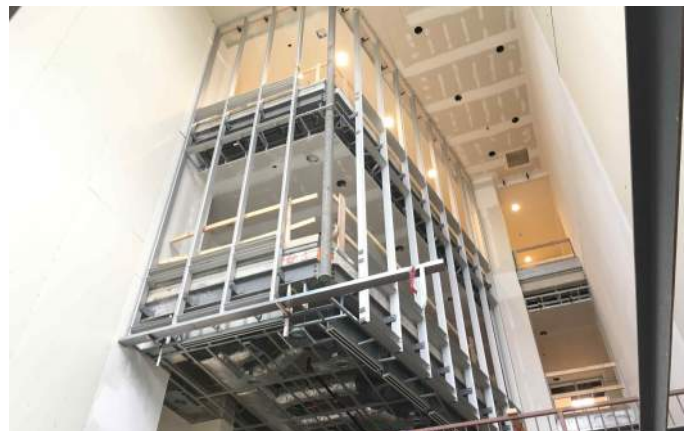
Bathroom Accessories Installation on Area A Cedar Level



Casework Installation Area A Cedar Level



Interior Veneer Stone Installation Area F Atrium



Curtainwall Installation Area A Atrium

