

CHUH COMMUNITY MEETING

ROXBORO AND MONTICELLO MIDDLE SCHOOLS

FEBRUARY 24, 2016



CHUH COMMUNITY MEETING AGENDA



6:00-7:00

- Welcome and Greeting – Dr. Dixon
- Update from PMC – Steve Zannoni, Director
- MNI/TCC Team Introductions – Firm Overviews
- The Process: Evaluate – Engage - Execute
- This evenings objective/goals

7:00-8:00

- Feed back – dots
- Report out
- Conclude – What's next?

LAY FACILITIES COMMITTEE

RECOMMENDATIONS FOR COMMUNITY INPUT



- The committee recommends that the BoE continue to involve the community in the facilities process throughout the project, with care taken to ensure input from those who will use our school buildings, including teachers, administrators, custodians and other staff.
- The committee recommends that the BoE determine what structure will best allow significant community participation in all phases of the facilities project.

LAY FACILITIES COMMITTEE

COMMUNITY VALUES



Our committee conducted a community survey that gathered input from more than 800 District residents. Full survey results, including responses to open-ended questions, accompany this report. Asked to prioritize a list of 13 community values generated at community meeting in 2011, they identified the top five as:

1. Align Facilities to the Educational Program
2. Respect the Neighborhood Context
3. Weigh Initial Costs and Operating Costs
4. Promote Safety and Security
5. Enable Flexible Solutions

PROJECT TEAM



CMR TEAM



Marty Burgwinkle
Project Executive
Turner Construction Company



Gwenay Coniglio
President
The Coniglio Company



Jack Kellogg, LEED AP
Project Manager
Turner Construction Company

Chuck Kostrab
Preconstruction
Manager

PRECONS-
TRUCTION

Deb Anderson
Preconstruction
Manager

ACCOUNTING

Phil Polito, LEED AP
Project
Engineer

ROXBORO
MIDDLE SCHOOL

Ivan Salgado
Project
Superintendent

Tyrone Williams, LEED GA
Project
Engineer

MONTICELLO
MIDDLE SCHOOL

Rick Collins, LEED GA
Project
Superintendent

TURNER CONSTRUCTION COMPANY | THE CONIGLIO COMPANY

1

Builder in Education

*Engineering News-Record, Top Contractors in
General Building, Top 400 Sourcebook, 2015*



MOODY NOLAN FIRM OVERVIEW

180

DESIGN PROFESSIONALS
ACROSS EIGHT OFFICES

215

LOCAL, STATE AND NATIONAL
DESIGN CITATIONS

#59

ON ARCHITECTURAL RECORD'S
TOP 300

5+

MILLION SQUARE FEET OF K-12
FACILITIES IN THE LAST TEN
YEARS



A/E TEAM



CURTIS J. MOODY
FAIA, NCARB, LEED AP

Principal-in-Charge of Design
MOODY NOLAN



D. BRENT WILCOX
AIA, LEED AP BD+C

Director of Education Studio/
Planner
MOODY NOLAN



ANNE M. HARTMAN
RA

Executive Project Manager
MOODY NOLAN



DEBRA KOLESAR

Interior Designer
MOODY NOLAN



**M. CATHERINE
MURRAY**

Designer
OSLUND AND ASSOCIATES



**DOUGLAS S.
LANCASHIRE**
PE, LEED AP, CEM, CGBE

Senior Mechanical Engineer
OSBORN ENGINEERING

OSLUND FIRM OVERVIEW

12

DESIGN PROFESSIONALS
ACROSS 2 OFFICES

76

LOCAL, STATE AND NATIONAL
DESIGN CITATIONS

2014

DESIGN FIRM OF THE YEAR
MINNEAPOLIS STAR TRIBUNE

17+

K-12 CAMPUS PLANS
THROUGHOUT THE MIDWEST

OSBORN FIRM OVERVIEW

50+

OHIO K-12 SCHOOL
DISTRICTS OSBORN
HAS PROVIDED RECENT
DESIGN +Cx SERVICES

100

PROFESSIONALS
ACROSS THREE OFFICES
IN OHIO

250+

ENERGY AUDITS

123

YEAR TRADITION

21

LEED PROFESSIONALS
(IN ADDITION TO CERTIFIED
CEM, CBCP, CGBE)



WHY US

- Broad Range of Educational Expertise**
- Extensive Urban School Planning Experience**
- Proven Community Engagement**
- Renovation Experience**
- Sustainability Experts**
- Collaborative Process**
- Schedule and Cost Control**
- Responsive Architecture**

THE PROCESS

Evaluate-Engage-Execute



NEW ALBANY-PLAIN LOCAL SCHOOLS 1-8 BUILDING

EVALUATE



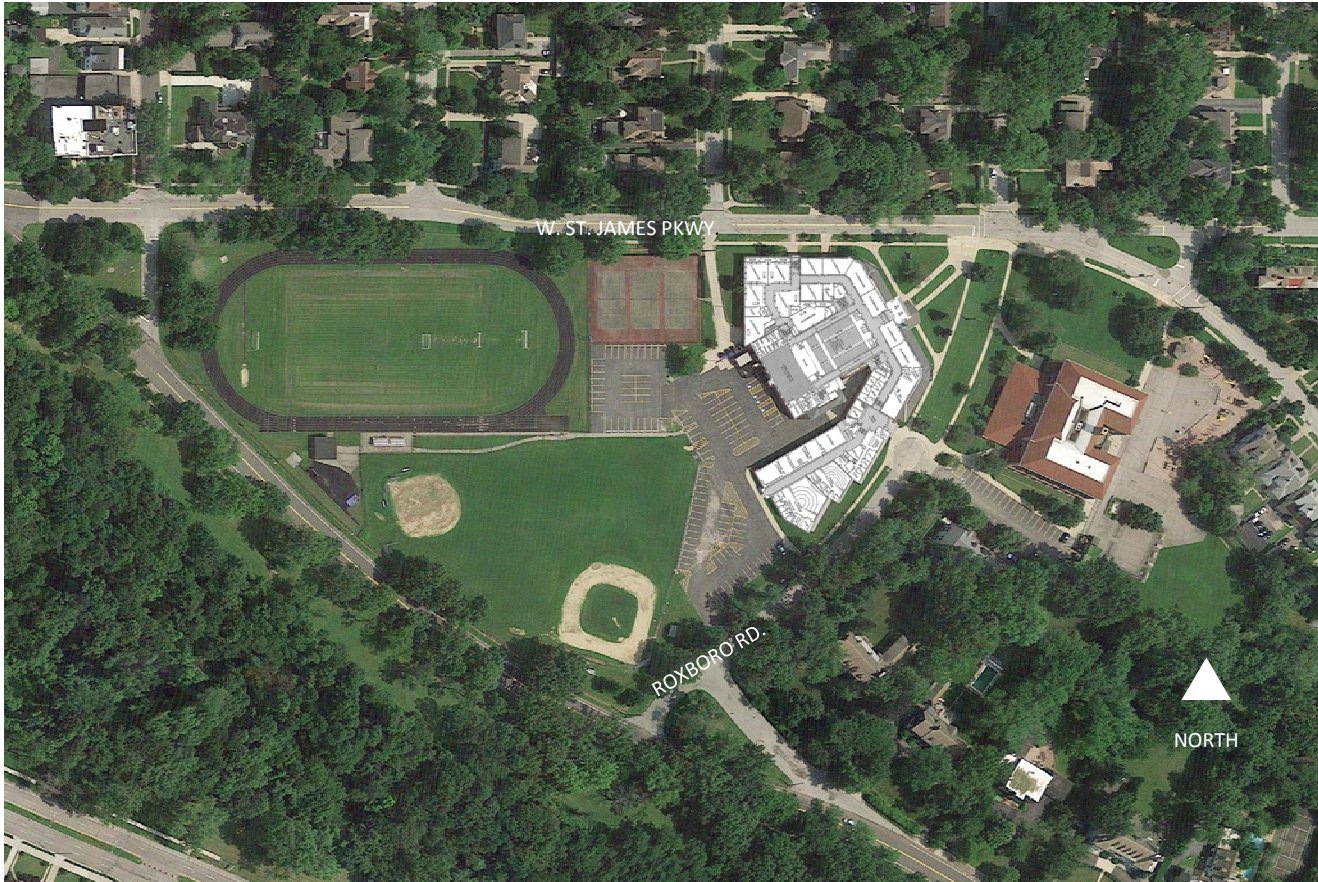
DUNBAR SENIOR HIGH SCHOOL

GATHERING THE DATA - ASSESSING



- ✓ OFCC Building Condition Assessments
- ✓ Several Walk-throughs of Each Building w/A-E-CMR Team
- ✓ Environmental/Abatement Reports
- ✓ Soil Borings
- ✓ Thermographic Envelope Studies/Reports
- ✓ Site Surveys
- ✓ Traffic Studies
- ✓ Engineer Review of Mechanical/Electrical/Plumbing and Technology System
- ✓ Engineer Review of Structural Systems
- ✓ Review of Existing configurations/accessibility/Functions of Spaces/program/circulation

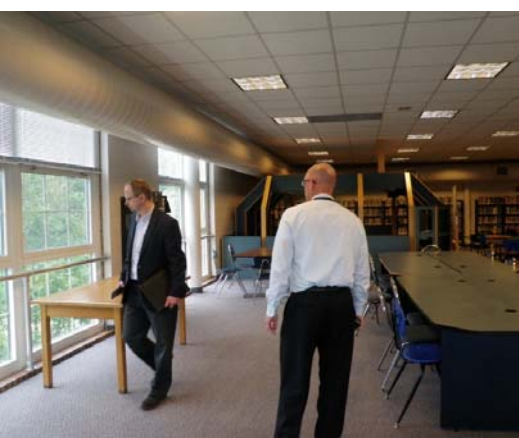
ROXBORO MIDDLE SCHOOL SITE



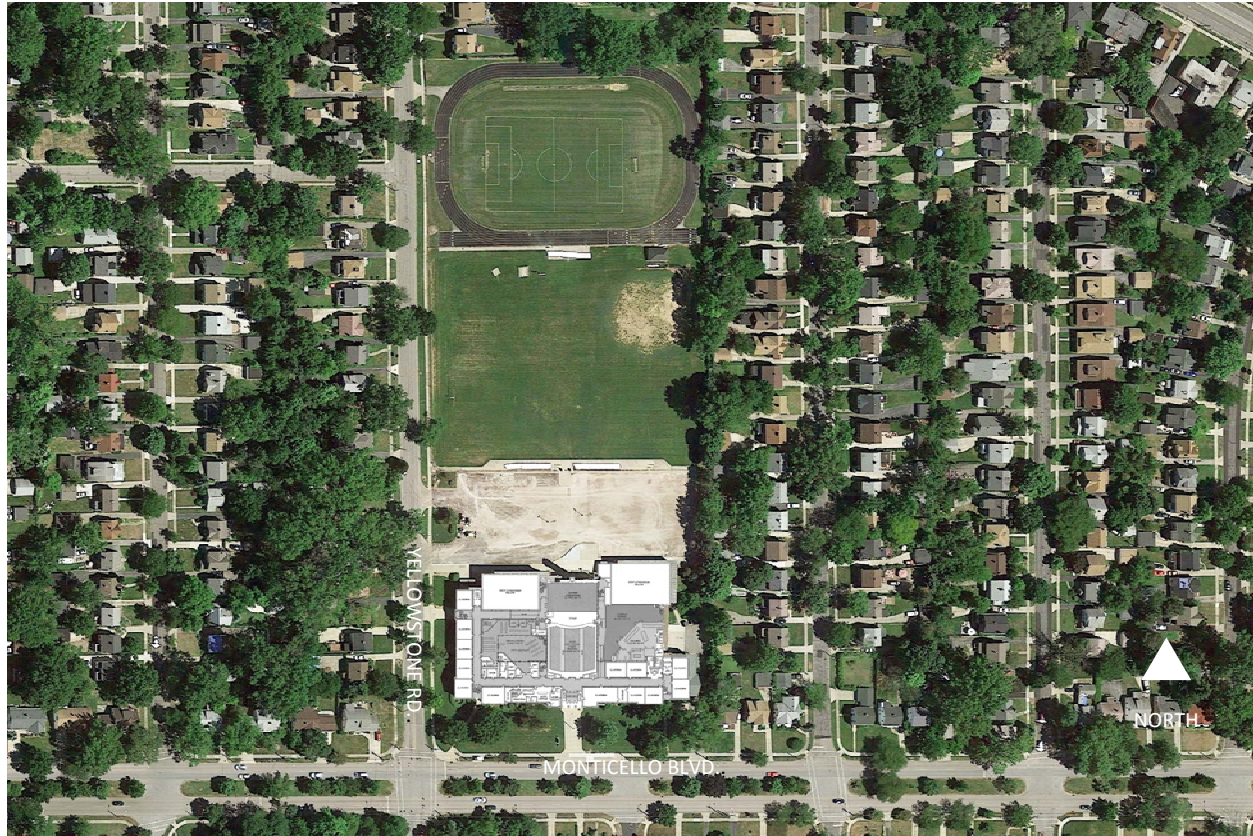
ROXBORO MIDDLE SCHOOL CONTEXT



ROXBORO MIDDLE SCHOOL EXISTING



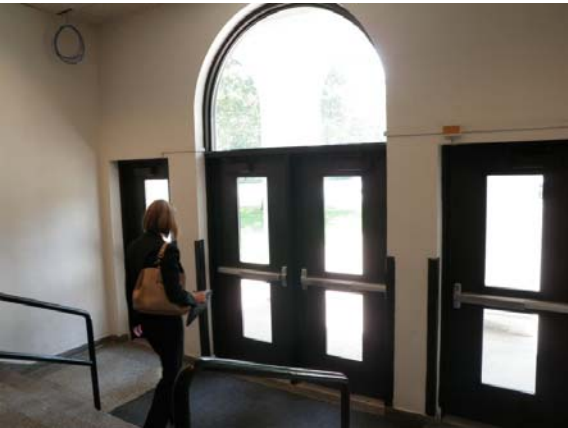
MONTICELLO MIDDLE SCHOOL SITE



MONTICELLO MIDDLE SCHOOL CONTEXT



MONTICELLO MIDDLE SCHOOL EXISTING



ENGAGE



COLUMBUS EAST HIGH SCHOOL

COLLABORATIVE DESIGN PROCESS

ECO & LEED
CHARRETTES

COMMUNITY
MEETINGS

STAFF/END USER
GROUP MEETINGS

DESIGN
CHARRETTES

THINK TANK
MEETING



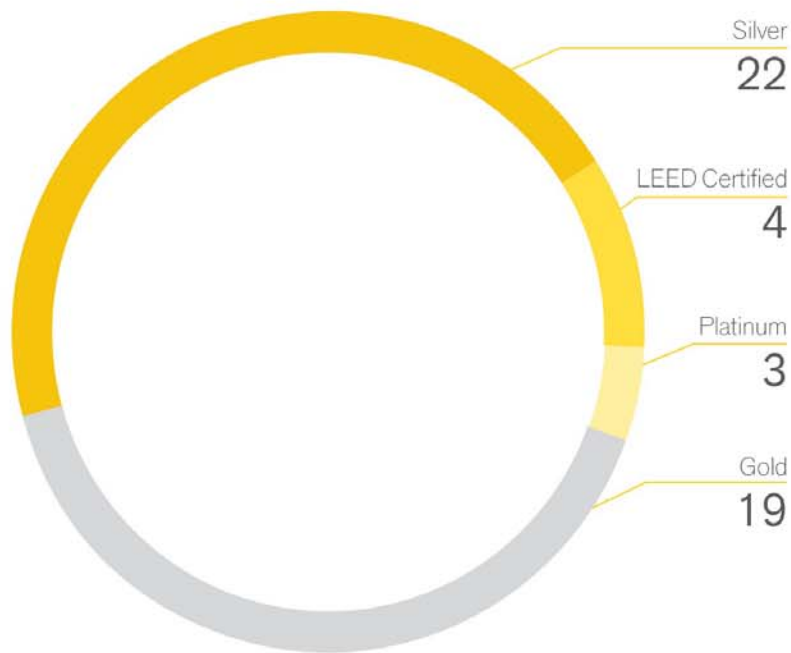
ENGAGEMENT - STATUS



- ✓ Visioning Session – January 25th
Staff and student representation, PTA.
- ✓ Charrette/Visioning – February 17th
Staff, students, PTA, FAC, City Council, City Planning, BoE, Teachers Union.
- ✓ Community Meeting #1 – February 24th
- 3rd Grade Visioning Art Project – TBD.
- BoE Work sessions, meeting – March, April, May.
- Community Meeting #2 – April, May.
- Eco Charrette - TBD

SUSTAINABLE DESIGN

SUSTAINABLE DESIGN PROJECTS CERTIFICATION BREAKDOWN



TOTAL NUMBER OF COMPLETED SUSTAINABLE DESIGN PROJECTS

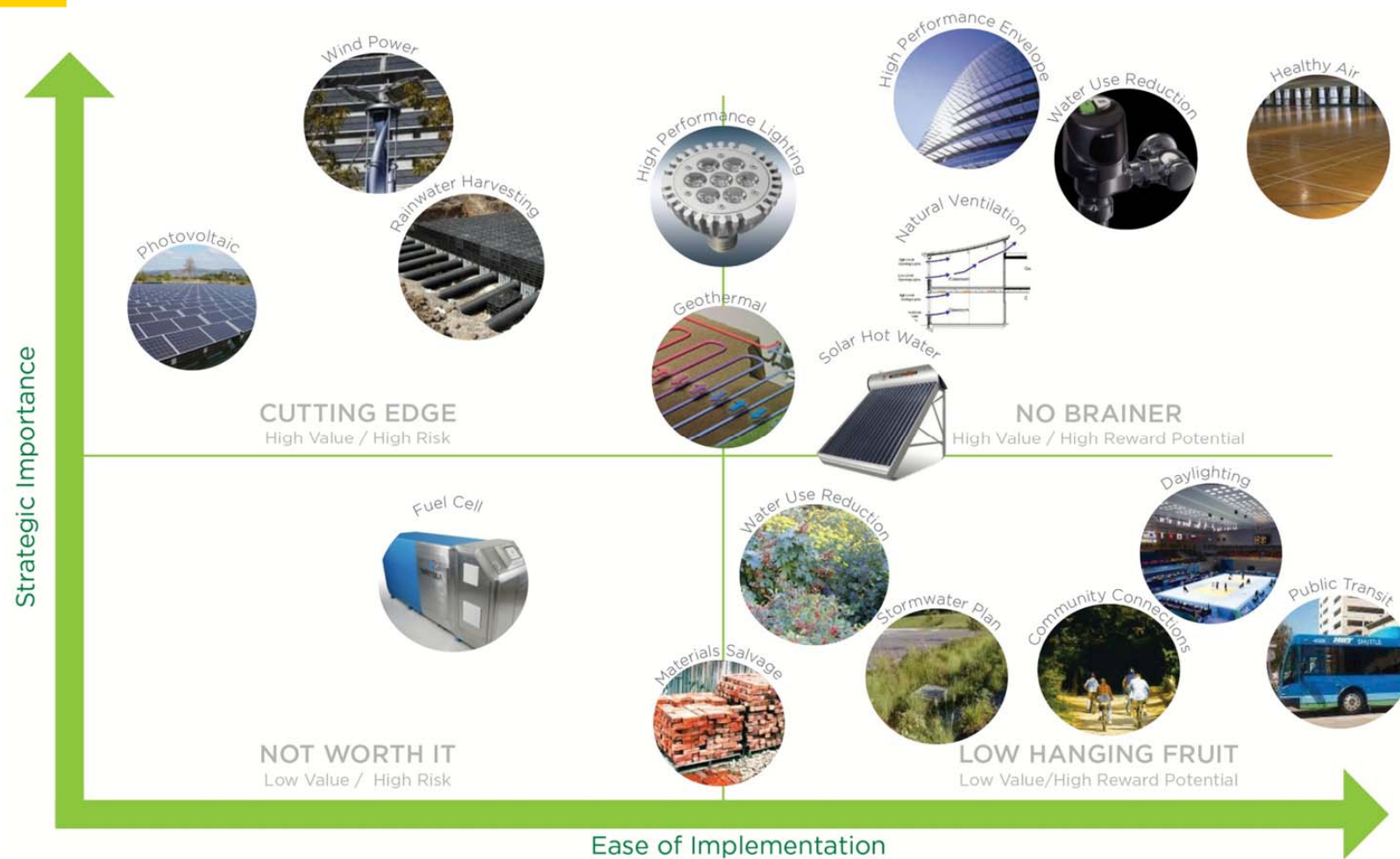
106

SUSTAINABLE DESIGN PROJECTS TOTAL SQUARE FOOTAGE

4.8	7.4
MILLION REGISTERED	MILLION CERTIFIED

1.9 BILLION
DOLLARS WORTH OF
LEED CERTIFIED

Sustainable Design Integration Strategy



9 SQUARE DESIGN PROCESS

9

INNOVATIVE
IDEAS



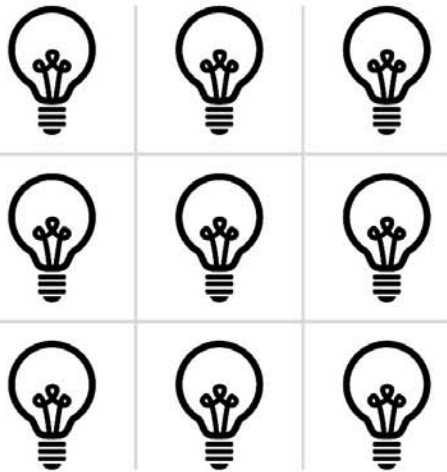
3

REFINED
IDEAS



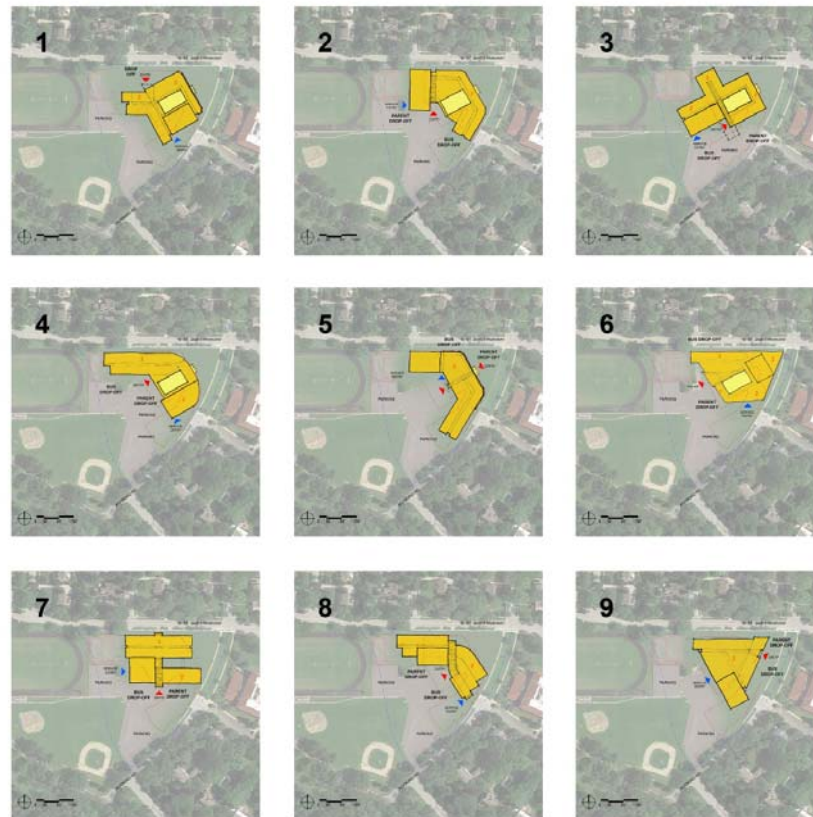
1

CONSENSUS-DRIVEN
DESIGN



ROXBORO MIDDLE SCHOOL

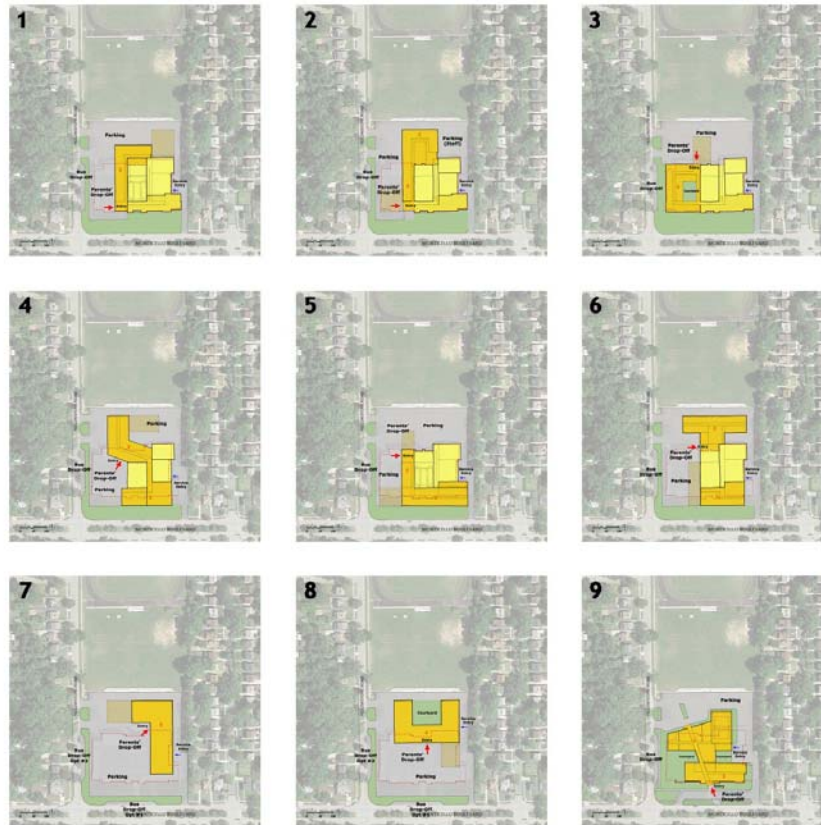
- 5 Renovation
- 1 “Hybrid”
- 3 New Construction



- 9 SQUARE

MONTICELLO MIDDLE SCHOOL

- 6 Renovation
- 3 New Construction



- 9 SQUARE

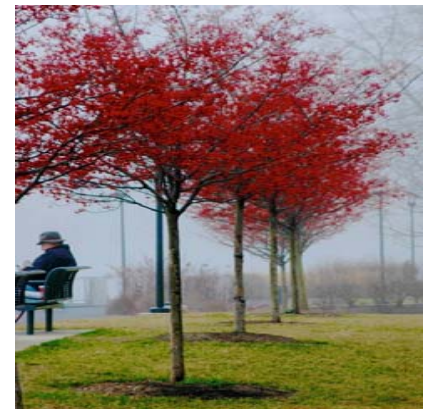
VISION



DC DEPARTMENT OF GENERAL SERVICES DUNBAR SENIOR HIGH SCHOOL

EXTERIOR ENVIRONMENTS – SITE

SEASONALITY



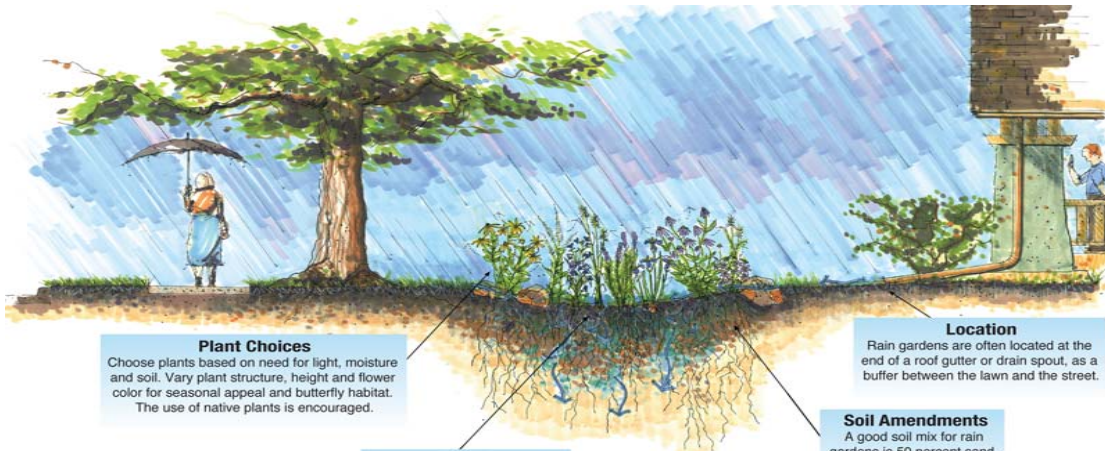
EXTERIOR ENVIRONMENTS – SITE

OUTDOOR CLASSROOM



EXTERIOR ENVIRONMENTS – SITE

RAIN GARDENS



Plant Choices

Choose plants based on need for light, moisture and soil. Vary plant structure, height and flower color for seasonal appeal and butterfly habitat. The use of native plants is encouraged.

Depth

A typical rain garden is between six and nine inches deep. This depth, proportionate to surface area, helps ensure water will infiltrate quickly and not pond.

Size

A rain garden is typically 7 to 20 percent the size of the impervious surface that generates runoff.

Location

Rain gardens are often located at the end of a roof gutter or drain spout, as a buffer between the lawn and the street.

Soil Amendments

A good soil mix for rain gardens is 50 percent sand, 30 percent compost, and 20 percent topsoil.



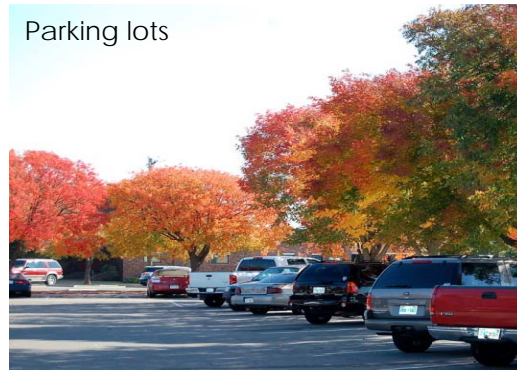
EXTERIOR ENVIRONMENTS – SITE

LANDSCAPE AREAS

Restoring tree canopy



Parking lots



Entry Areas



EXTERIOR ENVIRONMENTS - SITE

PEDESTRIAN SAFETY

STUDENT
PICKUP
AND
DROP OFF
AREA



INTERIOR ENVIRONMENTS

CREATE.

daylighting

sustainable
durable
materials

branding &
wayfinding

KIPP: CENTRAL OHIO CHARTER SCHOOL

LEARNING ENVIRONMENTS

integration of
technology

acoustics

flexible
furnishings

NEW ALBANY-PLAIN LOCAL SCHOOLS 1-8 BUILDING

EXTERIOR ENVIRONMENTS - BUILDING



EXTERIOR ENVIRONMENTS - BUILDING



EXECUTE



REYNOLDSBURG CITY SCHOOLS STEM HIGH SCHOOL