

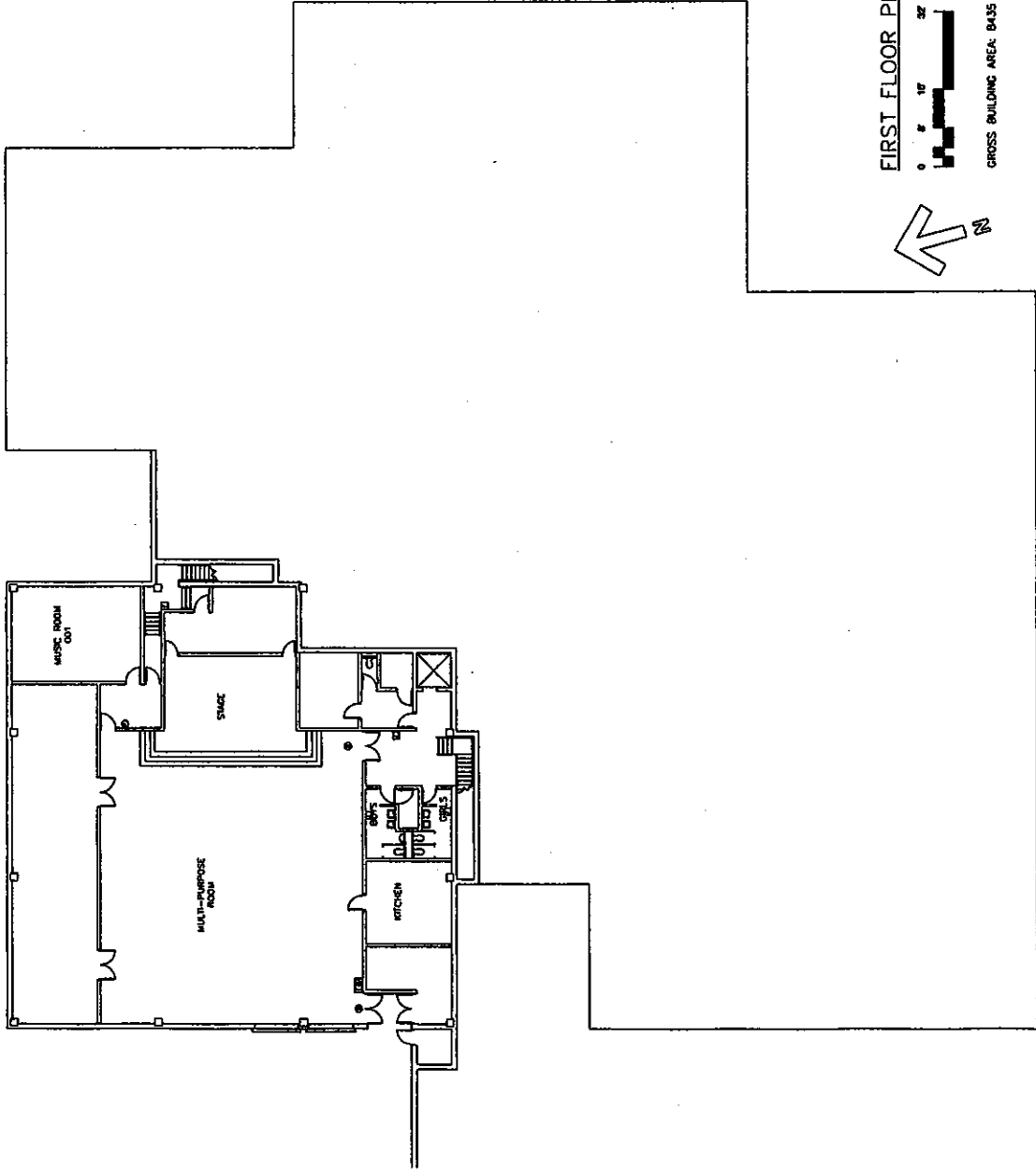
COVENTRY: BUILDING INFORMATION DATA SHEET

<u>Building Use:</u>	Originally constructed as an "open-plan" K-6 Elementary School building, it is currently unoccupied.
<u>Number of Classrooms:</u>	30
<u>Total Building Area:</u>	61,200 square feet
<u>Year Built:</u>	1974, no additions
<u>Current Zoning:</u>	City of Cleveland Heights zoning classification A - single family Note: Any future use other than as zoned will require city approval.
<u>Site Area:</u>	5.88 acres
<u>Major Site Features:</u>	Large wooden play structure Paved hard surface areas Significant topographical elevation changes
<u>Total Parking:</u>	42 spaces
<u>Construction:</u>	Steel columns and framing on a combination of concrete footers and caisson foundations, sloped shingle roof, masonry, concrete and drywall interiors
<u>Mechanical System:</u>	Gas-fired rooftop heating, ventilating and air-conditioning units and some electrical baseboard heaters.
<u>Electrical System:</u>	Outdoor pad-mounted 480/277V, 3-phase, 4-wire CEI transformer to main distribution, branch wiring and sub distribution panels throughout the building.
<u>Immediate Needs:</u>	Roof replacement - \$450,000
<u>Operational Costs:</u>	\$101,679
<u>Considerations:</u>	Lack of parking Difficult to add parking Has an elevator

Operational Costs:

Gas	\$	2,822
Electric		50,803
Water/Sewer		679
Trash		-0-
Telephone		-0-
Internet		-0-
Play Structure Maintenance		25,000
Grounds Maintenance and Inspection		12,375
Security Guards		10,000
<u>Total Annual Cost:</u>	\$	101,679

- ⊕ EXIT SIGN
- ⚡ BATTERY PACK EMERGENCY LIGHT
- ☒ FIRE ALARM VISUAL DEVICE
- ☒ FIRE ALARM PULL STATION
- ⊙ FIRE EXTINGUISHER



FIRST FLOOR PLAN



GROSS BUILDING AREA: 8435 SF

Lower Level Plan

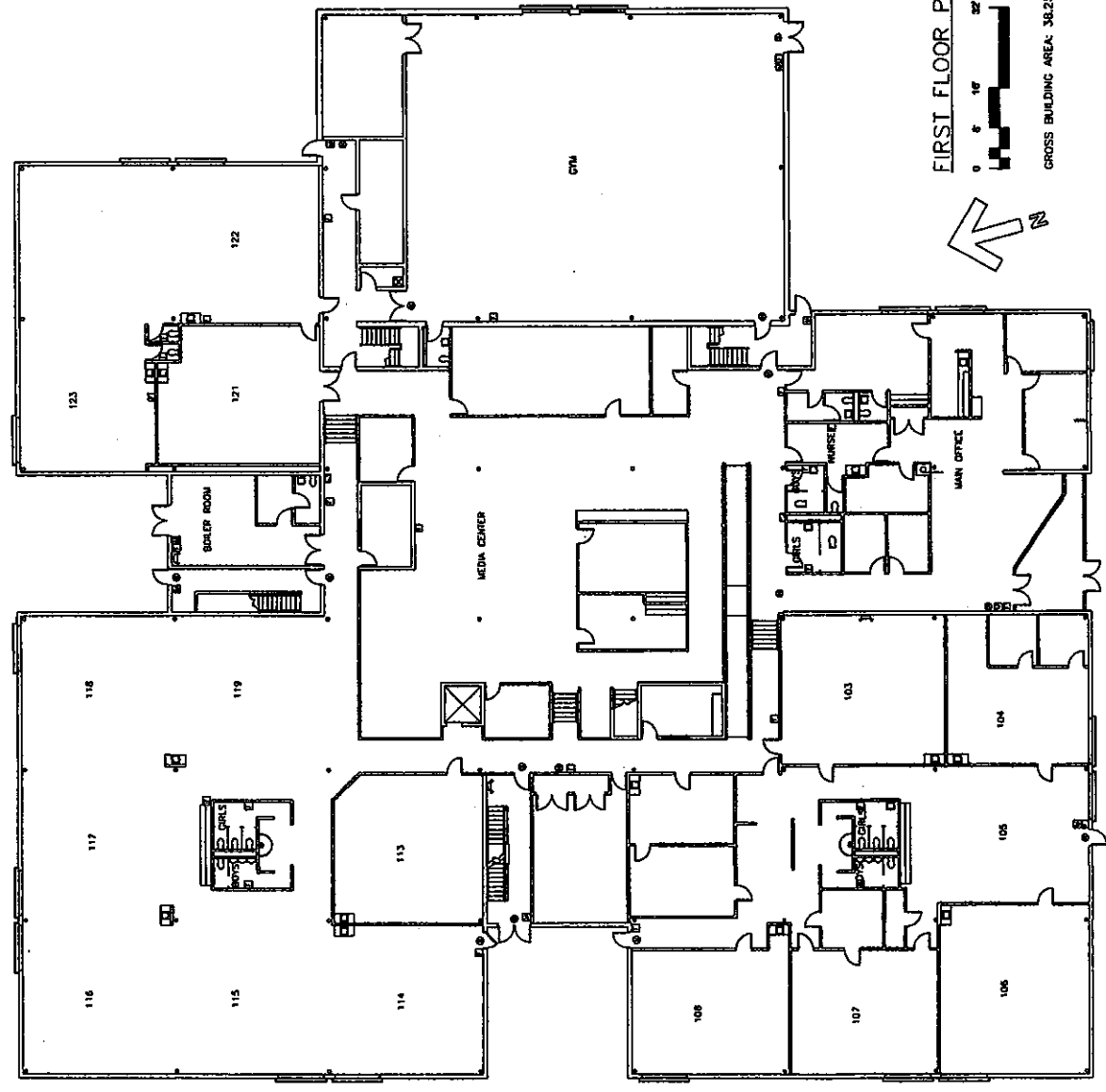
Coventry Elementary School
 2943 Washington Blvd.
 Cranford High-Utility Heights City School District

P.01

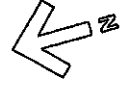
DATE: 10/18/07



- ⊕ EXIT SIGN
- ⊕ BATTERY PACK EMERGENCY LIGHT
- ⊕ FIRE ALARM VISUAL DEVICE
- ⊕ FIRE ALARM PULL STATION
- ⊕ FIRE EXTINGUISHER



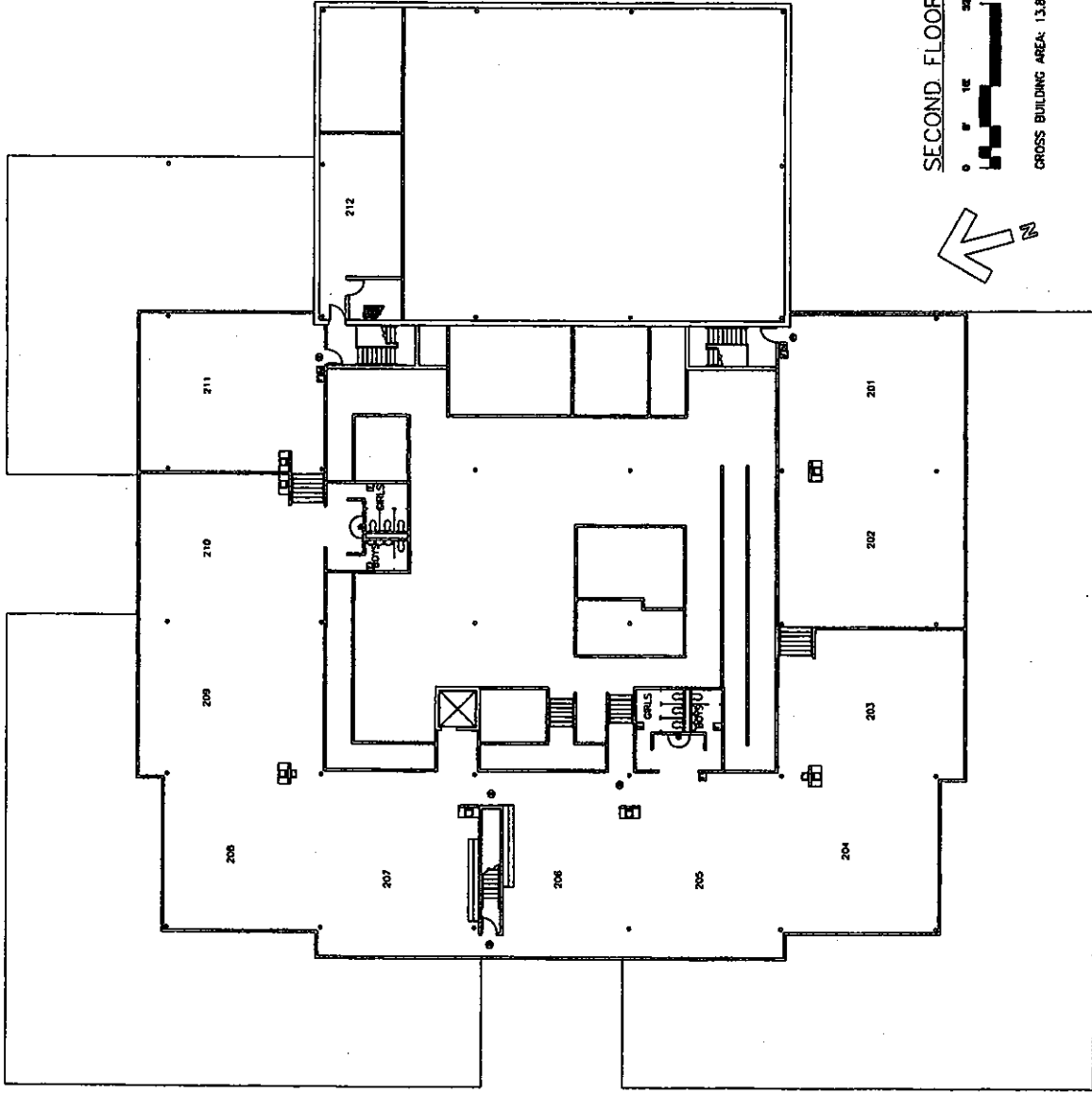
FIRST FLOOR PLAN



GROSS BUILDING AREA: 38,250 SF

First Floor Plan
 Coverdell Elementary School
 2843 Washington Blvd.
 Cleveland Heights University Heights City School District
P.02
 DATE: 10/14/09

- ⊕ EXIT SIGN
- ⊕ BATTERY PACK EMERGENCY LIGHT
- ⊕ FIRE ALARM VISUAL DEVICE
- ⊕ FIRE ALARM PULL STATION
- ⊕ FIRE EXTINGUISHER



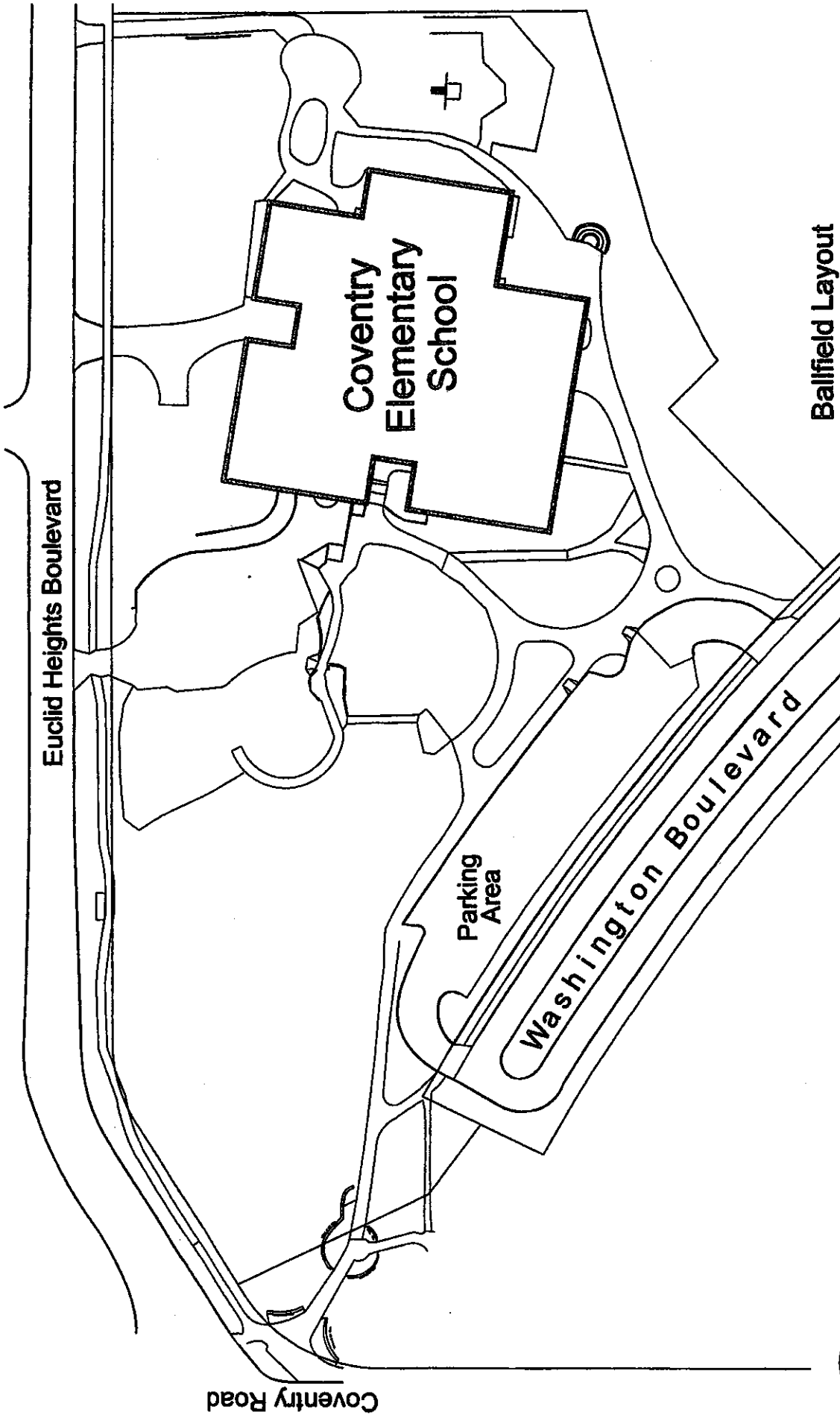
SECOND FLOOR PLAN



GROSS BUILDING AREA: 13,833 SF

Second Floor Plan
 Coventry School
 2843 Washington Blvd.
 Cleveland Heights, University Heights City School District
P.03
 DATE: 10/14/97



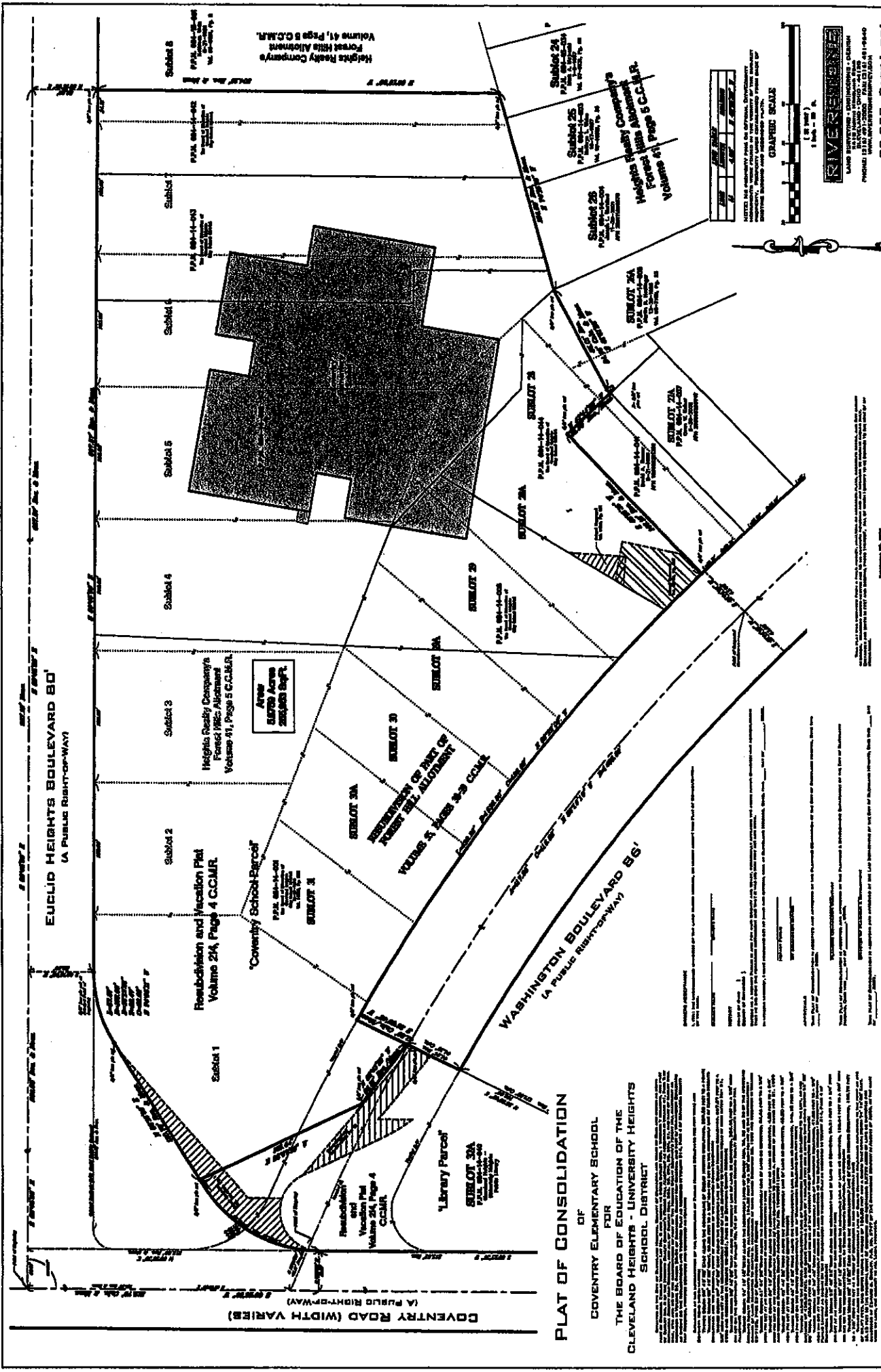


Ballfield Layout

Coventry Elementary

Washington & Euclid Heights Boulevards, Cleveland Heights, Ohio
Cleveland Heights / University Heights School District

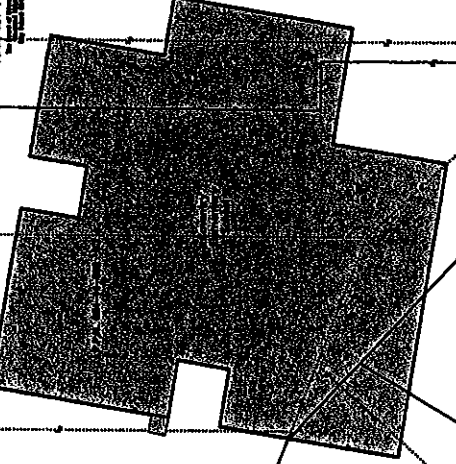




EUCLID HEIGHTS BOULEVARD B0
(A PUBLIC RIGHT-OF-WAY)

WASHINGTON BOULEVARD B6
(A PUBLIC RIGHT-OF-WAY)

COVENTRY ROAD (WIDTH VARIES)
(A PUBLIC RIGHT-OF-WAY)



Sublot 3
Heights Realty Company's
Forest Hills Alignment
Volume 41, Page 5 C.C.M.R.

Sublot 2
Recreation and Vacation Plat
Volume 24, Page 4 C.C.M.R.

Sublot 1
'Coventry School Parcel'
P.P.L. 88-14-01
P.P.L. 88-14-02
P.P.L. 88-14-03
P.P.L. 88-14-04
P.P.L. 88-14-05
P.P.L. 88-14-06
P.P.L. 88-14-07
P.P.L. 88-14-08
P.P.L. 88-14-09
P.P.L. 88-14-10
P.P.L. 88-14-11
P.P.L. 88-14-12
P.P.L. 88-14-13
P.P.L. 88-14-14
P.P.L. 88-14-15
P.P.L. 88-14-16
P.P.L. 88-14-17
P.P.L. 88-14-18
P.P.L. 88-14-19
P.P.L. 88-14-20
P.P.L. 88-14-21
P.P.L. 88-14-22
P.P.L. 88-14-23
P.P.L. 88-14-24
P.P.L. 88-14-25
P.P.L. 88-14-26
P.P.L. 88-14-27
P.P.L. 88-14-28
P.P.L. 88-14-29
P.P.L. 88-14-30
P.P.L. 88-14-31
P.P.L. 88-14-32
P.P.L. 88-14-33
P.P.L. 88-14-34
P.P.L. 88-14-35
P.P.L. 88-14-36
P.P.L. 88-14-37
P.P.L. 88-14-38
P.P.L. 88-14-39
P.P.L. 88-14-40
P.P.L. 88-14-41
P.P.L. 88-14-42
P.P.L. 88-14-43
P.P.L. 88-14-44
P.P.L. 88-14-45
P.P.L. 88-14-46
P.P.L. 88-14-47
P.P.L. 88-14-48
P.P.L. 88-14-49
P.P.L. 88-14-50
P.P.L. 88-14-51
P.P.L. 88-14-52
P.P.L. 88-14-53
P.P.L. 88-14-54
P.P.L. 88-14-55
P.P.L. 88-14-56
P.P.L. 88-14-57
P.P.L. 88-14-58
P.P.L. 88-14-59
P.P.L. 88-14-60
P.P.L. 88-14-61
P.P.L. 88-14-62
P.P.L. 88-14-63
P.P.L. 88-14-64
P.P.L. 88-14-65
P.P.L. 88-14-66
P.P.L. 88-14-67
P.P.L. 88-14-68
P.P.L. 88-14-69
P.P.L. 88-14-70
P.P.L. 88-14-71
P.P.L. 88-14-72
P.P.L. 88-14-73
P.P.L. 88-14-74
P.P.L. 88-14-75
P.P.L. 88-14-76
P.P.L. 88-14-77
P.P.L. 88-14-78
P.P.L. 88-14-79
P.P.L. 88-14-80
P.P.L. 88-14-81
P.P.L. 88-14-82
P.P.L. 88-14-83
P.P.L. 88-14-84
P.P.L. 88-14-85
P.P.L. 88-14-86
P.P.L. 88-14-87
P.P.L. 88-14-88
P.P.L. 88-14-89
P.P.L. 88-14-90
P.P.L. 88-14-91
P.P.L. 88-14-92
P.P.L. 88-14-93
P.P.L. 88-14-94
P.P.L. 88-14-95
P.P.L. 88-14-96
P.P.L. 88-14-97
P.P.L. 88-14-98
P.P.L. 88-14-99
P.P.L. 88-14-100

Sublot 4
Heights Realty Company's
Forest Hills Alignment
Volume 41, Page 5 C.C.M.R.

Sublot 5
Heights Realty Company's
Forest Hills Alignment
Volume 41, Page 5 C.C.M.R.

Sublot 6
Heights Realty Company's
Forest Hills Alignment
Volume 41, Page 5 C.C.M.R.

Sublot 7
Heights Realty Company's
Forest Hills Alignment
Volume 41, Page 5 C.C.M.R.

Sublot 8
Heights Realty Company's
Forest Hills Alignment
Volume 41, Page 5 C.C.M.R.

Sublot 9
Heights Realty Company's
Forest Hills Alignment
Volume 41, Page 5 C.C.M.R.

Sublot 10
Heights Realty Company's
Forest Hills Alignment
Volume 41, Page 5 C.C.M.R.

Sublot 11
Heights Realty Company's
Forest Hills Alignment
Volume 41, Page 5 C.C.M.R.

Sublot 12
Heights Realty Company's
Forest Hills Alignment
Volume 41, Page 5 C.C.M.R.

Sublot 13
Heights Realty Company's
Forest Hills Alignment
Volume 41, Page 5 C.C.M.R.

Sublot 14
Heights Realty Company's
Forest Hills Alignment
Volume 41, Page 5 C.C.M.R.

Sublot 15
Heights Realty Company's
Forest Hills Alignment
Volume 41, Page 5 C.C.M.R.

Sublot 16
Heights Realty Company's
Forest Hills Alignment
Volume 41, Page 5 C.C.M.R.

Sublot 17
Heights Realty Company's
Forest Hills Alignment
Volume 41, Page 5 C.C.M.R.

Sublot 18
Heights Realty Company's
Forest Hills Alignment
Volume 41, Page 5 C.C.M.R.

Sublot 19
Heights Realty Company's
Forest Hills Alignment
Volume 41, Page 5 C.C.M.R.

Sublot 20
Heights Realty Company's
Forest Hills Alignment
Volume 41, Page 5 C.C.M.R.

Sublot 21
Heights Realty Company's
Forest Hills Alignment
Volume 41, Page 5 C.C.M.R.

Sublot 22
Heights Realty Company's
Forest Hills Alignment
Volume 41, Page 5 C.C.M.R.

Sublot 23
Heights Realty Company's
Forest Hills Alignment
Volume 41, Page 5 C.C.M.R.

Sublot 24
Heights Realty Company's
Forest Hills Alignment
Volume 41, Page 5 C.C.M.R.

Sublot 25
Heights Realty Company's
Forest Hills Alignment
Volume 41, Page 5 C.C.M.R.

Sublot 26
Heights Realty Company's
Forest Hills Alignment
Volume 41, Page 5 C.C.M.R.

Sublot 27
Heights Realty Company's
Forest Hills Alignment
Volume 41, Page 5 C.C.M.R.

Sublot 28
Heights Realty Company's
Forest Hills Alignment
Volume 41, Page 5 C.C.M.R.

PLAT OF CONSOLIDATION
OF
COVENTRY ELEMENTARY SCHOOL
FOR
THE BOARD OF EDUCATION OF THE
CLEVELAND HEIGHTS - UNIVERSITY HEIGHTS
SCHOOL DISTRICT

THIS PLAT OF CONSOLIDATION OF THE COVENTRY ELEMENTARY SCHOOL FOR THE BOARD OF EDUCATION OF THE CLEVELAND HEIGHTS - UNIVERSITY HEIGHTS SCHOOL DISTRICT, IS A PART OF THE PLAT OF CONSOLIDATION OF THE COVENTRY ELEMENTARY SCHOOL FOR THE BOARD OF EDUCATION OF THE CLEVELAND HEIGHTS - UNIVERSITY HEIGHTS SCHOOL DISTRICT, AS SHOWN ON THE PLAT OF CONSOLIDATION OF THE COVENTRY ELEMENTARY SCHOOL FOR THE BOARD OF EDUCATION OF THE CLEVELAND HEIGHTS - UNIVERSITY HEIGHTS SCHOOL DISTRICT, DATED AND RECORDED IN VOLUME 41, PAGE 5 OF THE C.C.M.R. RECORDS OF THE CLEVELAND HEIGHTS - UNIVERSITY HEIGHTS SCHOOL DISTRICT.

NOTED: THIS PLAT OF CONSOLIDATION OF THE COVENTRY ELEMENTARY SCHOOL FOR THE BOARD OF EDUCATION OF THE CLEVELAND HEIGHTS - UNIVERSITY HEIGHTS SCHOOL DISTRICT, IS A PART OF THE PLAT OF CONSOLIDATION OF THE COVENTRY ELEMENTARY SCHOOL FOR THE BOARD OF EDUCATION OF THE CLEVELAND HEIGHTS - UNIVERSITY HEIGHTS SCHOOL DISTRICT, AS SHOWN ON THE PLAT OF CONSOLIDATION OF THE COVENTRY ELEMENTARY SCHOOL FOR THE BOARD OF EDUCATION OF THE CLEVELAND HEIGHTS - UNIVERSITY HEIGHTS SCHOOL DISTRICT, DATED AND RECORDED IN VOLUME 41, PAGE 5 OF THE C.C.M.R. RECORDS OF THE CLEVELAND HEIGHTS - UNIVERSITY HEIGHTS SCHOOL DISTRICT.

GRAPHIC SCALE
1 inch = 20 feet

1	20	40	60	80	100
20	40	60	80	100	120
40	60	80	100	120	140
60	80	100	120	140	160
80	100	120	140	160	180
100	120	140	160	180	200

RIVERVIEW
LAND SURVEYING & ENGINEERING & CARTING
10000 RIVERVIEW BLVD., SUITE 100
CLEVELAND, OHIO 44130
PHONE: (216) 291-1000
FAX: (216) 291-1001
WWW.RIVERVIEW-SURVEYING.COM

NS-333-R, PART 1 OF 1