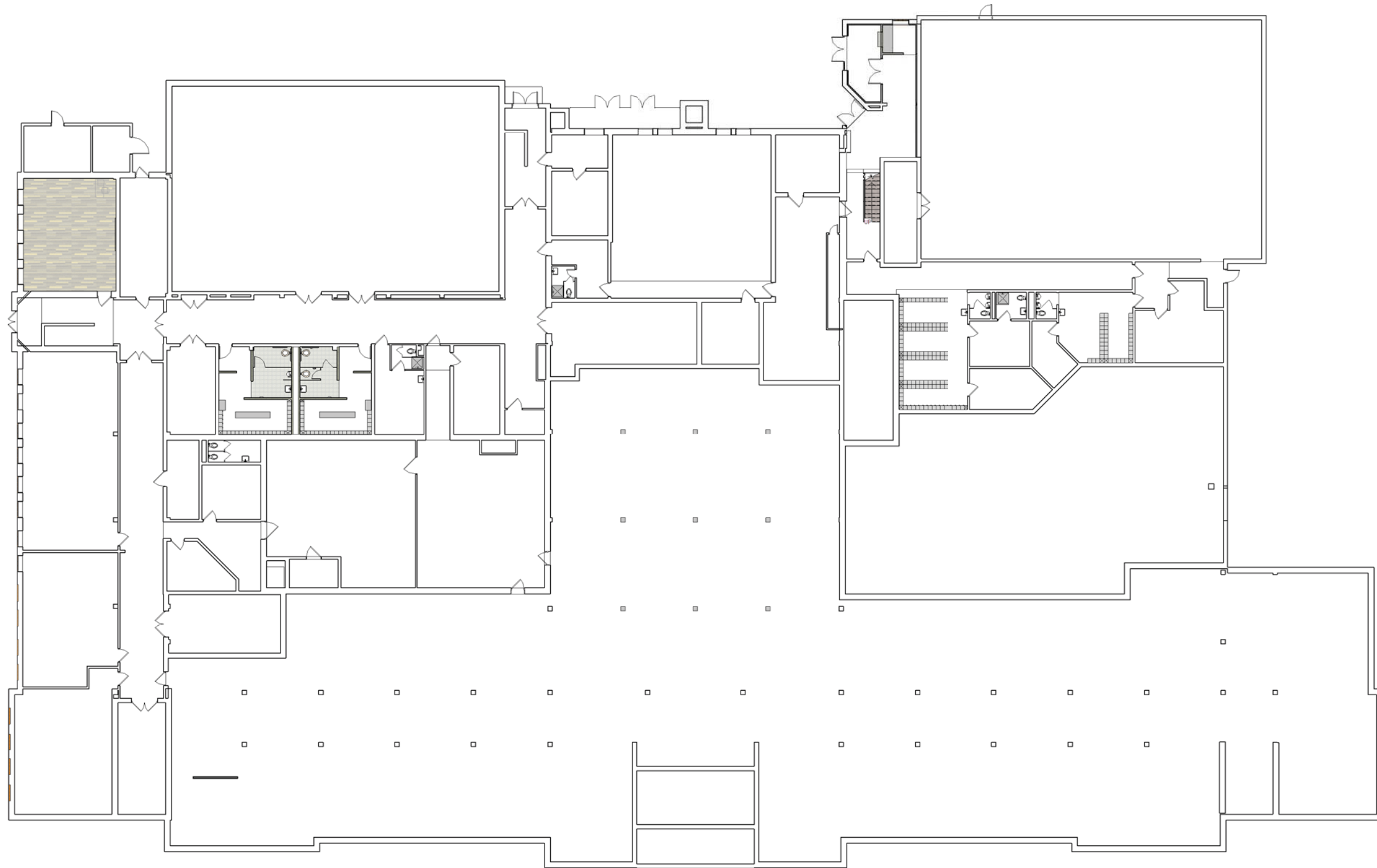


CLEVELAND HEIGHTS | UNIVERSITY
HEIGHTS CITY SCHOOL DISTRICT
MONTICELLO & ROXBORO MIDDLE SCHOOLS
INTERIOR DESIGN

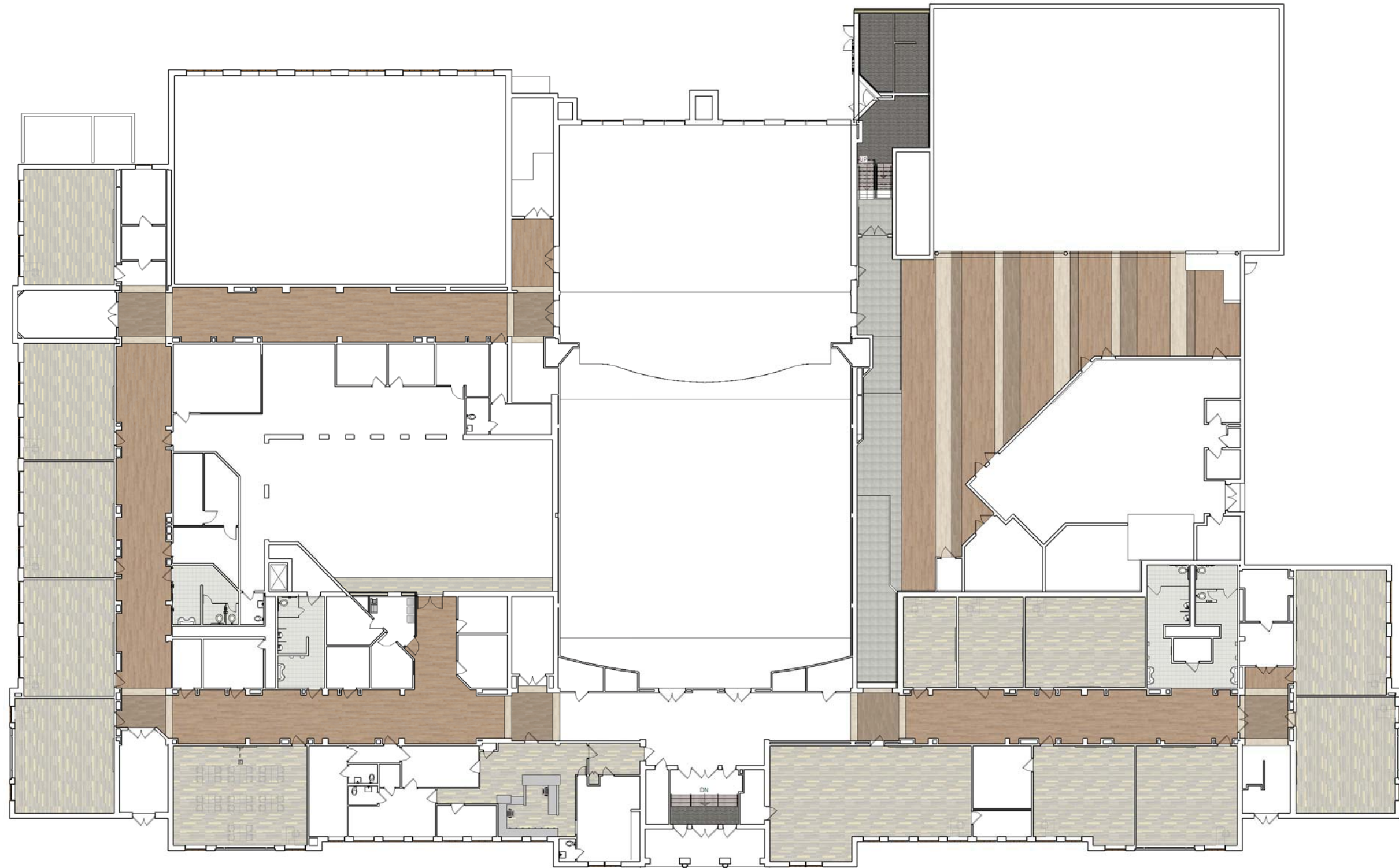
04.13.2017



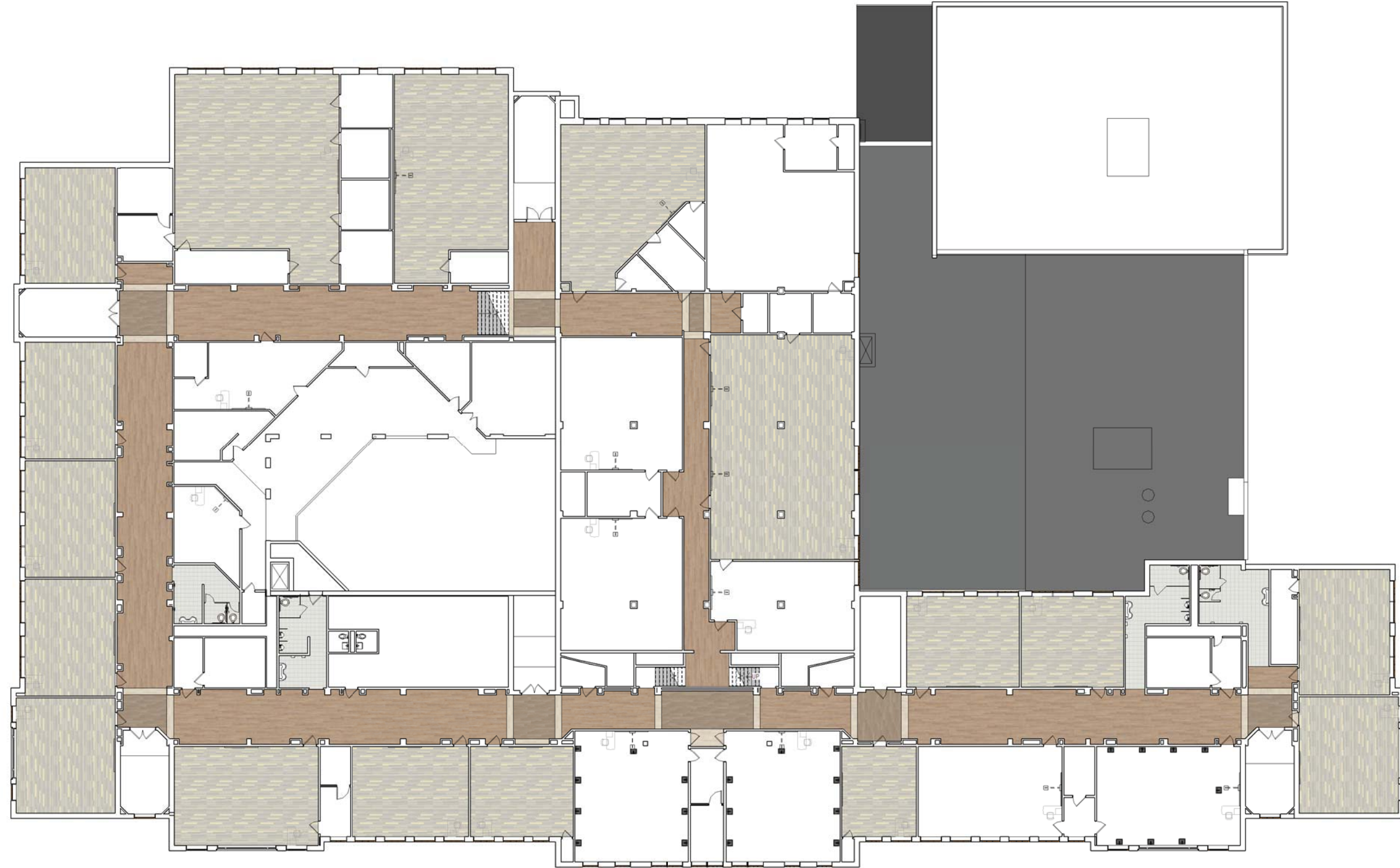




LOWER LEVEL



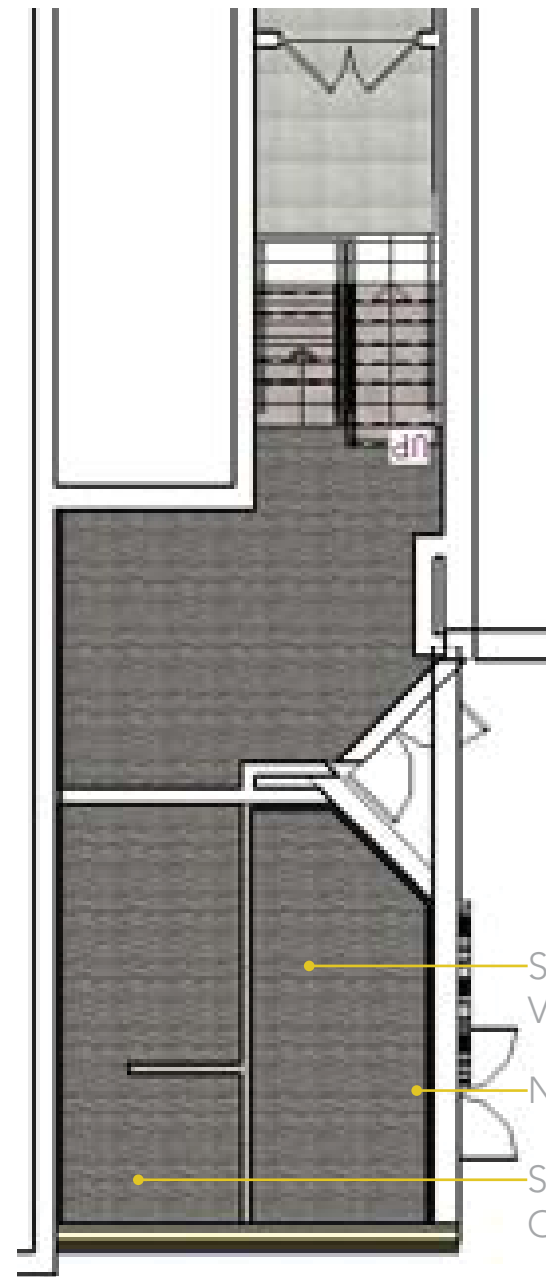
FIRST FLOOR



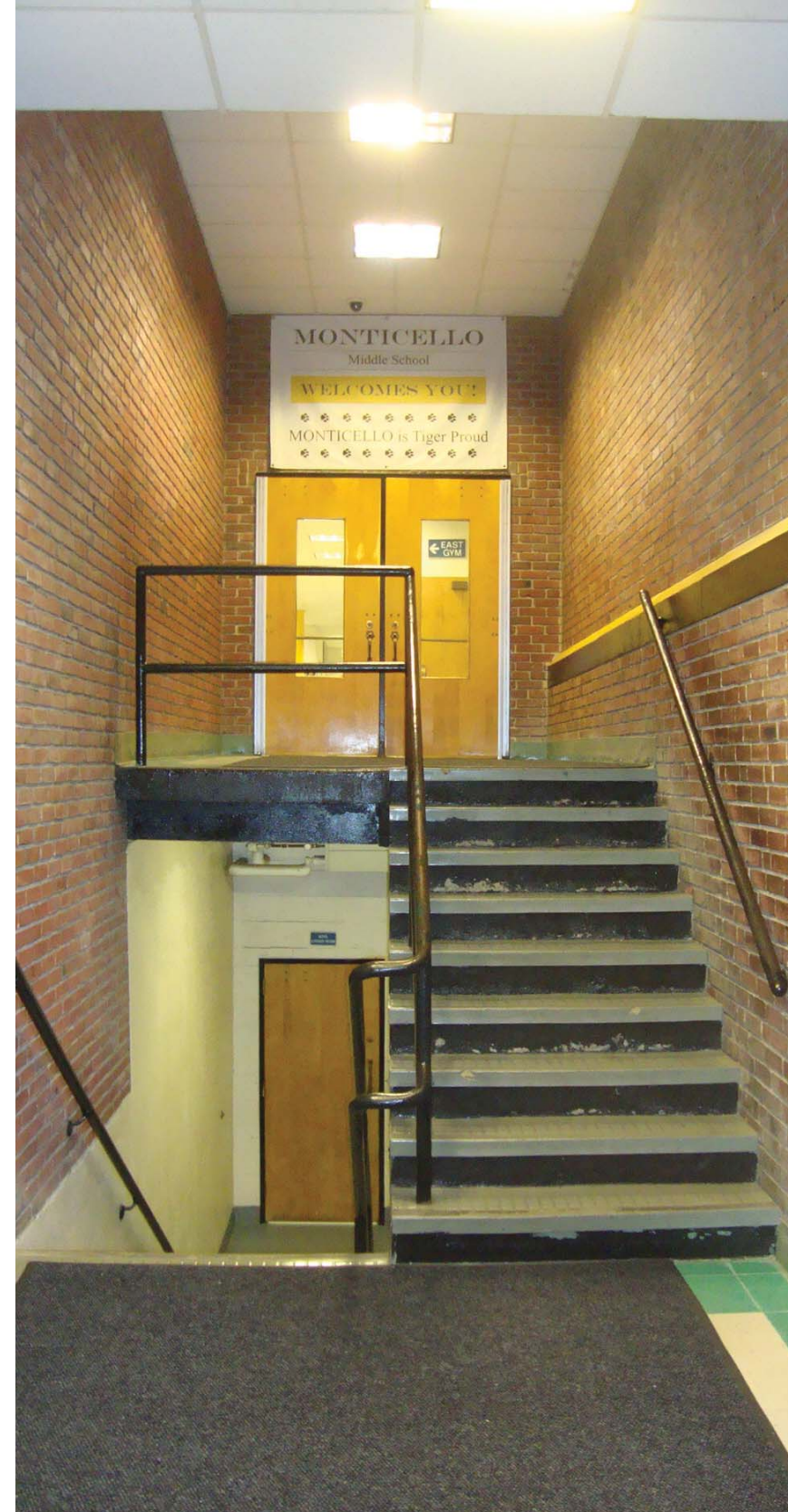
SECOND FLOOR



NEW LIGHT FIXTURE



PLAN



EXISTING

NEW ACOUSTICAL CEILING

NEW LIGHT FIXTURES

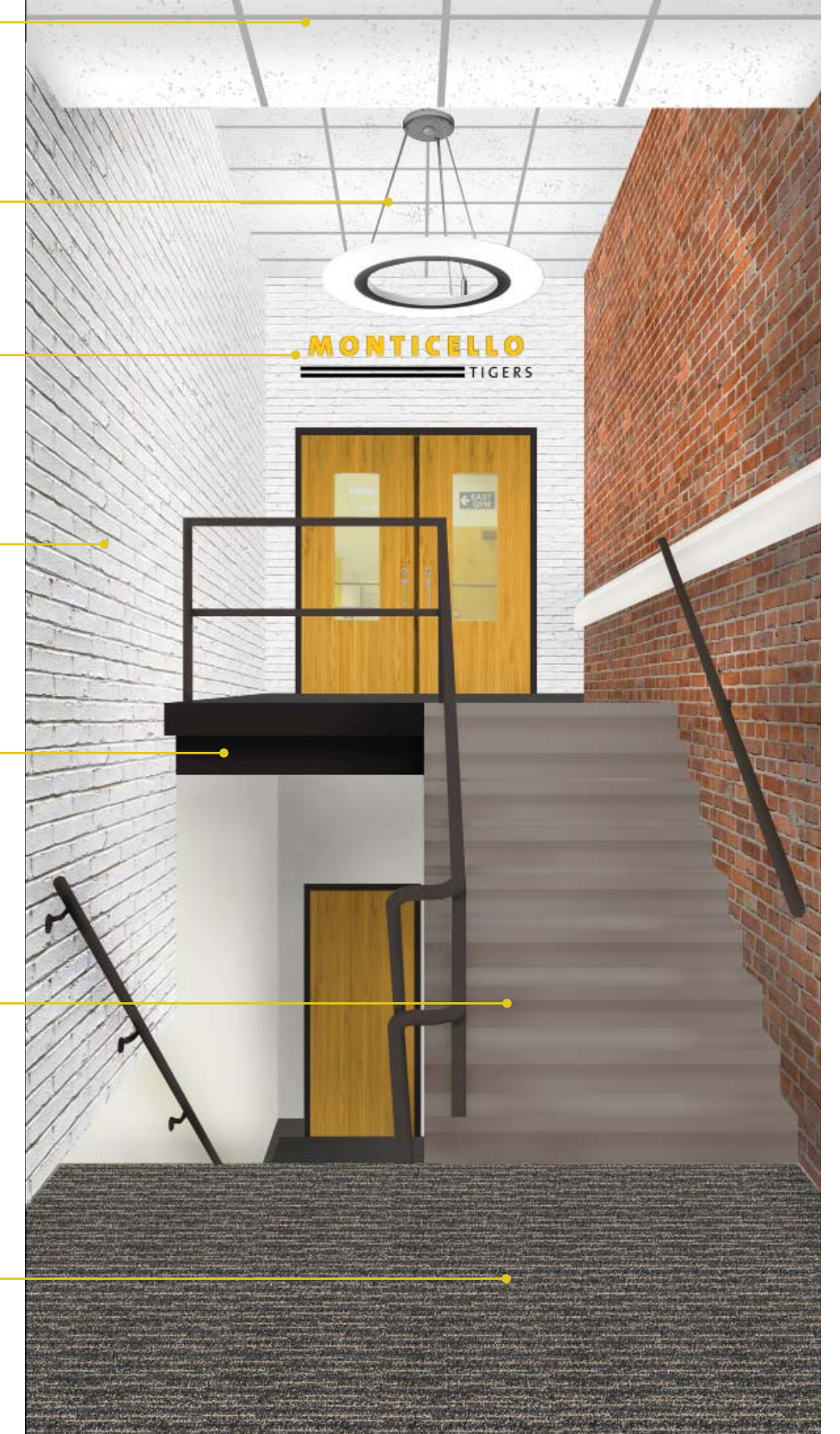
NEW INTERIOR SIGNAGE

NEW PAINT ON BRICK

NEW PAINT ON STAIR STRINGER & RAILING

NEW RUBBER STAIR TREADS & RISERS

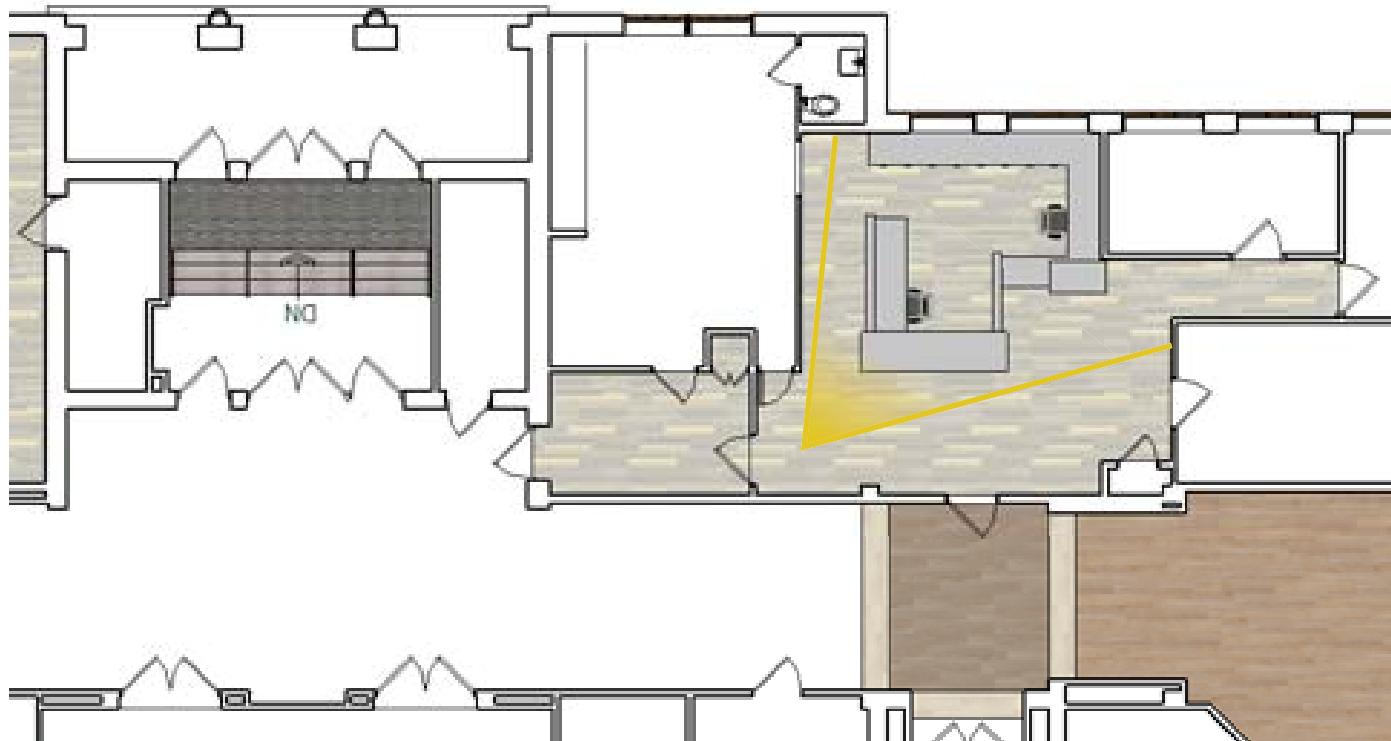
NEW ENTRANCE WALK-OFF CARPET



PROPOSED DESIGN



EXISTING



PLAN

NEW ACOUSTICAL
CEILING

NEW LIGHT FIXTURES

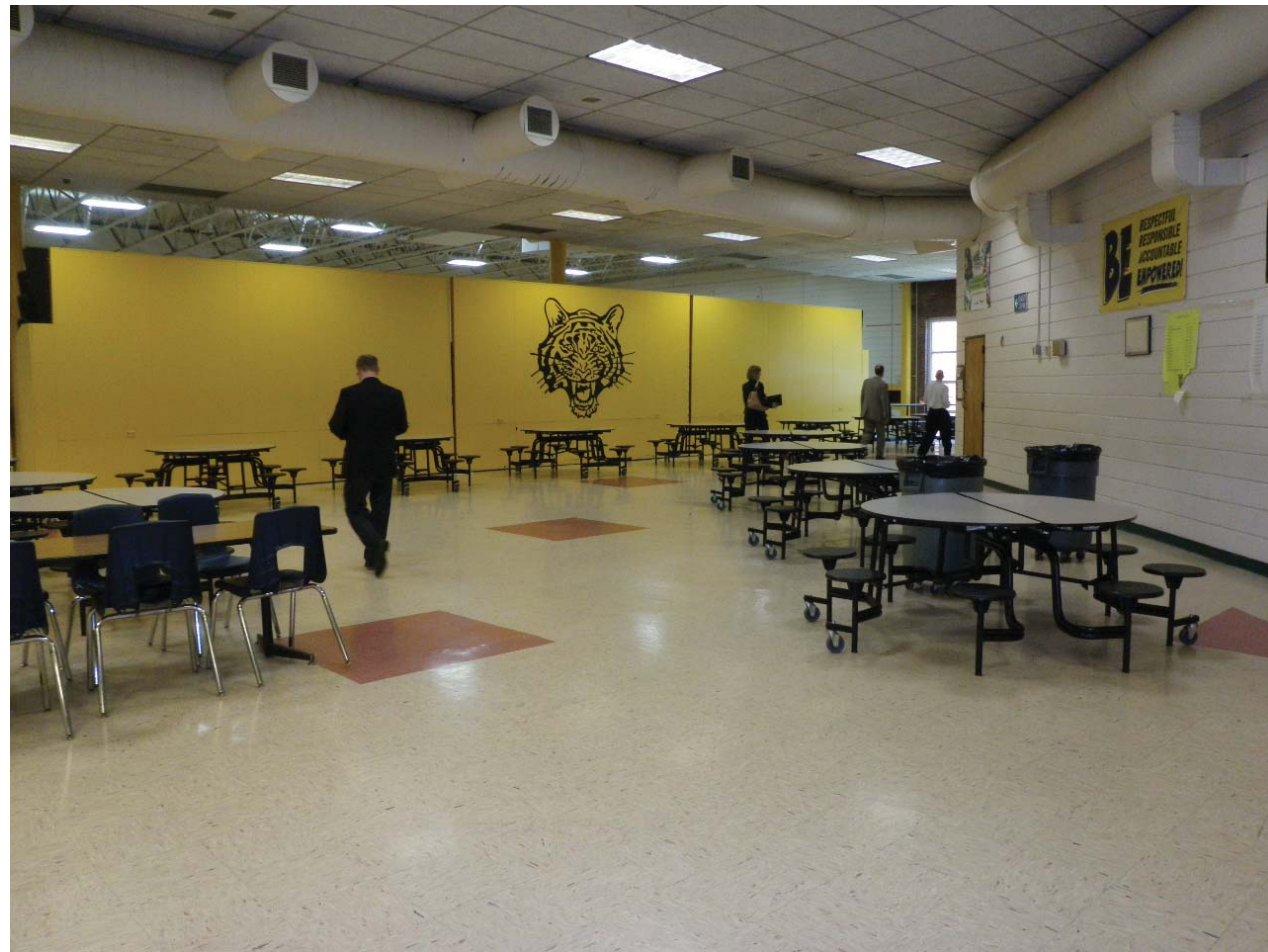
NEW SIGNAGE

NEW RECEPTION
DESK

NEW CARPET



PROPOSED DESIGN

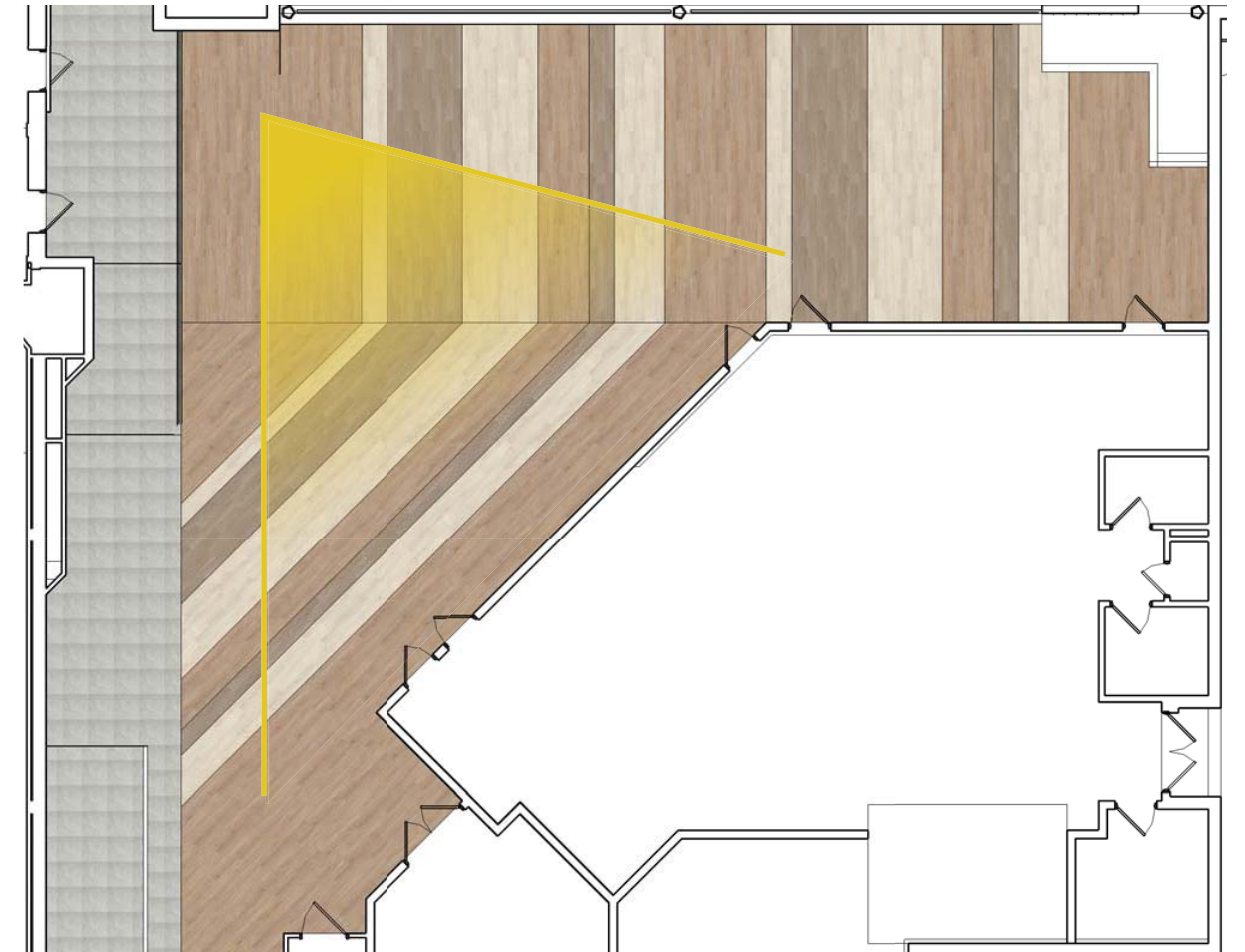


EXISTING

- NEW ACOUSTICAL CEILING
- NEW INTERIOR SIGNAGE
- NEW LIGHT FIXTURES
- NEW PAINT ON BRICK
- NEW VINYL TILE



LIGHT FIXTURE



PLAN

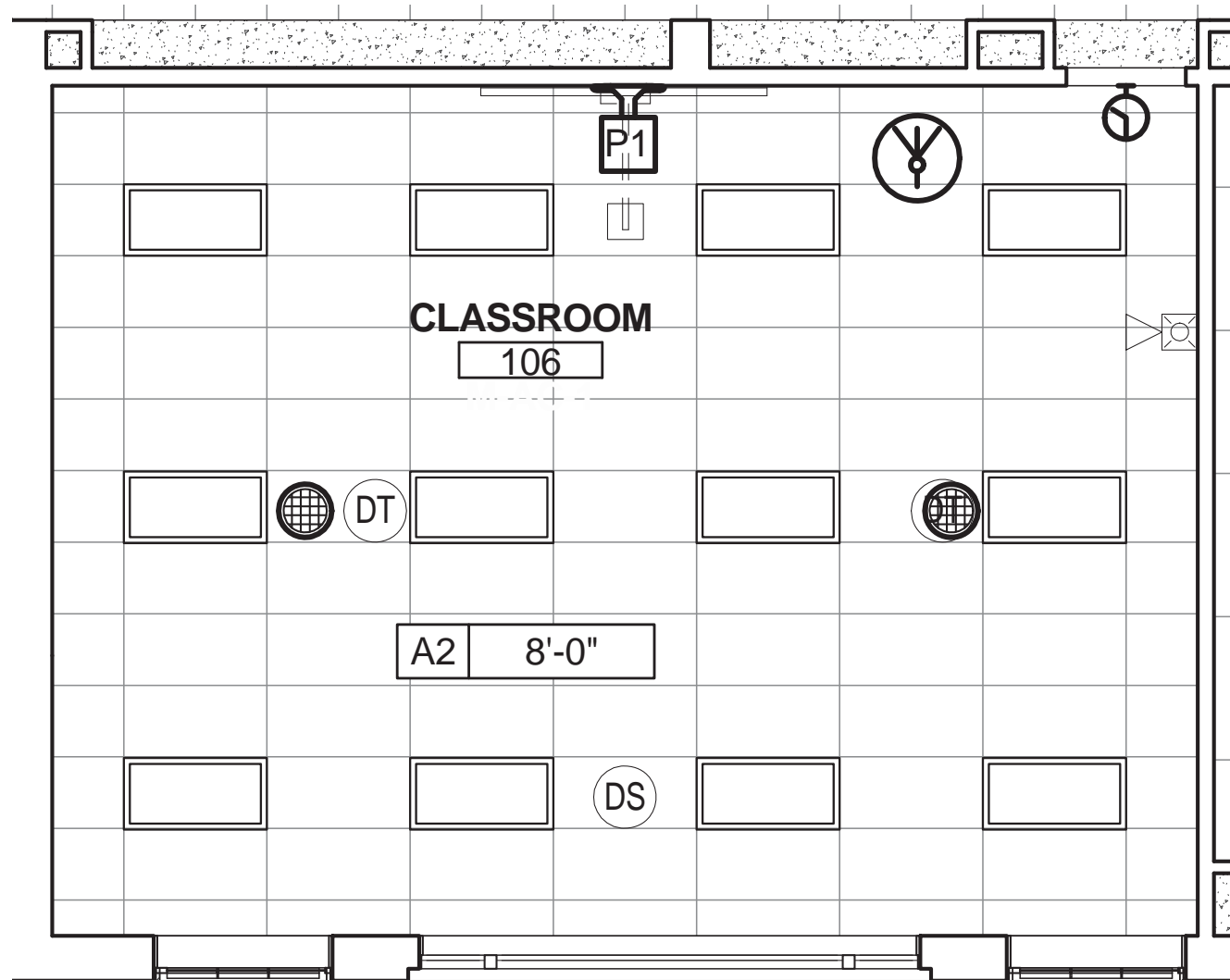


PROPOSED WALL GRAPHIC

ACOUSTICAL WALL PANELS

ACRYLIC SIGN

PAINTED WALL GRAPHICS



REFLECTED CEILING PLAN

FINISHES & EQUIPMENT

- NEW CARPET TILE
- NEW ACOUSTICAL CEILING TILE
- NEW MARKER BOARD FOR PROJECTOR
- NEW PAINT ON WALLS

TECHNOLOGY

- NEW WALL MOUNTED SHORT THROW PROJECTOR
- NEW WIRELESS ACCESS POINT
- NEW CEILING MOUNTED PAGING SPEAKERS
- NEW PAGING CALL BUTTON
- NEW CLOCK
- NEW VOICE/DATA FACEPLATES
- NEW A/V FACEPLATE FOR HOOK UPS TO PROJECTOR

LIGHTING

- NEW 2'X4' RECESSED LED FIXTURES
- NEW TECHNOLOGY OCCUPANCY SENSORS
- NEW LOW VOLTAGE DIMMER SWITCH WITH TWO ZONES
 - ZONE "A" CONTROLS TEACHING WALL
 - ZONE "B" CONTROLS REST OF LIGHTING
- NEW DAYLIGHT SENSOR BY THE WINDOWS
- ENERGY CODE REQUIREMENT FOR AUTOMATIC DAY LIGHTING CONTROL

HVAC

- NEW CO2 SENSOR INTERLOCKED WITH VAV SHUT OFF BOX
- NEW WALL THERMOSTAT INTERLOCKED WITH INDIVIDUAL CLASSROOM WSHP
- NEW VAV SHUT OFF BOX (ABOVE CEILING FOR NEUTRAL OA FROM THE DOAS)
- NEW SUPPLY DIFFUSERS & RETURN GRILLES DUCTED TO/FROM THE INDIVIDUAL CLASSROOM WSHP
- NEW EXHAUST GRILLE BACK TO DOAS

POWER

- NEW GENERAL PURPOSE DUPLEX RECEPTACLES (4)
- NEW DUPLEX RECEPTACLE FOR PROJECTOR (1)
- NEW QUAD RECEPTACLE AT TEACHER LOCATION (1)

FIRE ALARM

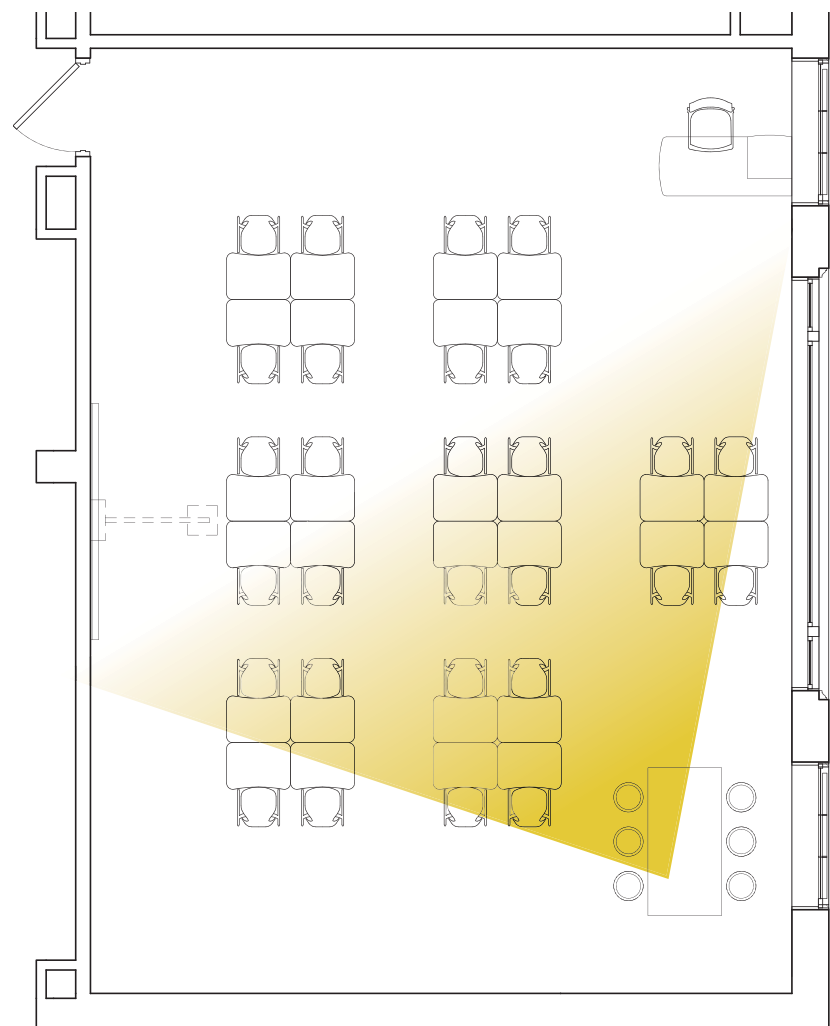
- NEW FIRE ALARM SPEAKER STROBE

ALTERNATES

- NEW TELEPHONE HANDSET
- NEW SOUND REINFORCEMENT SYSTEM
 - INCLUDES SPEAKERS, AMPLIFIER MICROPHONES
- NEW QUAD RECEPTACLE FOR SOUND REINFORCEMENT LOCATED AT TEACHER DESK

ALL EXISTING VISUAL DISPLAY BOARDS ON THE PROJECTOR WALL WILL BE REMOVED. A NEW 8 FEET WIDE MARKER BOARD WILL BE PROVIDED TO PROJECT UPON.

THE RENDERING ILLUSTRATES NEW FINISHES AND EQUIPMENT. THE FURNITURE IS NOT IN CONTRACT. THE EXISTING VISUAL DISPLAY BOARDS ARE NOT SHOWN.

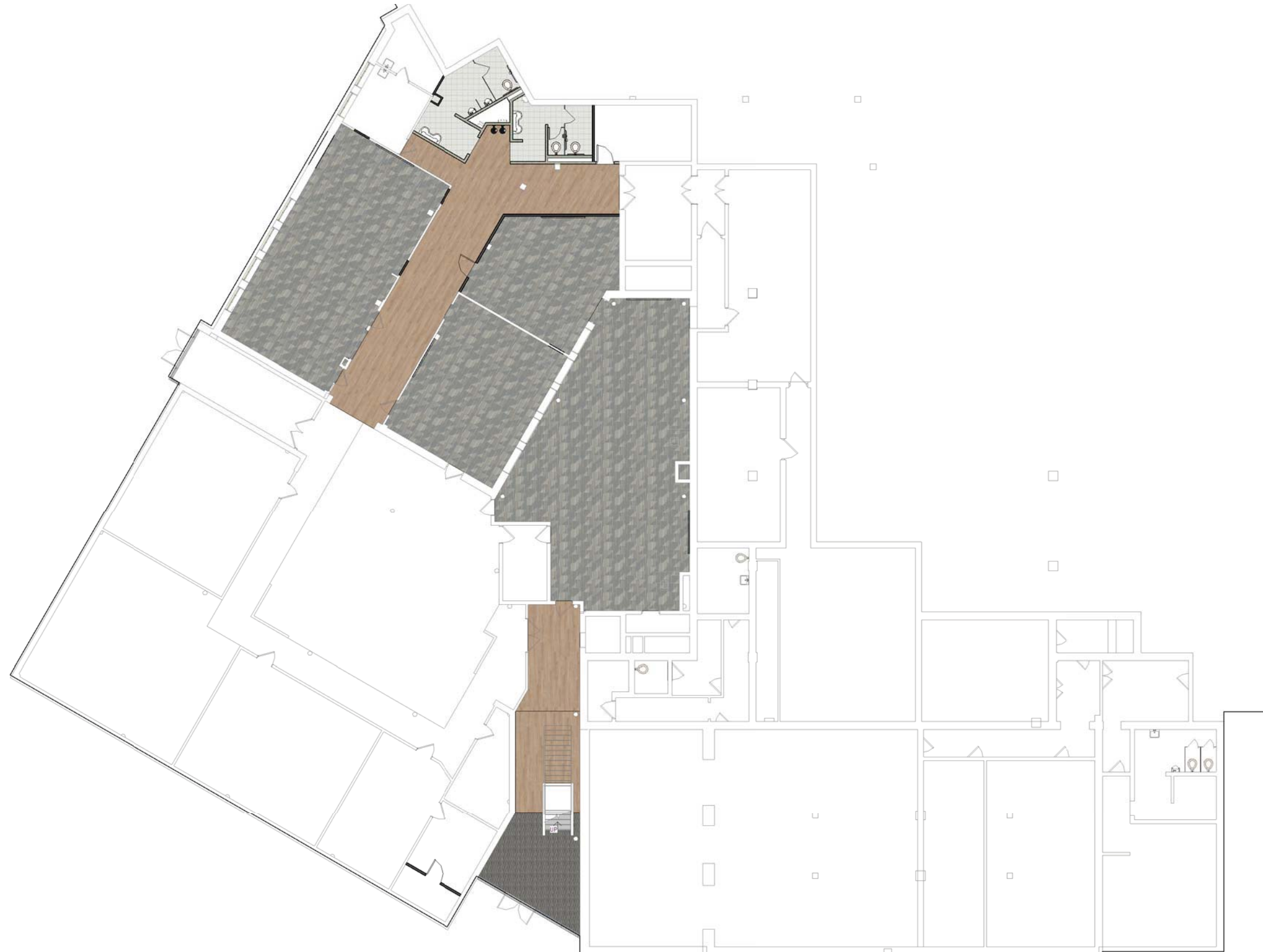


PLAN

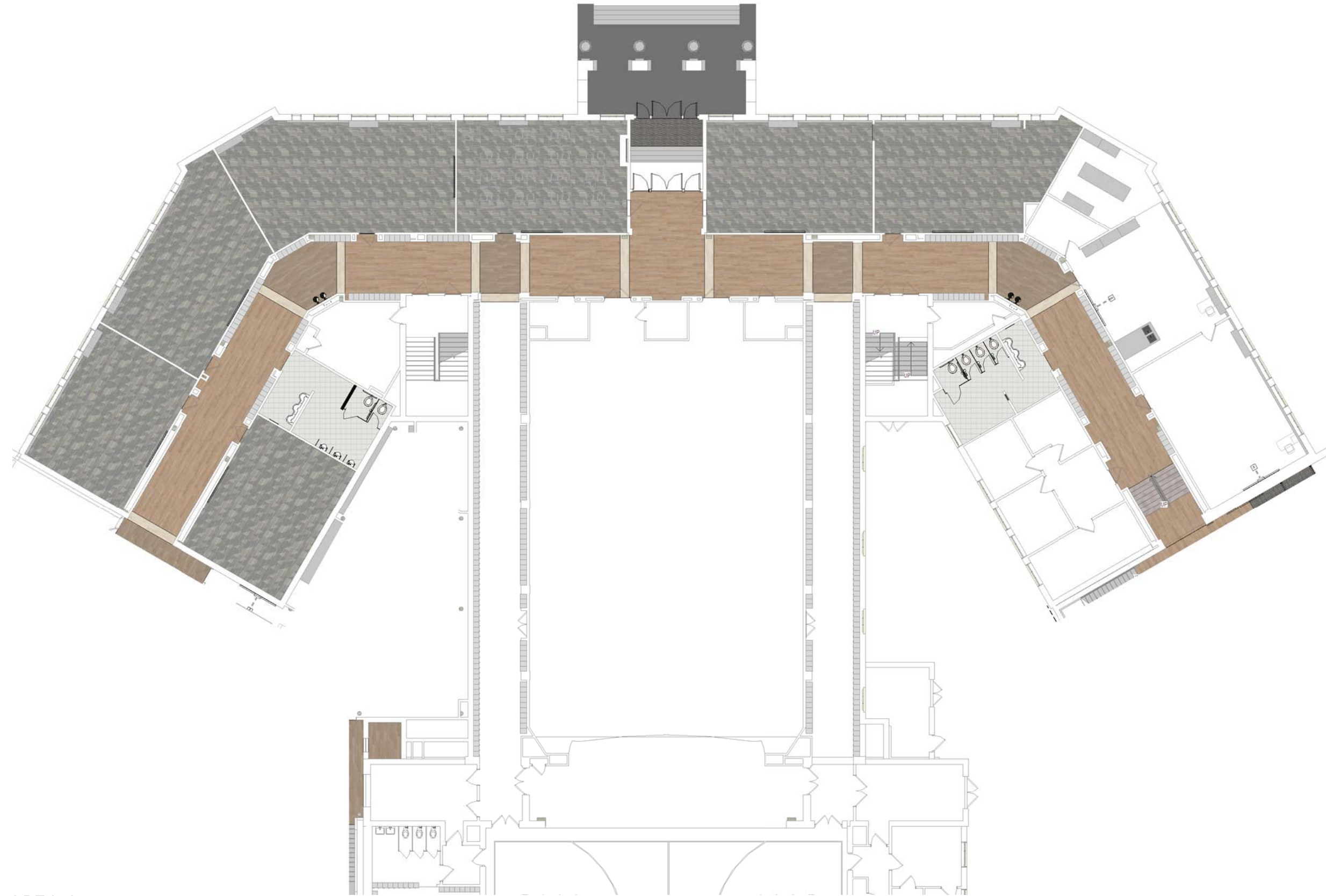


PROPOSED DESIGN

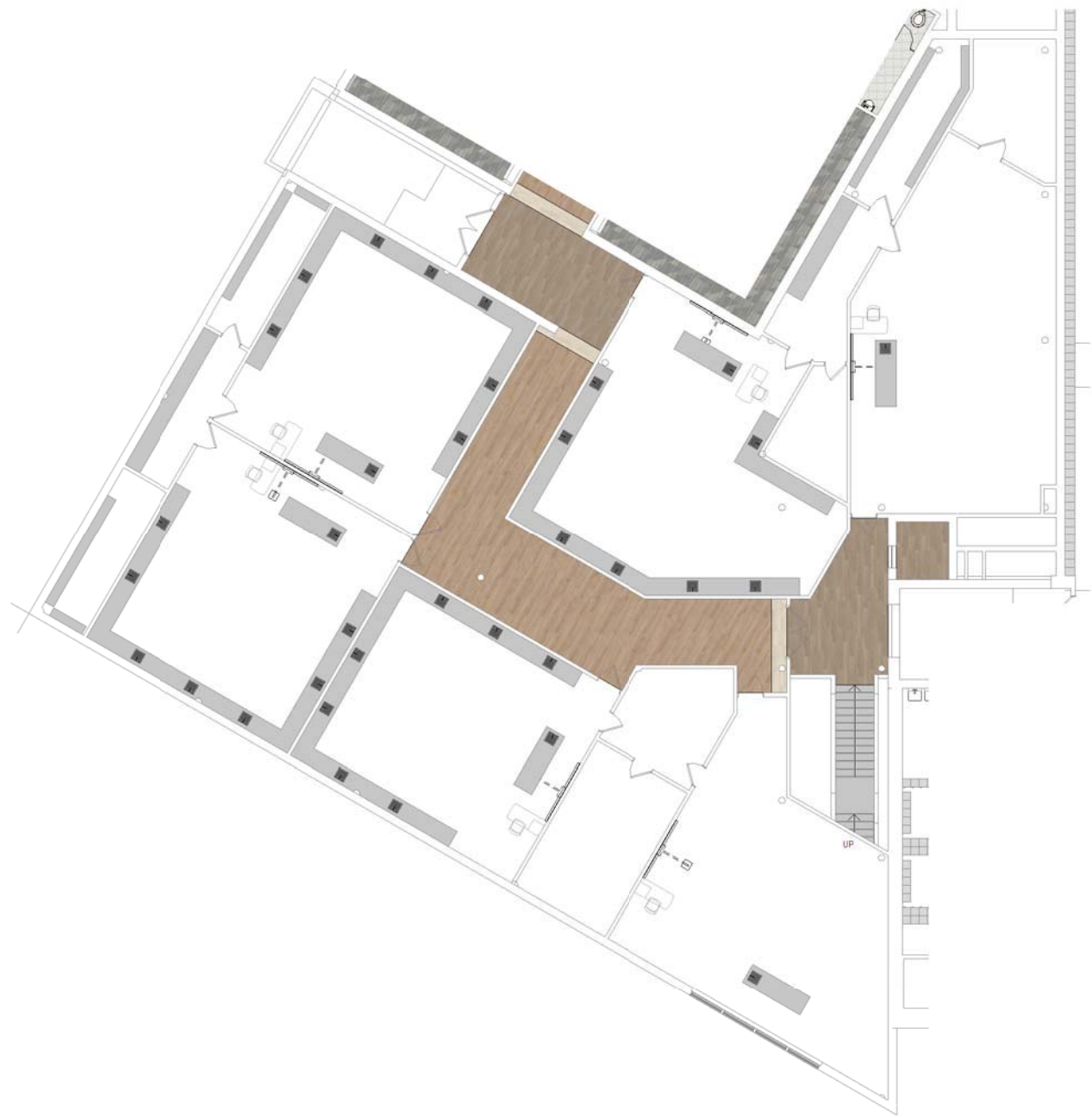




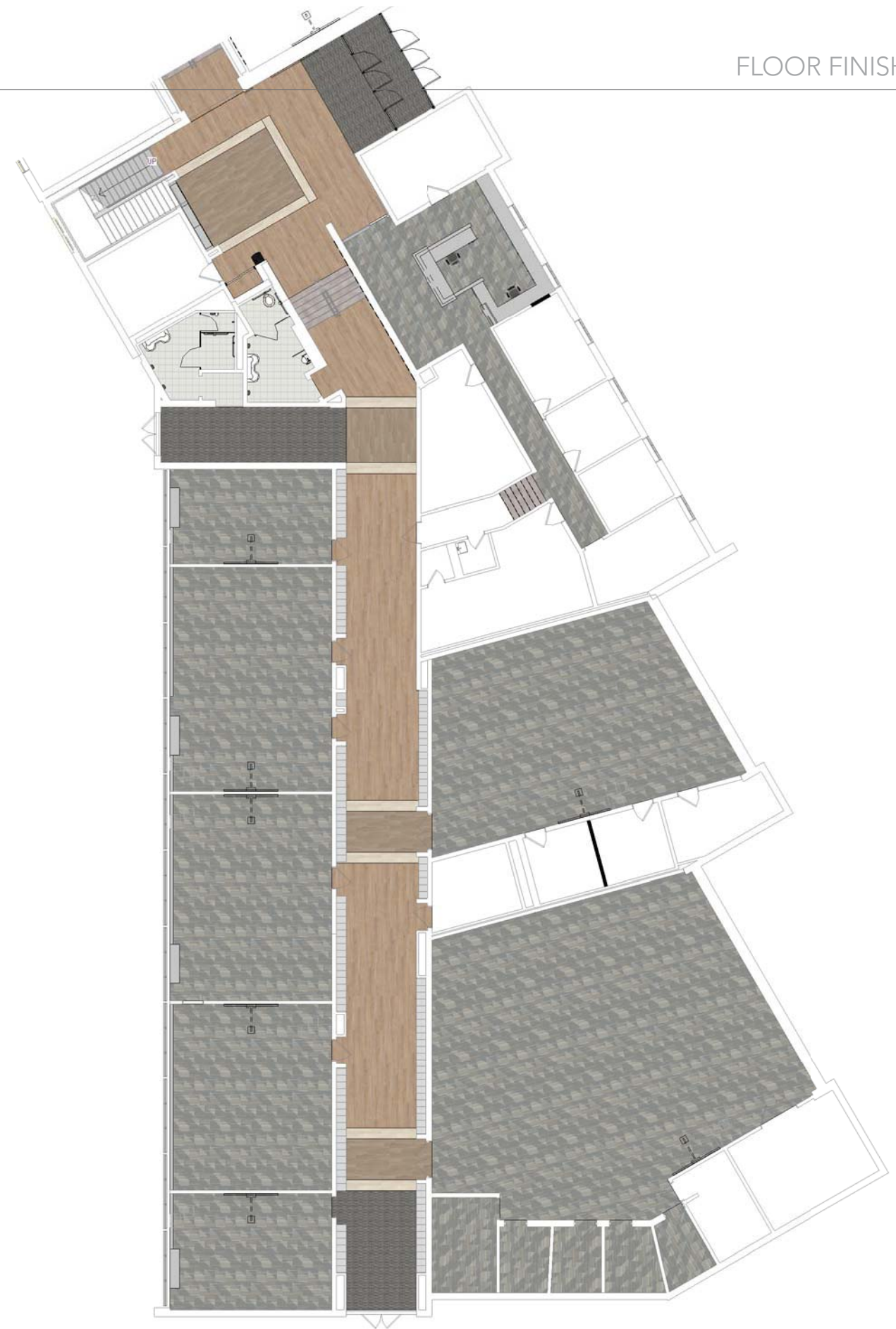
LOWER LEVEL

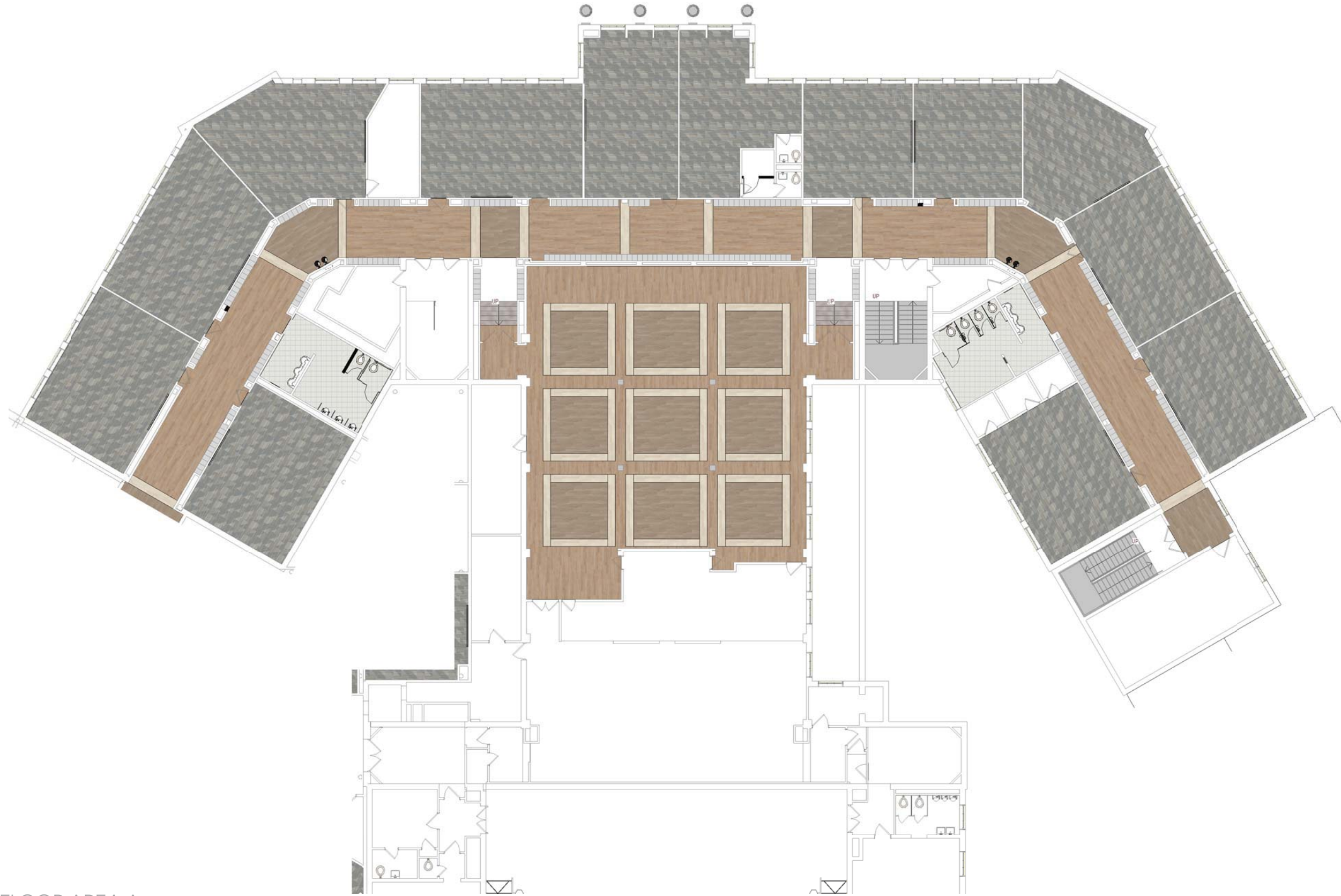


FIRST FLOOR AREA A

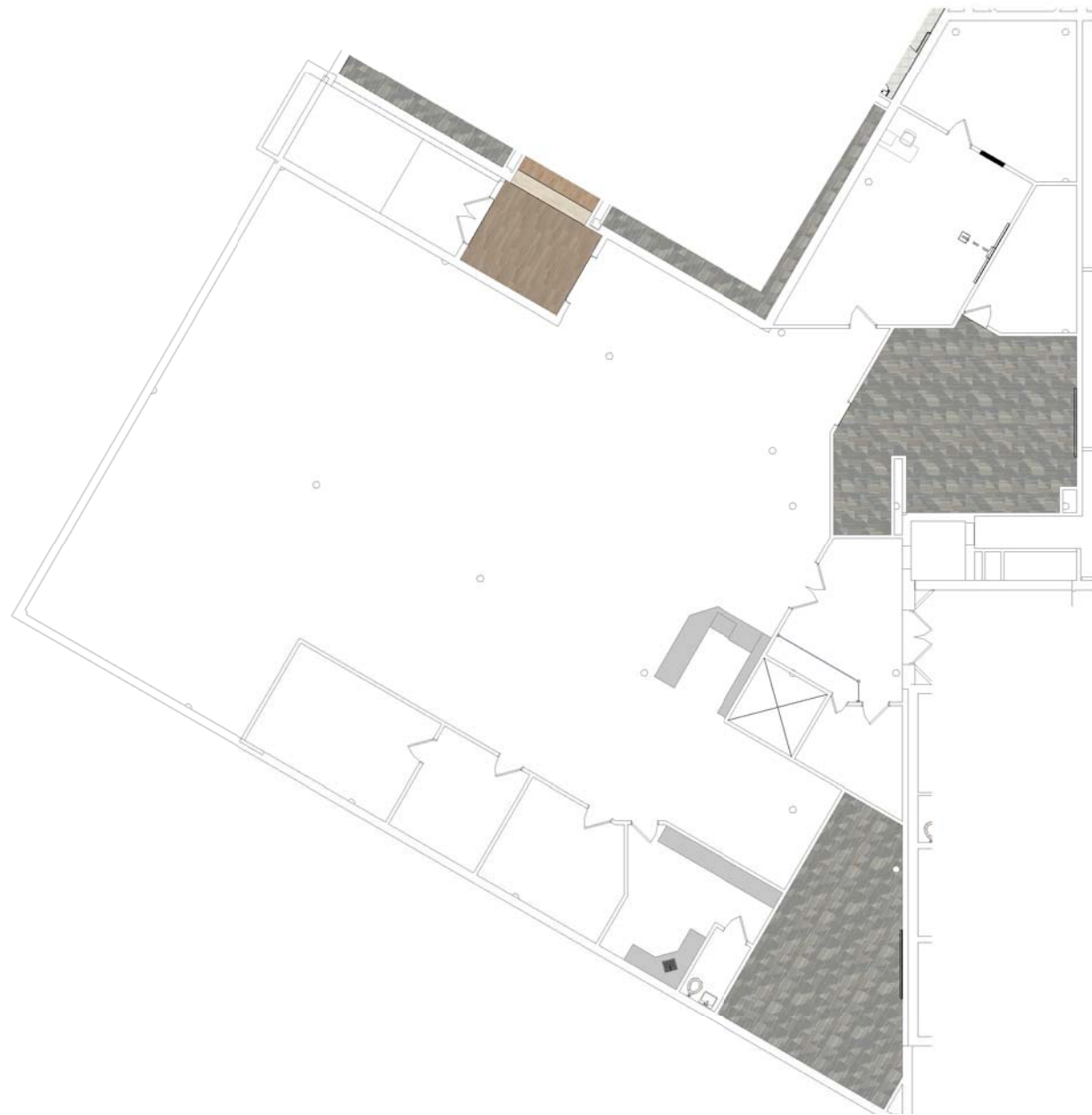


FIRST FLOOR AREA B & C

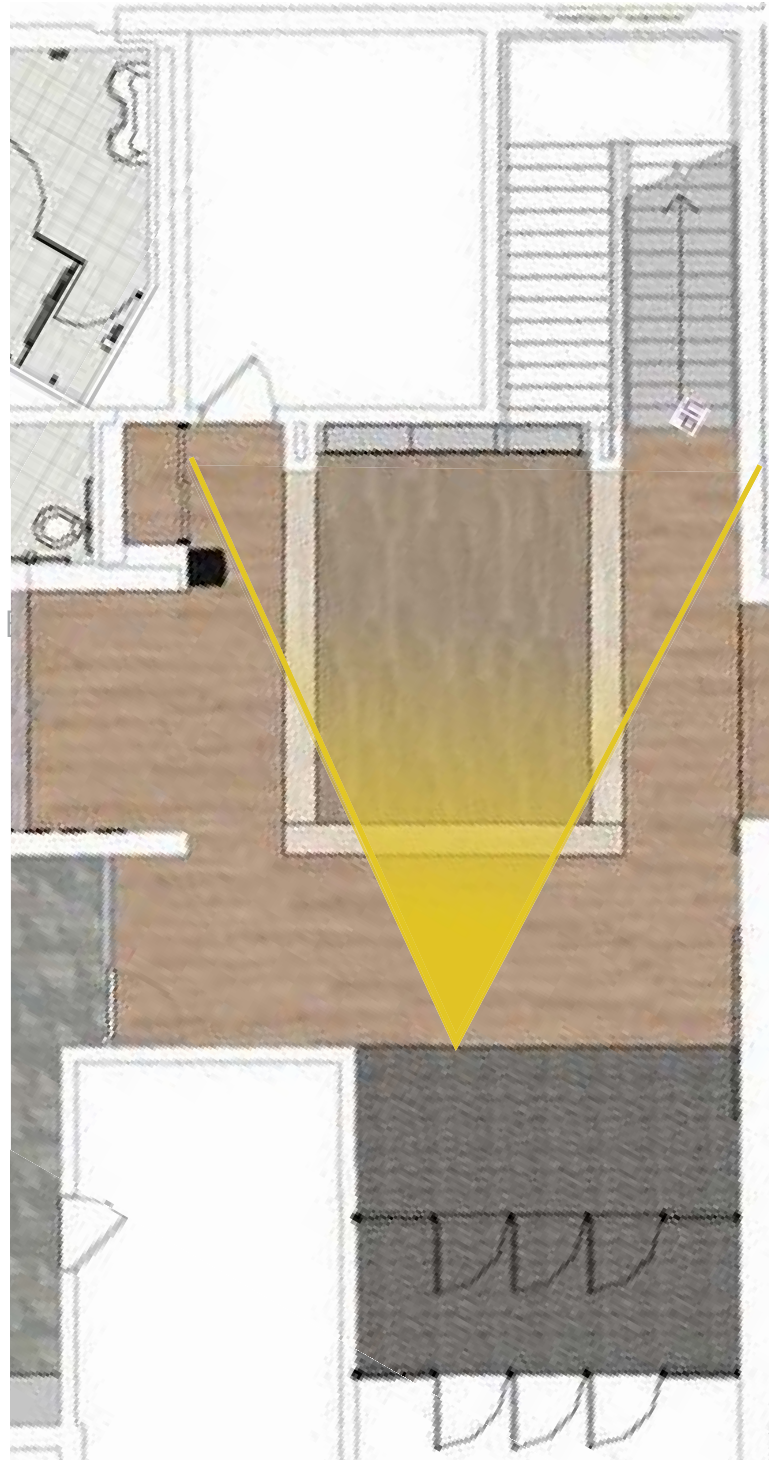




SECOND FLOOR AREA A



SECOND FLOOR AREA B



PLAN

NEW ACOUSTICAL CEILING

NEW LIGHT FIXTURES

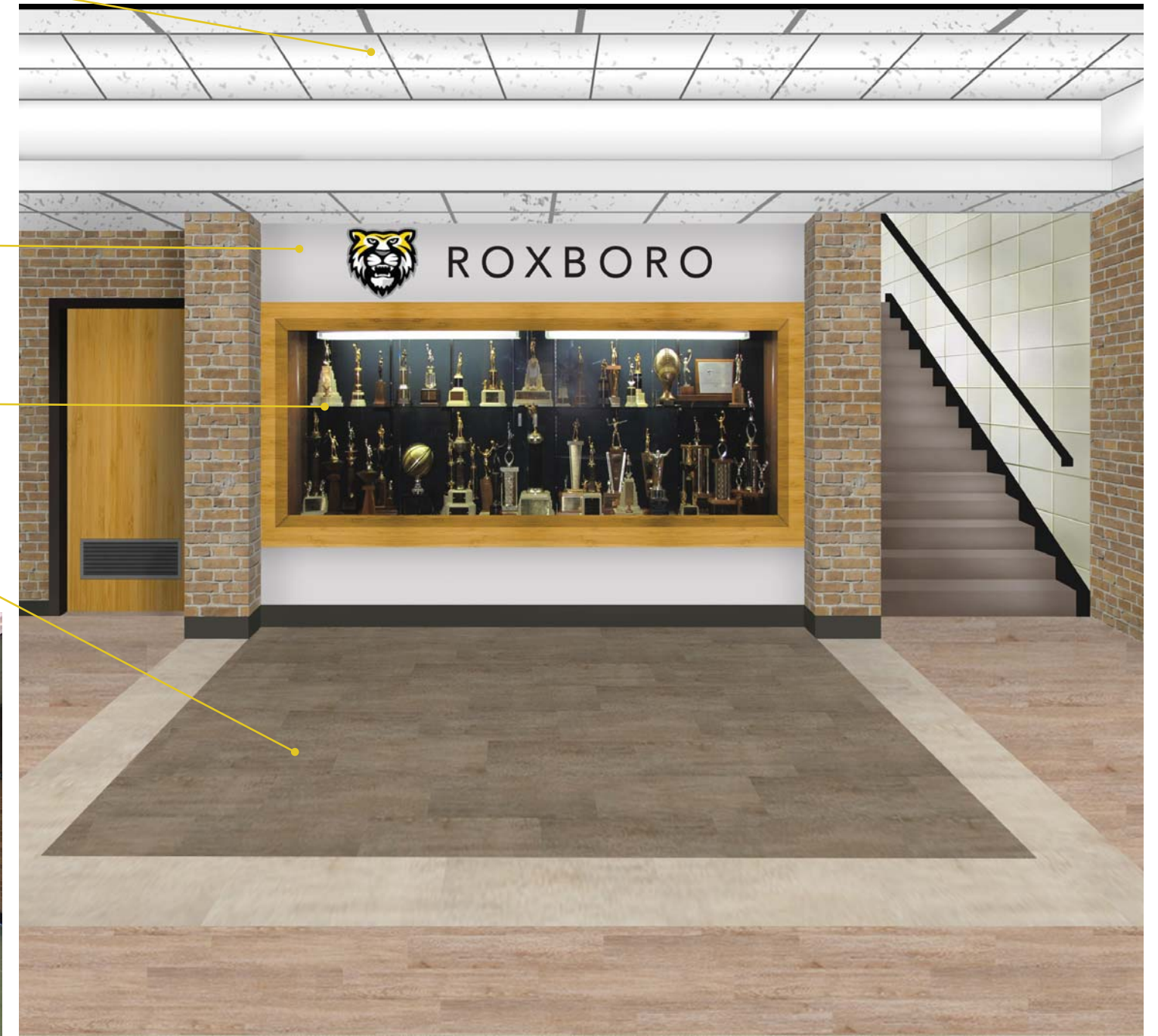
NEW INTERIOR SIGNAGE

NEW DISPLAY CASE

NEW VINYL TILE



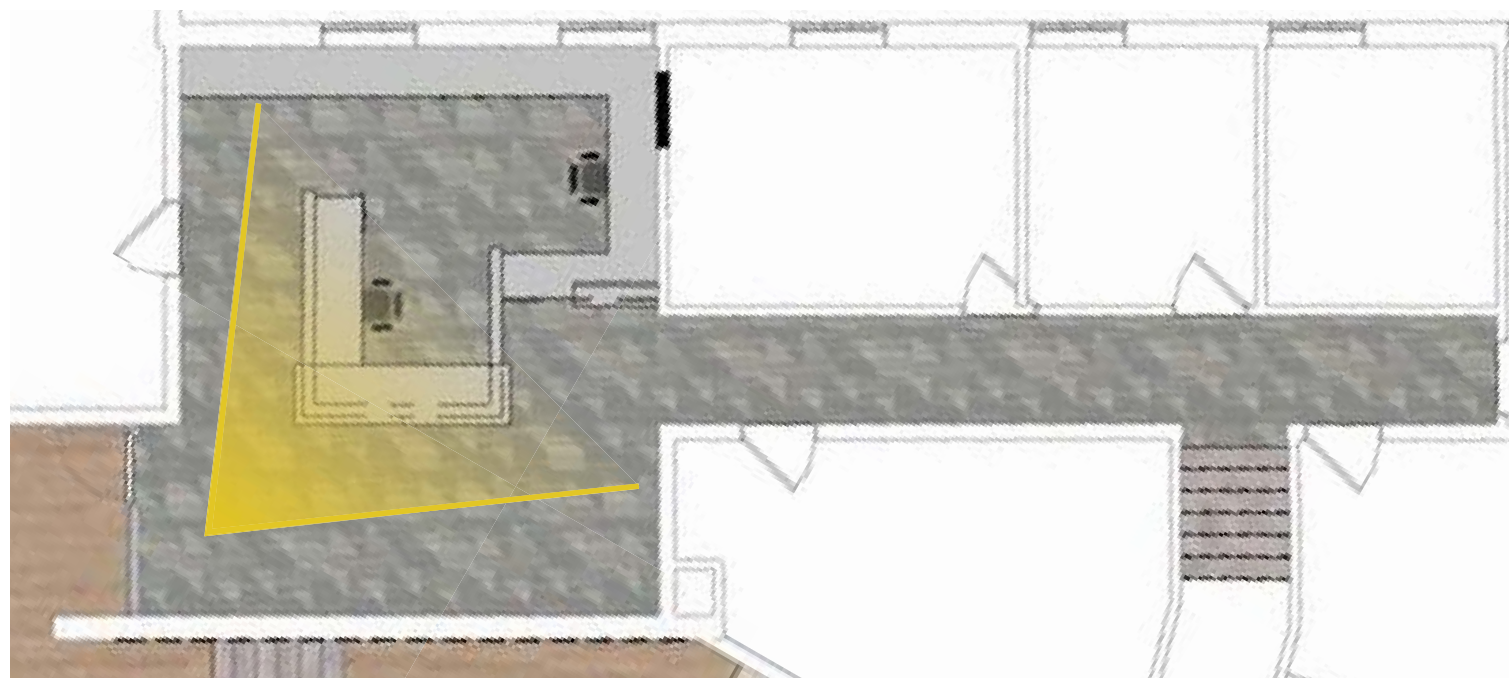
EXISTING



PROPOSED



EXISTING



PLAN

NEW ACOUSTICAL
CEILING

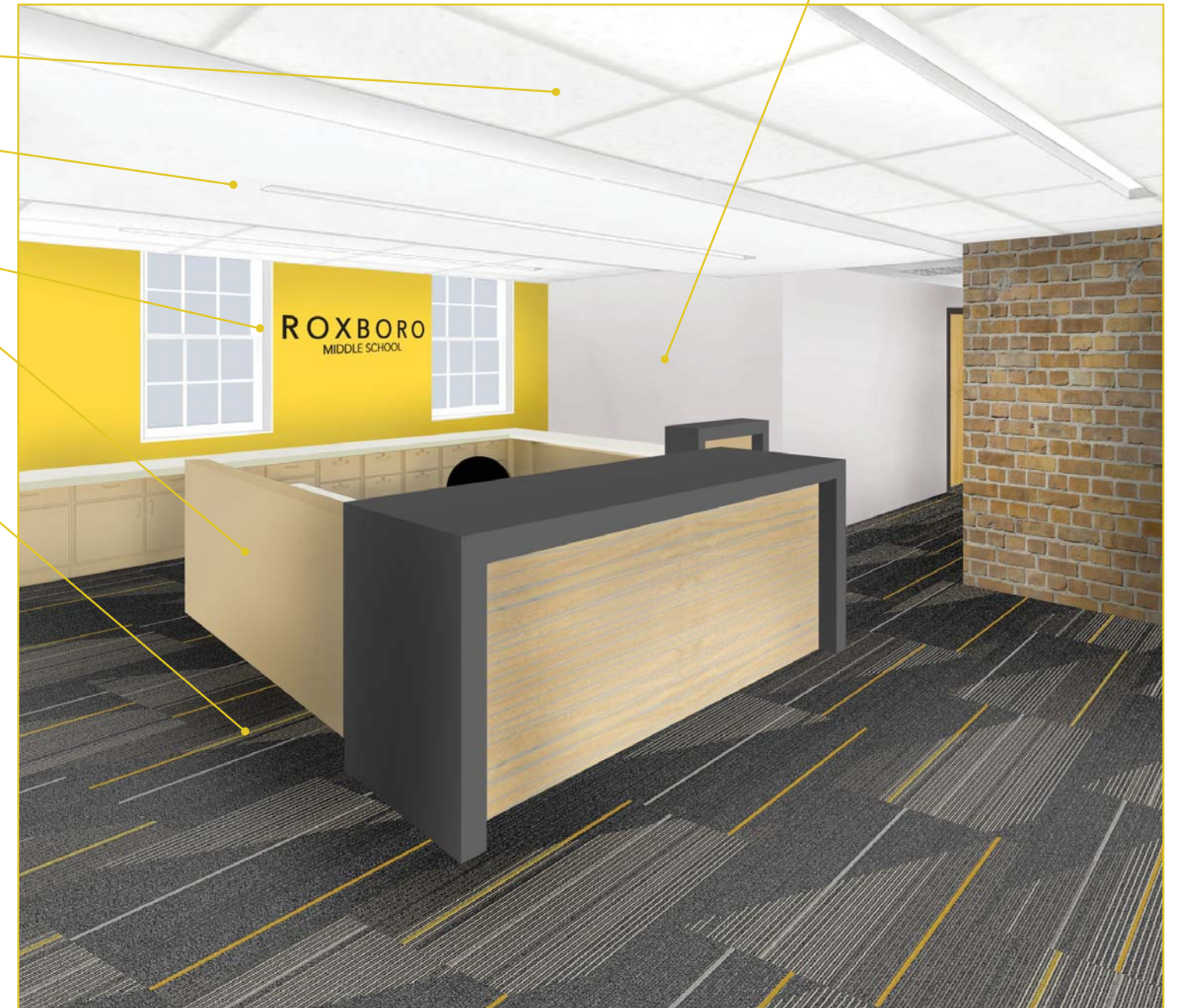
NEW LIGHT FIXTURES

NEW SIGNAGE

NEW RECEPTION DESK

NEW CARPET

NEW WALL PAINT
(WALLPAPER REMOVED)

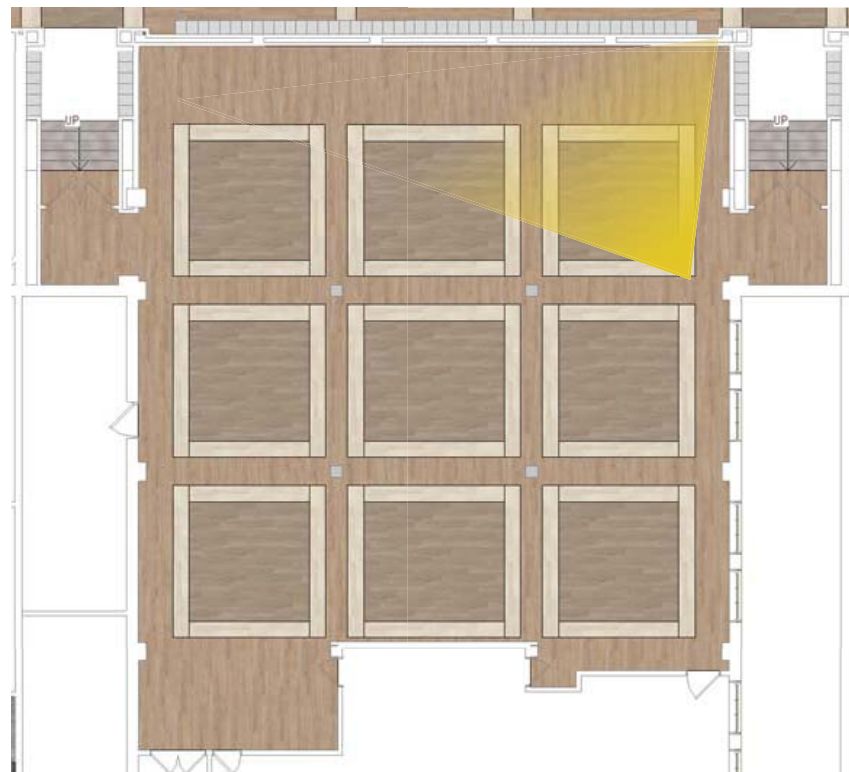


PROPOSED



EXISTING

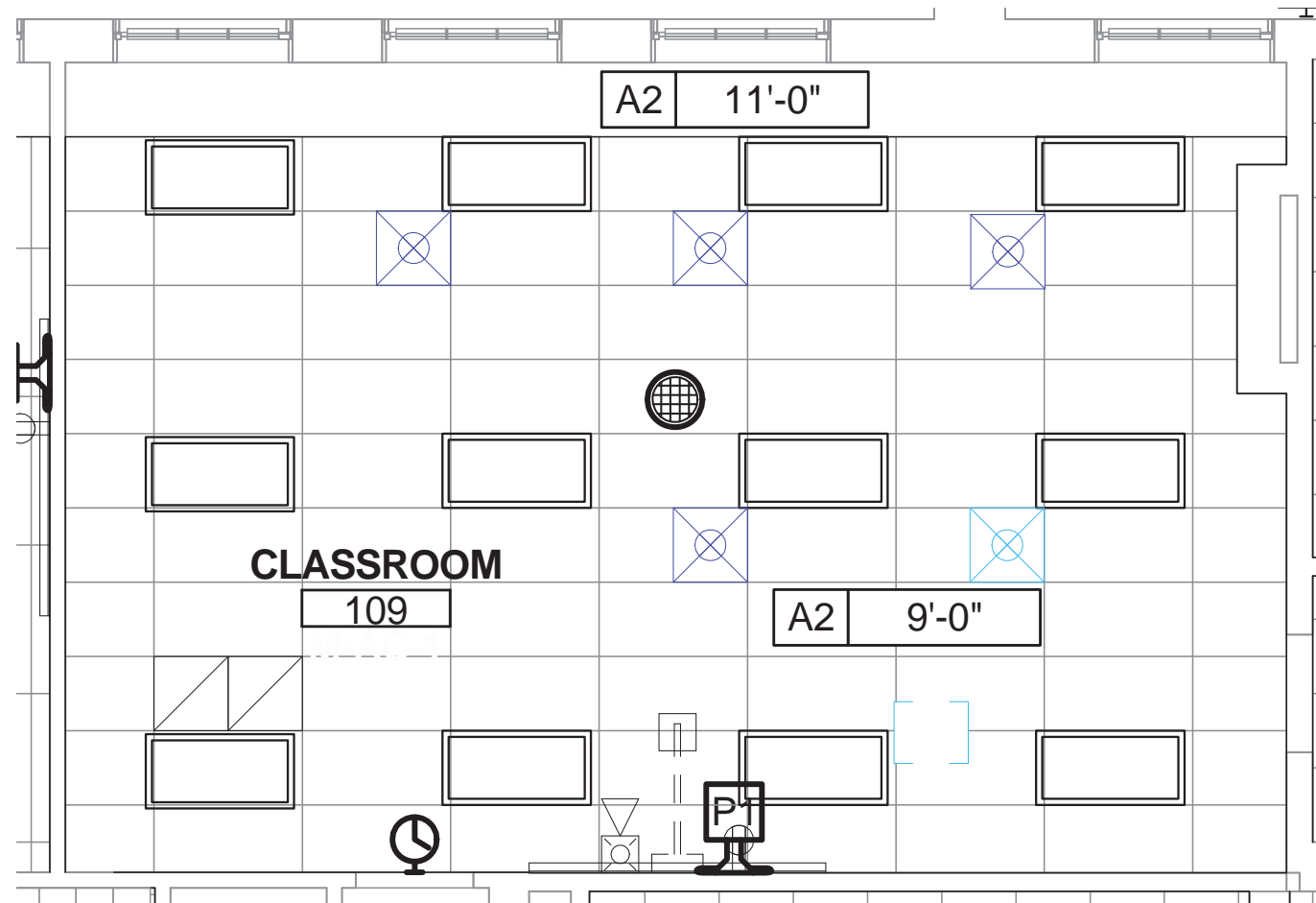
- NEW ACOUSTICAL CEILING
- NEW INTERIOR SIGNAGE
- NEW LIGHT FIXTURES
- NEW PAINT ON BRICK
- NEW VINYL TILE



PLAN



PROPOSED PAINTED WALL GRAPHICS



REFLECTED CEILING PLAN

FINISHES & EQUIPMENT

- NEW CARPET TILE
- NEW ACOUSTICAL CEILING TILE
- NEW MARKER BOARD FOR PROJECTOR
- NEW PAINT ON WALLS

TECHNOLOGY

- NEW WALL MOUNTED SHORT THROW PROJECTOR
- NEW WIRELESS ACCESS POINT
- NEW CEILING MOUNTED PAGING SPEAKERS
- NEW PAGING CALL BUTTON
- NEW CLOCK
- NEW VOICE/DATA FACEPLATES
- NEW A/V FACEPLATE FOR HOOK UPS TO PROJECTOR

LIGHTING

- NEW 2'X4' RECESSED LED FIXTURES
- NEW TECHNOLOGY OCCUPANCY SENSORS
- NEW LOW VOLTAGE DIMMER SWITCH WITH TWO ZONES
 - ZONE "A" CONTROLS TEACHING WALL
 - ZONE "B" CONTROLS REST OF LIGHTING
- NEW DAYLIGHT SENSOR BY THE WINDOWS
- ENERGY CODE REQUIREMENT FOR AUTOMATIC DAY LIGHTING CONTROL

HVAC

- NEW CO2 SENSOR INTERLOCKED WITH VAV SHUT OFF BOX
- NEW WALL THERMOSTAT INTERLOCKED WITH INDIVIDUAL CLASSROOM WSHP
- NEW VAV SHUT OFF BOX (ABOVE CEILING FOR NEUTRAL OA FROM THE DOAS)
- NEW SUPPLY DIFFUSERS & RETURN GRILLES DUCTED TO/FROM THE INDIVIDUAL CLASSROOM WSHP
- NEW EXHAUST GRILLE BACK TO DOAS

POWER

- NEW GENERAL PURPOSE DUPLEX RECEPTACLES (4)
- NEW DUPLEX RECEPTACLE FOR PROJECTOR (1)
- NEW QUAD RECEPTACLE AT TEACHER LOCATION (1)

FIRE ALARM

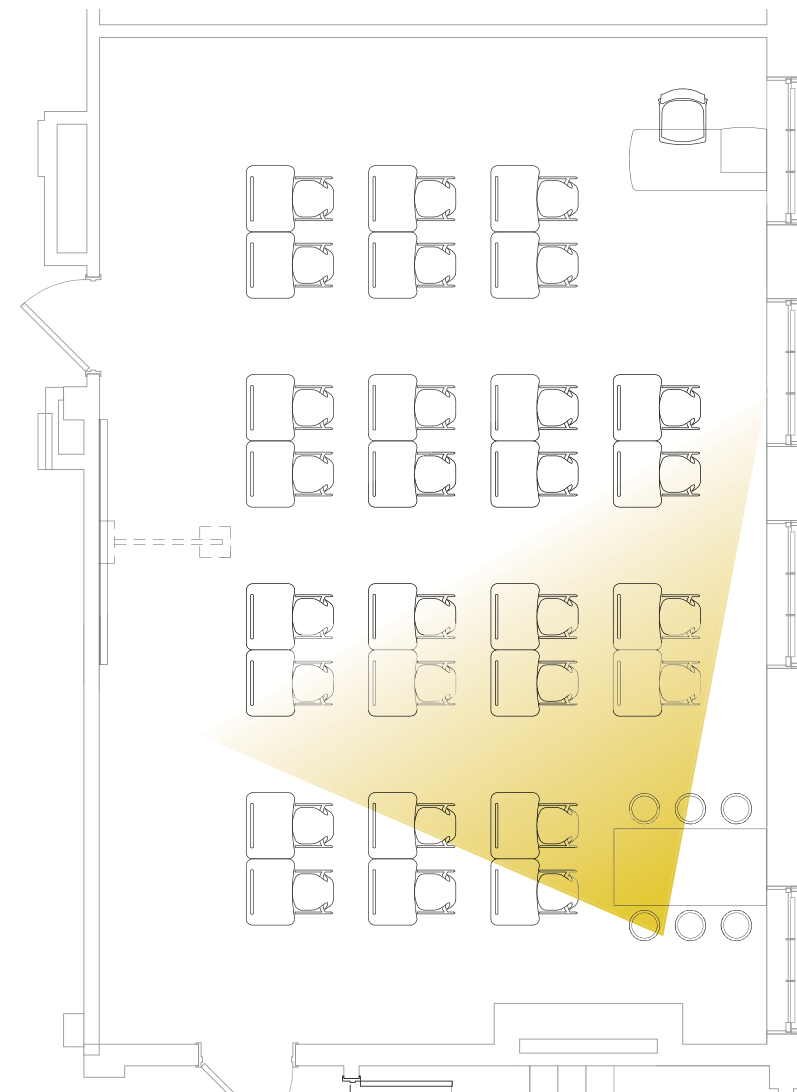
- NEW FIRE ALARM SPEAKER STROBE

ALTERNATES

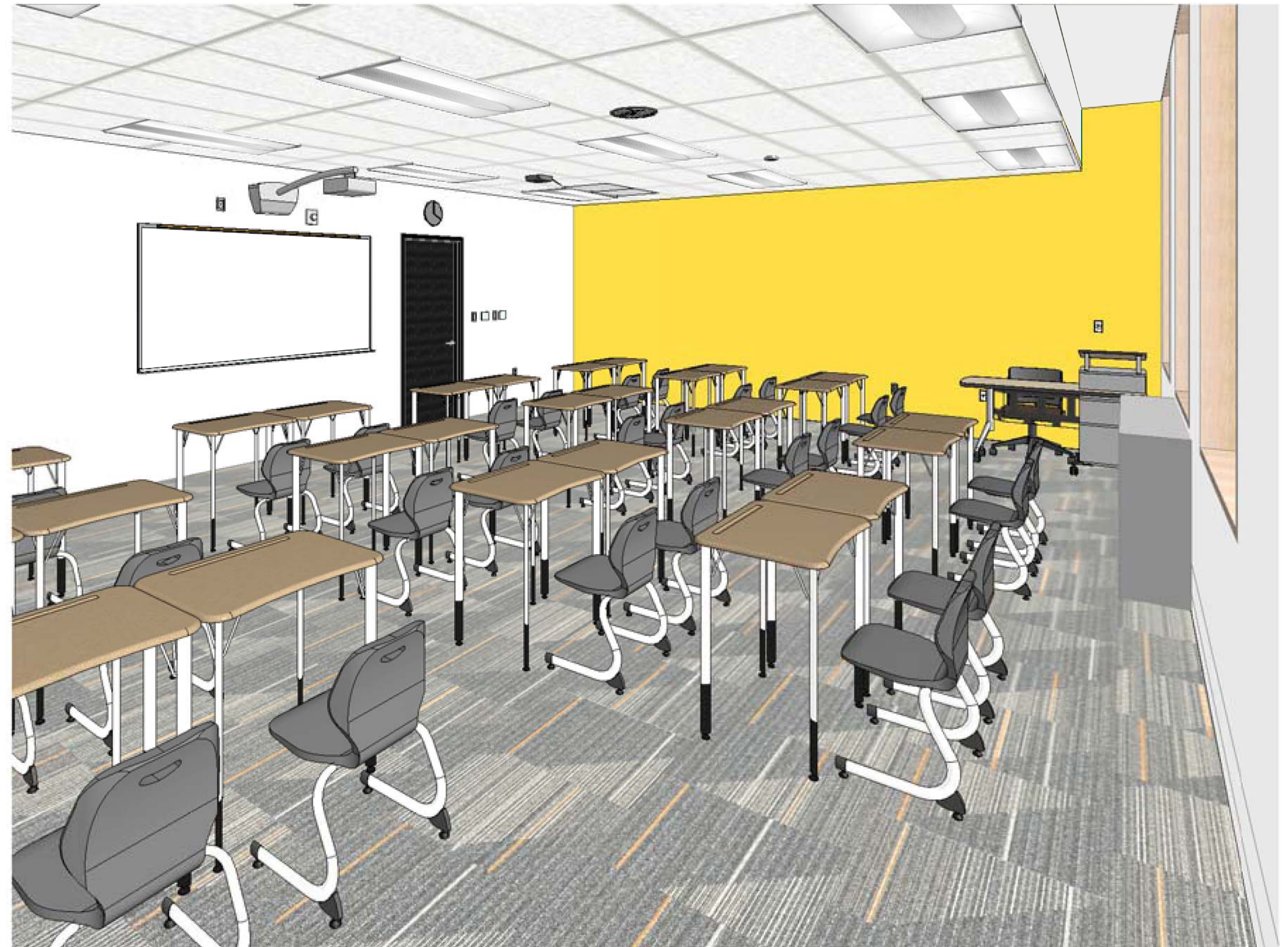
- NEW TELEPHONE HANDSET
- NEW SOUND REINFORCEMENT SYSTEM
 - INCLUDES SPEAKERS, AMPLIFIER MICROPHONES
- NEW QUAD RECEPTACLE FOR SOUND REINFORCEMENT LOCATED AT TEACHER DESK

ALL EXISTING VISUAL DISPLAY BOARDS ON THE PROJECTOR WALL WILL BE REMOVED. A NEW 8 FEET WIDE MARKER BOARD WILL BE PROVIDED TO PROJECT UPON.

THE RENDERING ILLUSTRATES NEW FINISHES AND EQUIPMENT. THE FURNITURE IS NOT IN CONTRACT. THE EXISTING VISUAL DISPLAY BOARDS ARE NOT SHOWN.



PLAN



PROPOSED DESIGN