

Cleveland Heights - University Heights City School District Citizens Facilities Committee

September 28, 2010



Welcome



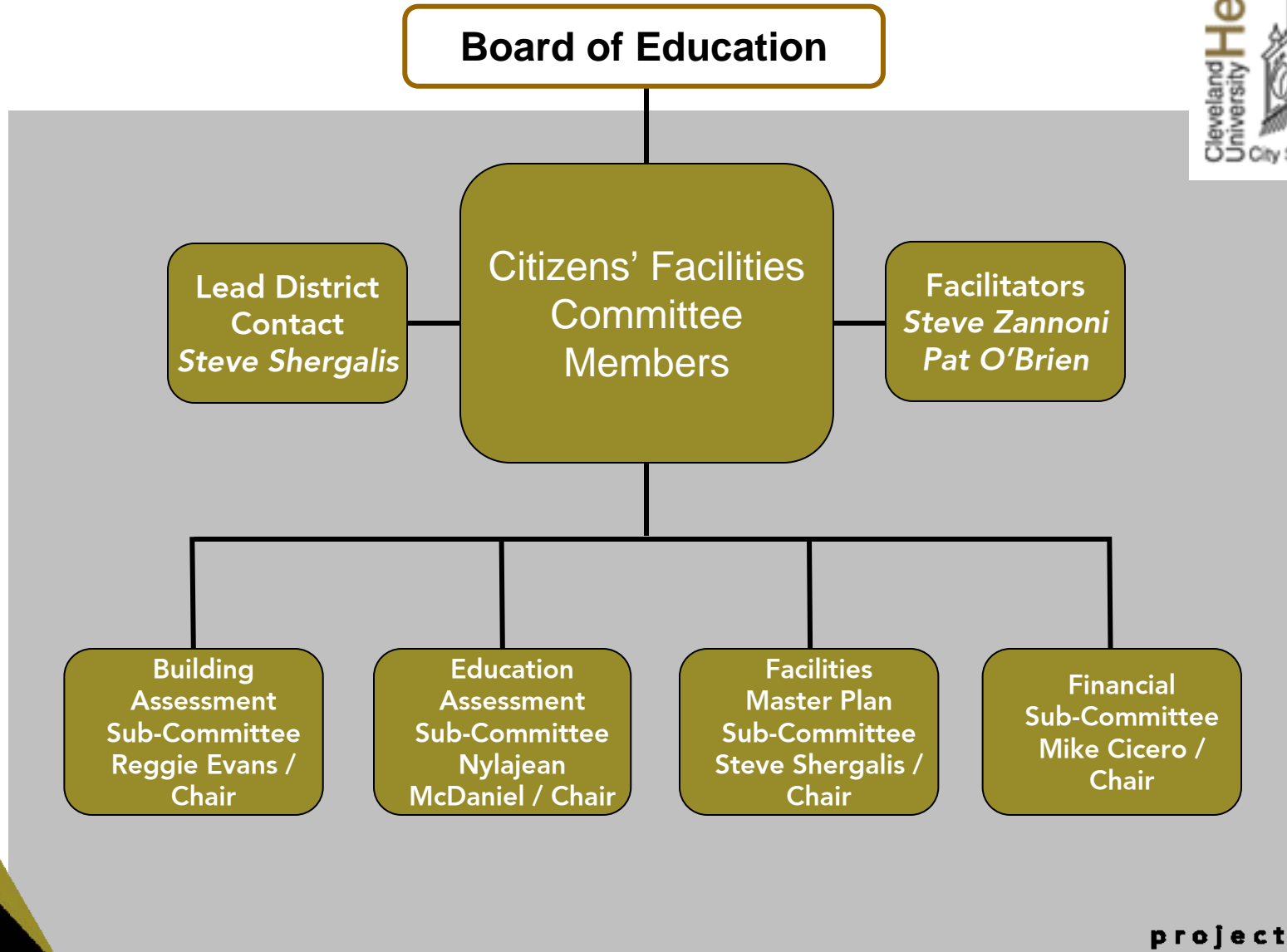
Cleveland Heights - University Heights City School District Citizens Facilities Committee

September 28, 2010

Committee Structure



CITIZENS FACILITIES COMMITTEE
Cleveland Heights-University Heights City School District



Cleveland Heights - University Heights City School District Citizens Facilities Committee

September 28, 2010

Polling Survey of the Committee



CH-UH Citizens Facilities Committee

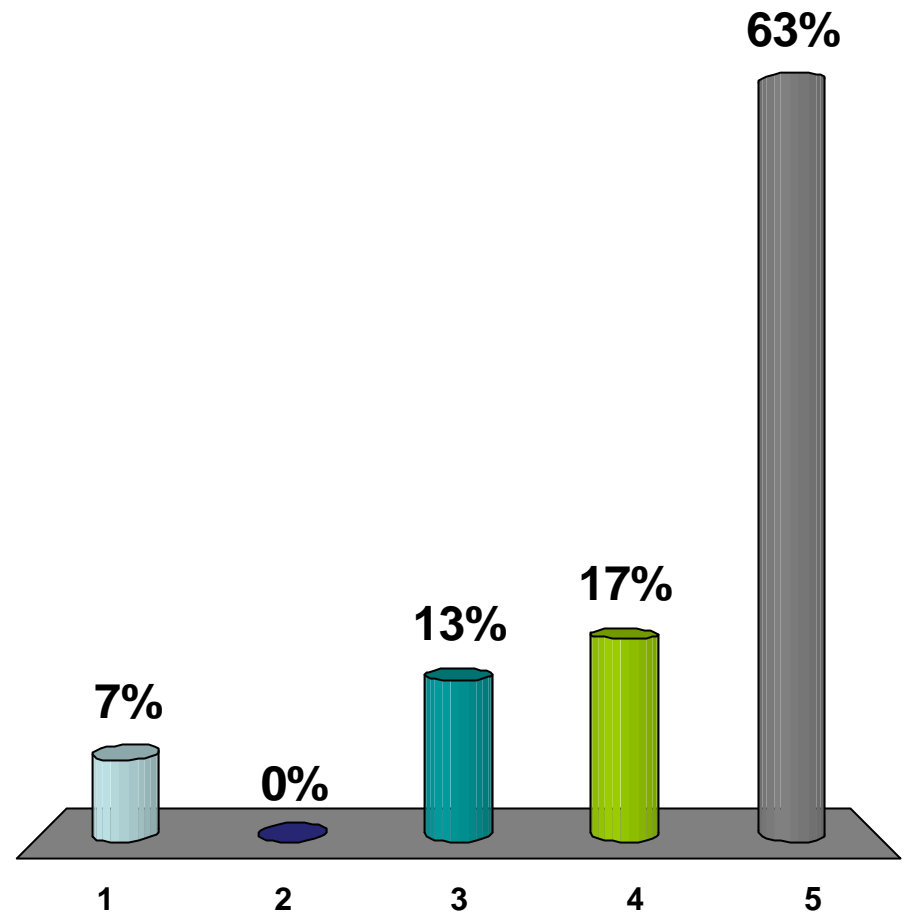
Demographics

Who is the Committee?



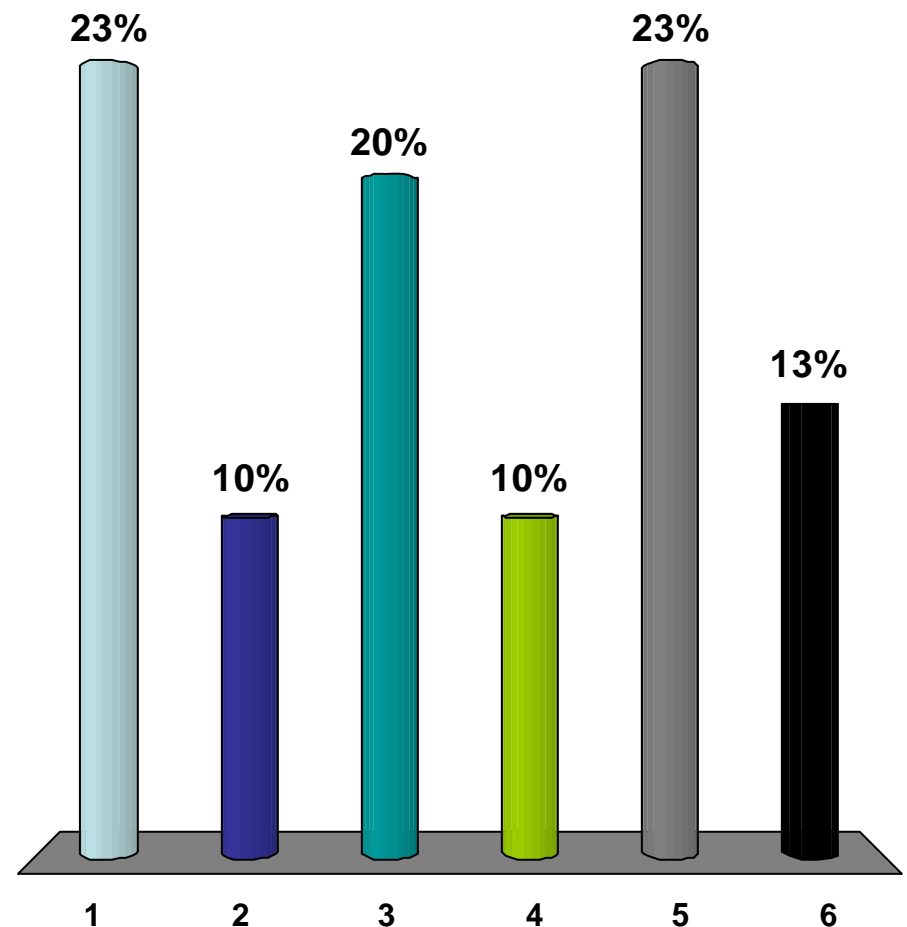
Are you a parent of a student in the CH-UH schools?

1. Yes, a elementary student
2. Yes, a middle school student
3. Yes, a high school student
4. Yes, combination
5. No



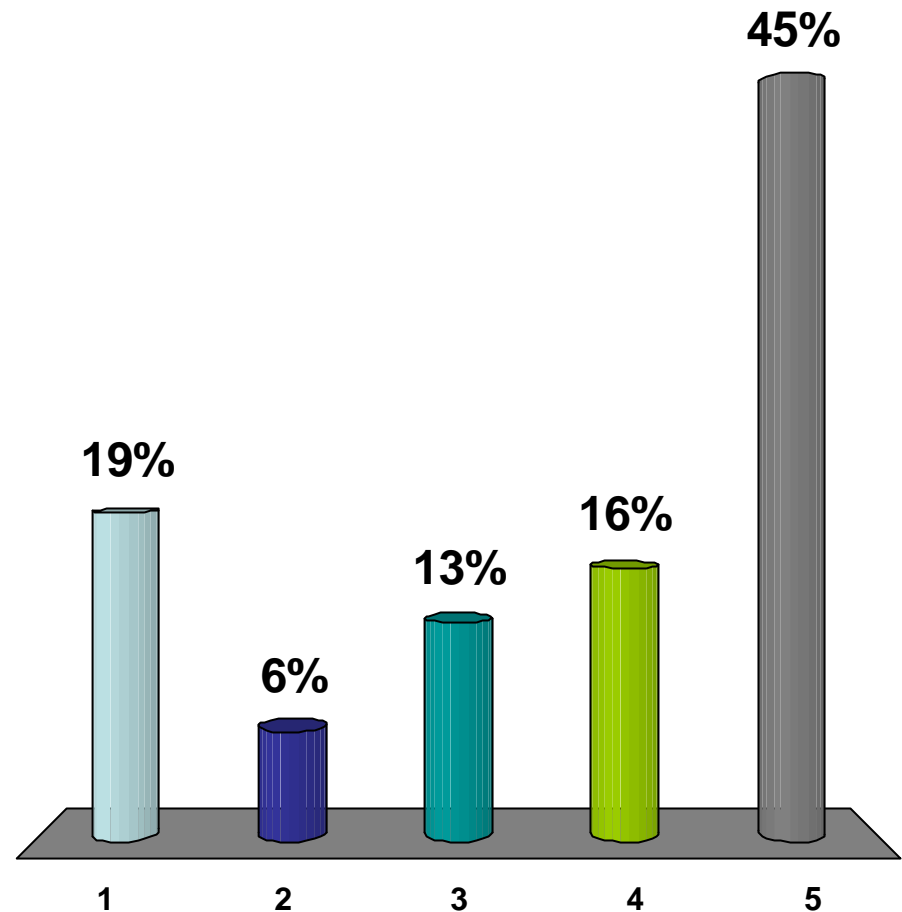
Of the following which **best** describes you?

1. Parent of a present or former student(s) in the CH-UH Schools
2. Teacher for CH-UH Schools
3. Administrator for CH-UH Schools
4. Public Official
5. Business/Professional
6. Other



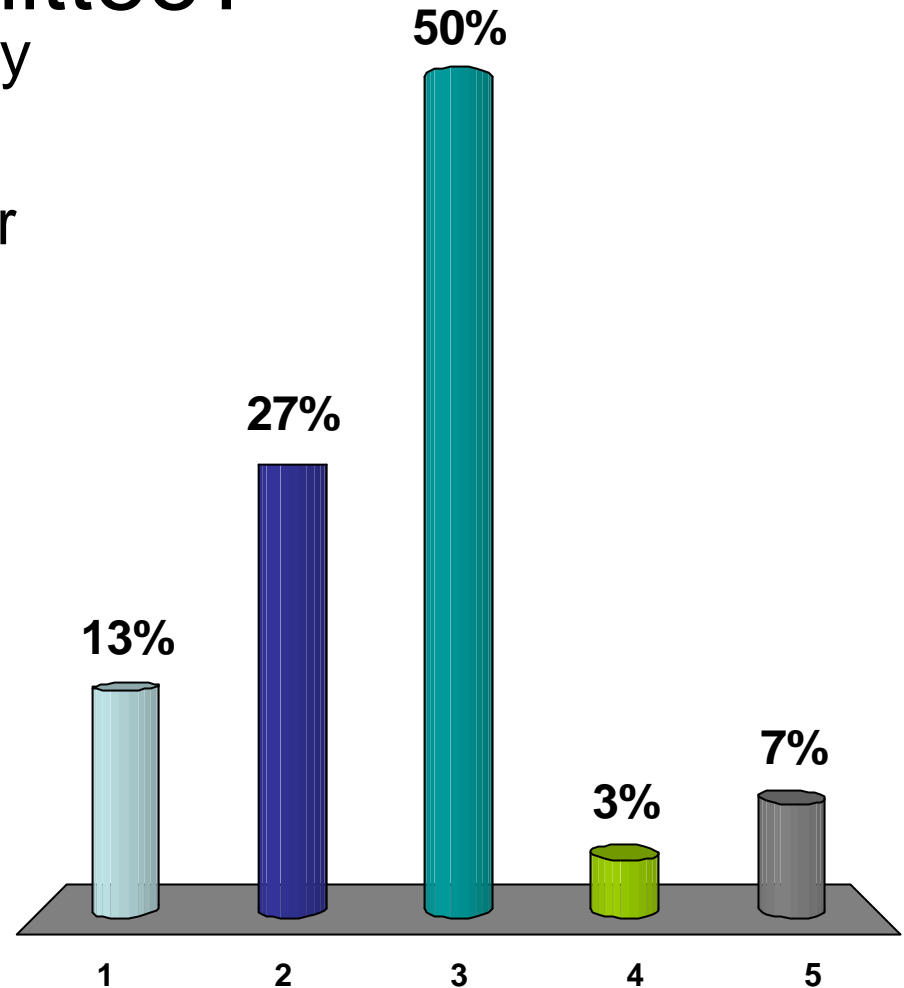
How long have you lived or worked in the CH-UH City School District?

1. 0-5 years
2. 5-10 years
3. 10-15 years
4. 15-20 years
5. over 20 years



Of the Following, which **best** describes your reason for participating on the committee?

1. Improve the physical quality of the CH-UH facilities
2. Improve the way we deliver education
3. Important to the future of our community
4. Concern for the long term financial strength of the CH-UH City School district
5. Other



CH-UH Citizens Facilities Committee

Observations

What are your thoughts?



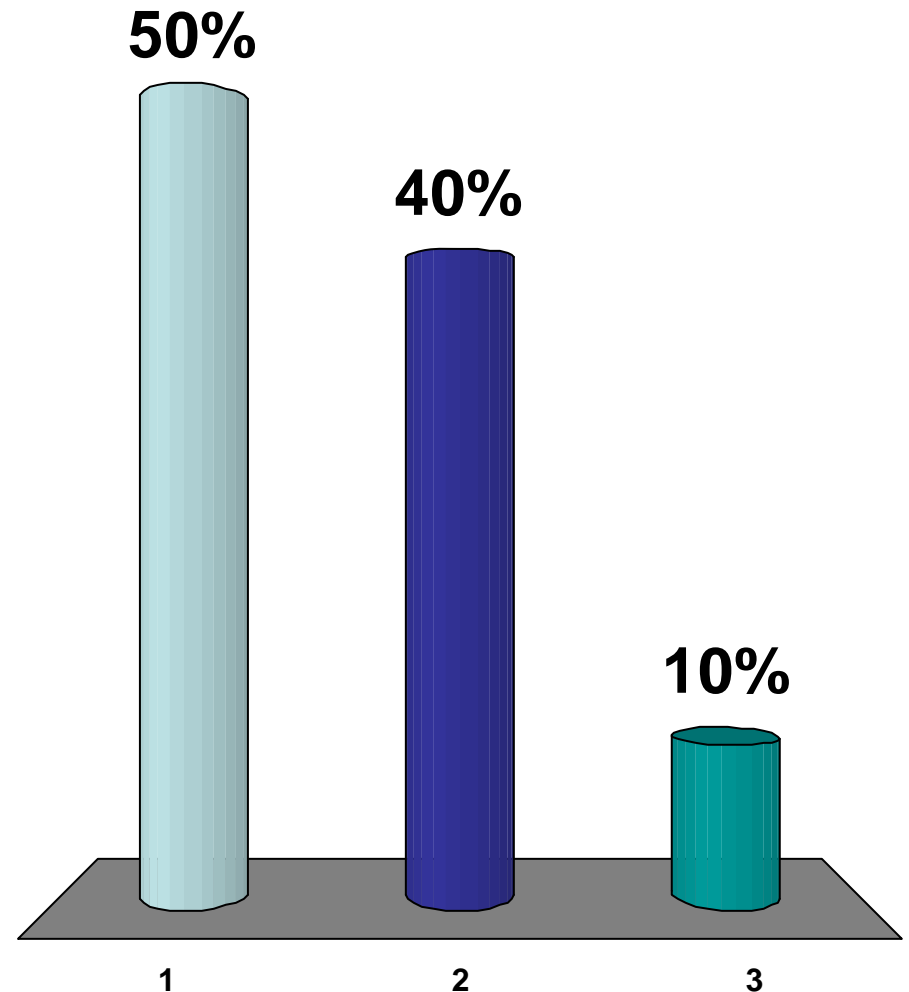
CH-UH Citizens Facilities Committee

Building Assessment



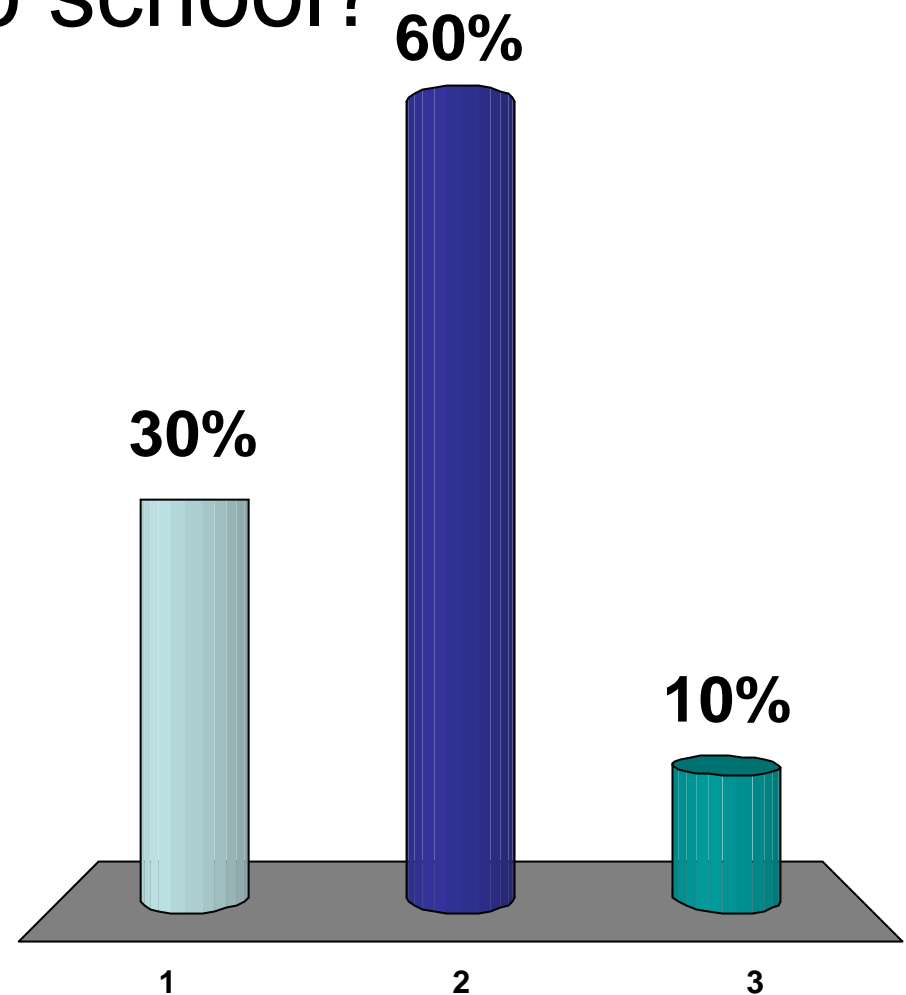
To the **best** of your knowledge, how would you rate the physical condition CH-UH school facilities?

1. Good Condition
2. Poor Condition
3. Not Familiar



Do you believe the physical condition of the CH-UH facilities is consistent from school to school?

1. Yes
2. No
3. Don't Know



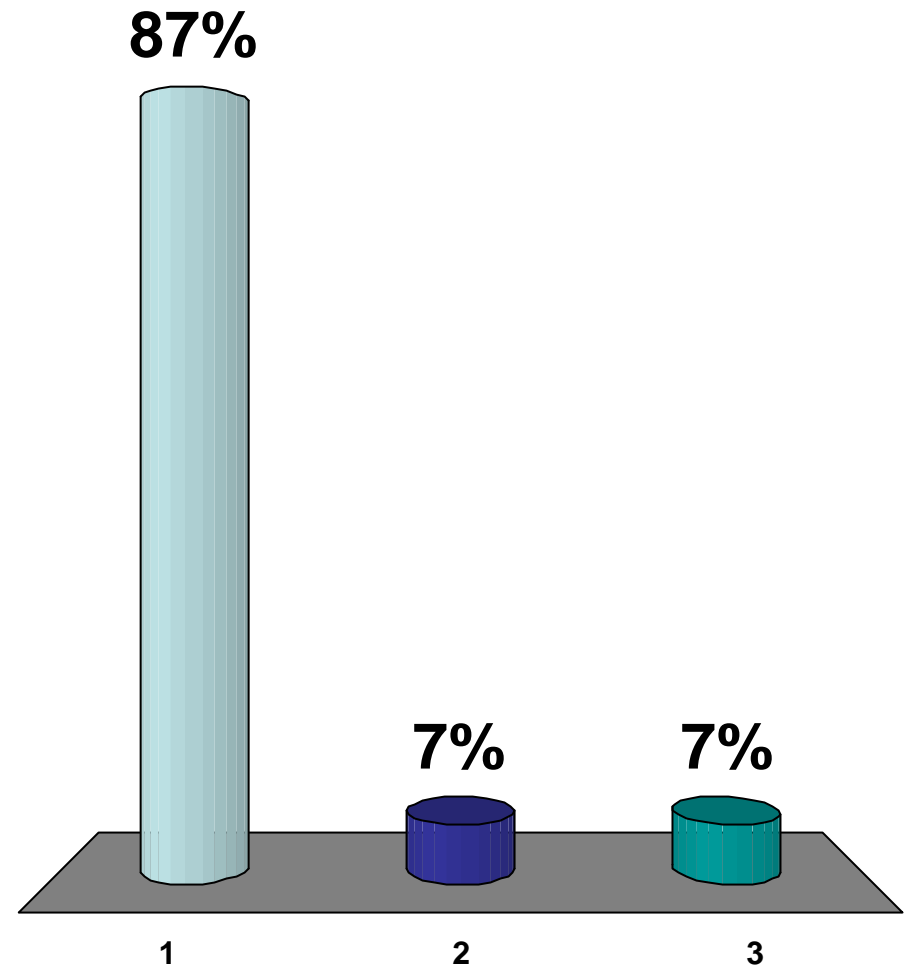
CH-UH Citizens Facilities Committee

Educational Assessment



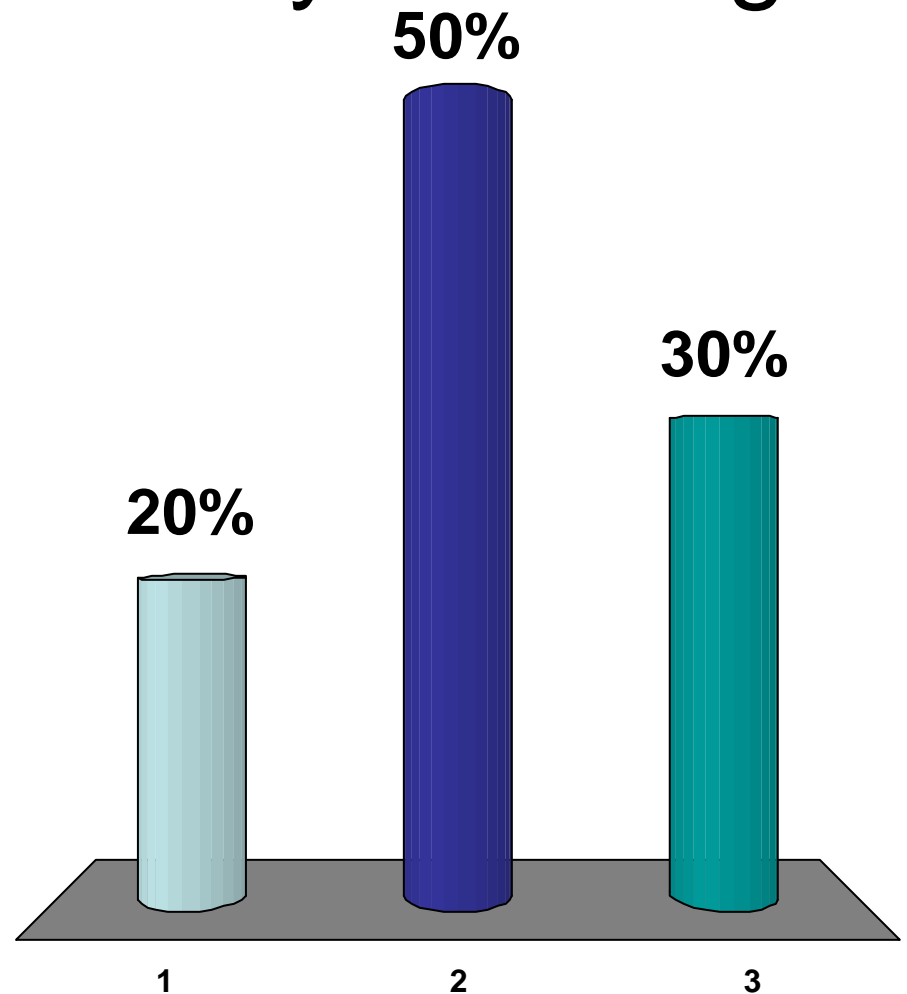
Do you believe the physical condition of a school affects the educational outcome of students?

1. Yes
2. No
3. Don't Know



To the **best** of your knowledge, do the facilities support our educational programs and 21st Century Learning?

1. Yes
2. No
3. Don't Know



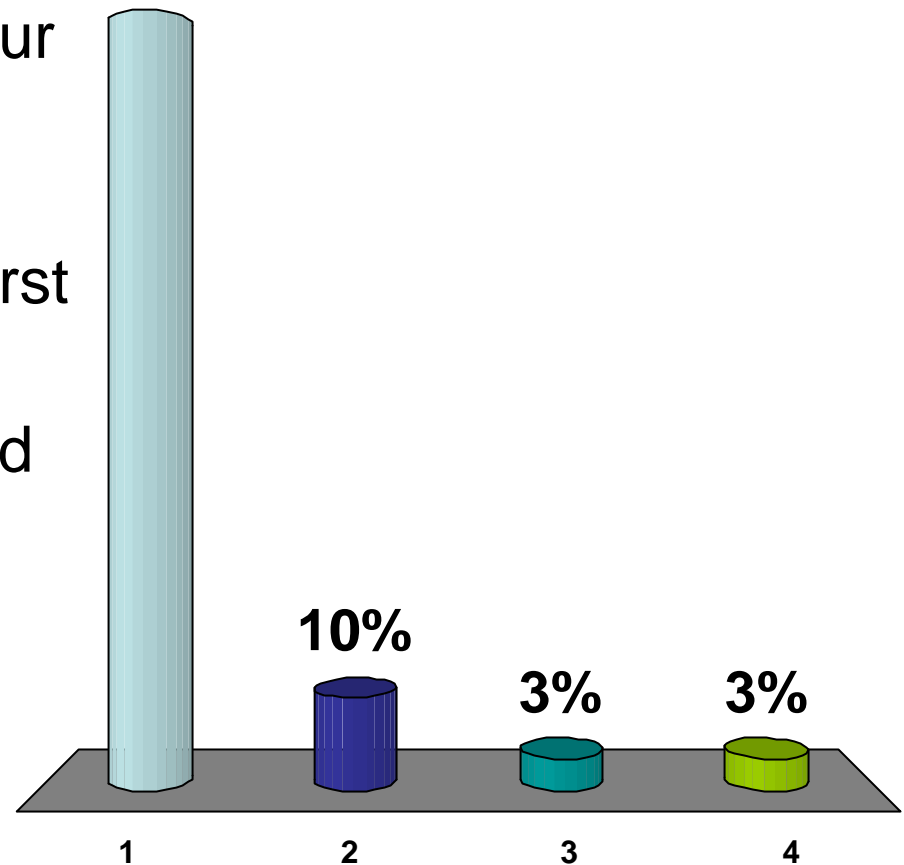
CH-UH Citizens Facilities Committee

Planning



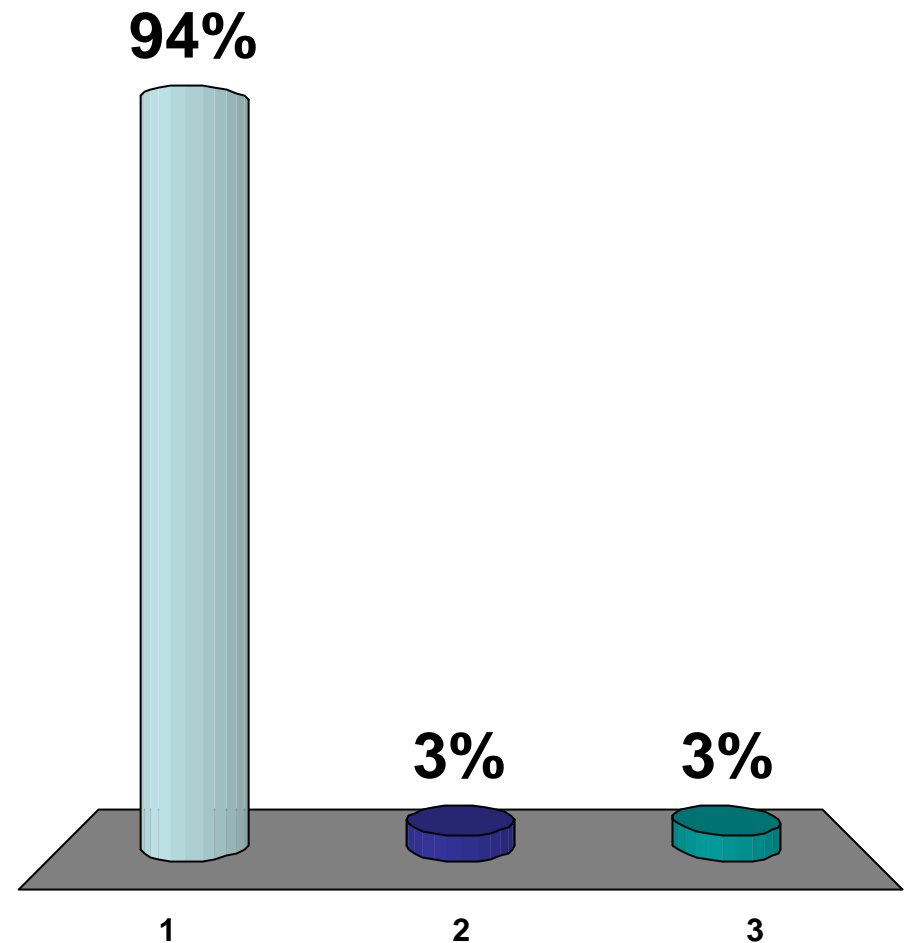
Of the following, which best describes your philosophy on school facilities?

1. Quality learning environments including arts and athletics should be our first priority **83%**
2. Sustainable “Green” buildings should be our first priority
3. Low operating cost should be our first priority
4. What was good enough when I went to school is good enough today



Planning for the CH-UH Facilities public input is critical for success

1. Agree
2. Disagree
3. Neutral



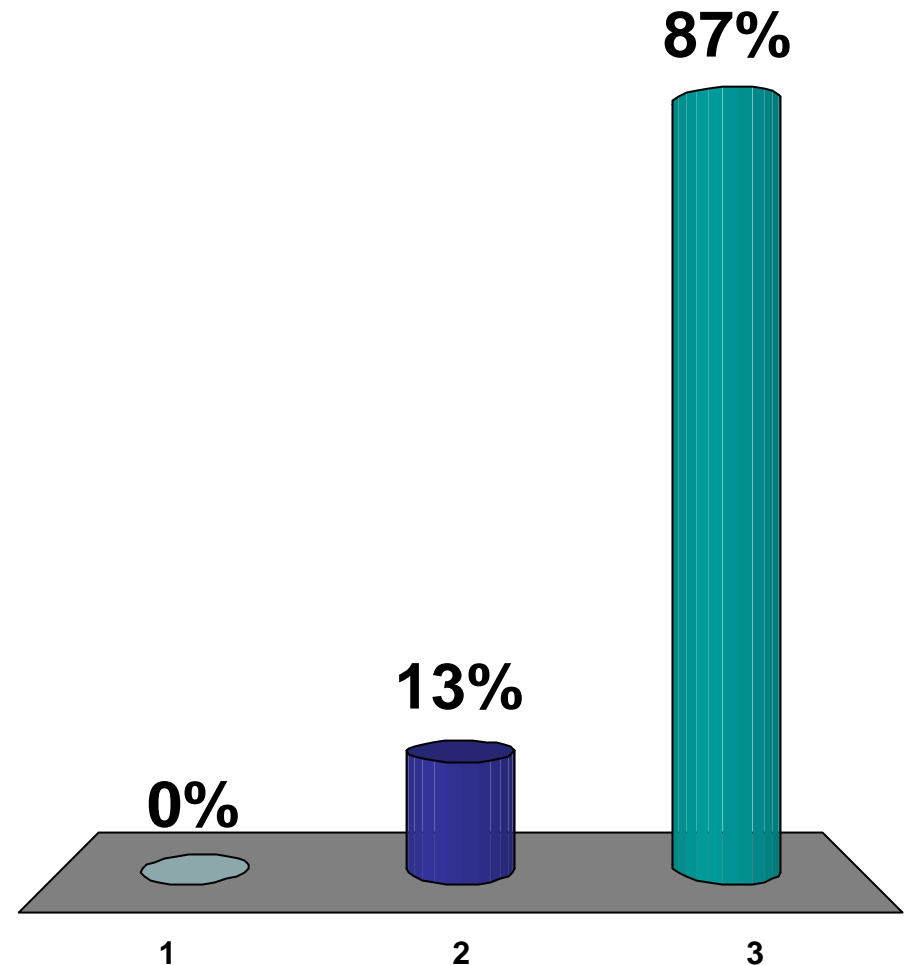
CH-UH Citizens Facilities Committee

Finance



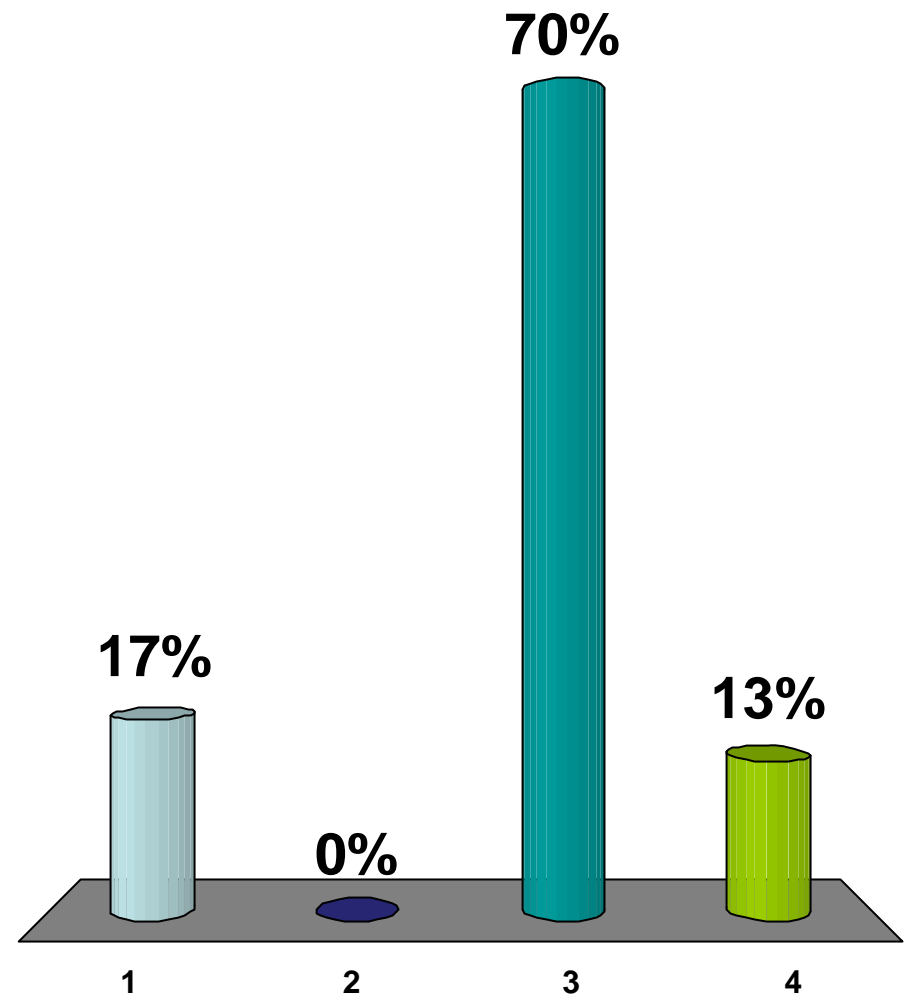
If we need to spend funds to align our facilities with educational goals and outcomes the cost should be...

1. Managed with current budgets
2. Capitalized in a bond issue that the public must approve
3. Combination of budget management and public approved bond issue



If it is determined that funding is needed then what timeline should be considered?

1. Quickly as possible
2. Wait till the economy improves
3. Multi year phased plan
4. Don't Know





Meetings



- December 8, 2010 - Roxboro Middle School
Subcommittee Presentations - Public Input
- March 10, 2011 - Monticello Middle School
Subcommittee Presentations
- March 24, 2011 - Cleveland Heights High
Public Input
- May 19, 2011 - Boulevard Elementary
Final Committee Meeting
- June 21, 2011 - BOE Offices
Report to the Board



Homework



Seeking Community Input

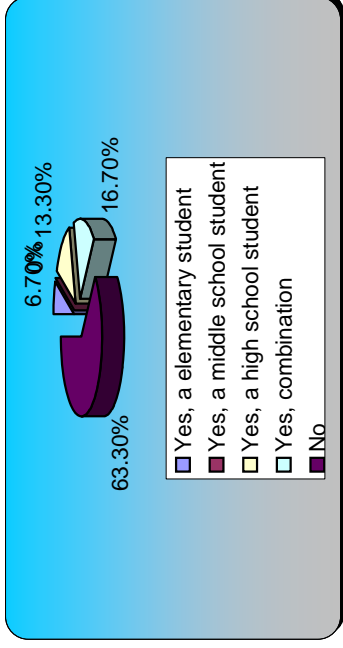
- Seek and engage your friends and neighbors on what their thoughts are on the facilities of the CH-UH city schools.
- Record their thoughts and submit them to
Steve Shergalis
Director of Business Services
216-320-2005
s_shergalis@chuh.org

Turning Graphical Results by Question

Session Name: Current Session
 Created: 9/28/2010 9:11 PM

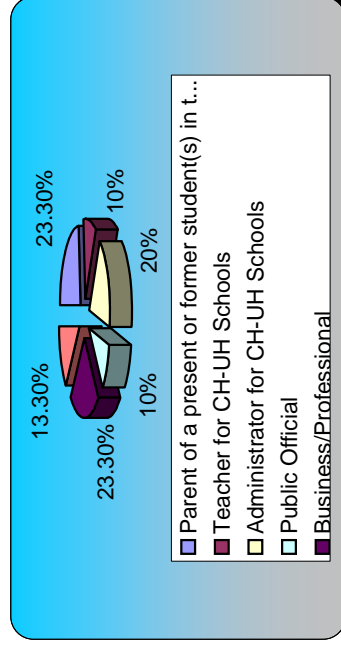
1.) Are you a parent of a student in the CH-UH schools? (multiple choice)

	Responses
Yes, a elementary student	2 6.67%
Yes, a middle school student	0 0%
Yes, a high school student	4 13.33%
Yes, combination	5 16.67%
No	19 63.33%
Totals	30 100%



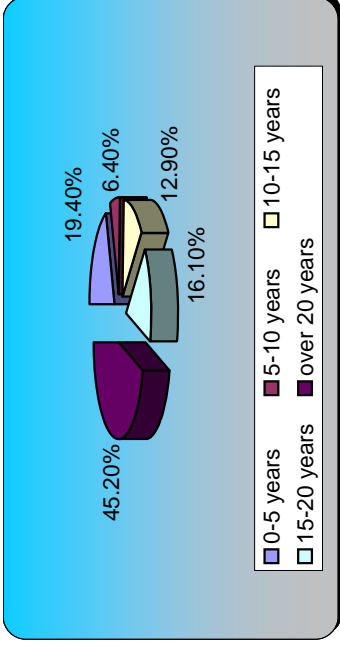
2.) Of the following which best describes you? (multiple choice)

	Responses
Parent of a present or former student(s) in t...	7 23.33%
Teacher for CH-UH Schools	3 10%
Administrator for CH-UH Schools	6 20%
Public Official	3 10%
Business/Professional	7 23.33%
Other	4 13.33%
Totals	30 100%



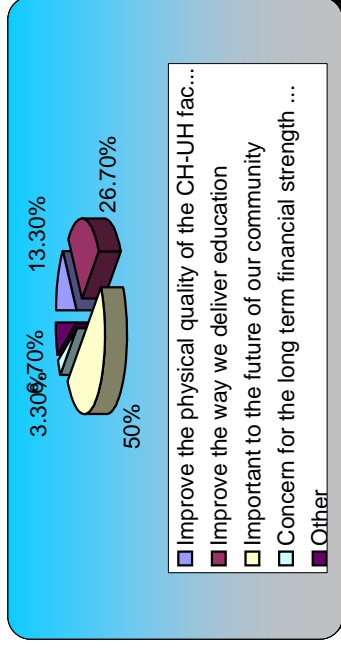
3.) How long have you lived or worked in the CH-UH City School District? (multiple choice)

	Responses
0-5 years	6 19.35%
5-10 years	2 6.45%
10-15 years	4 12.90%
15-20 years	5 16.13%
over 20 years	14 45.16%
Totals	31 100%



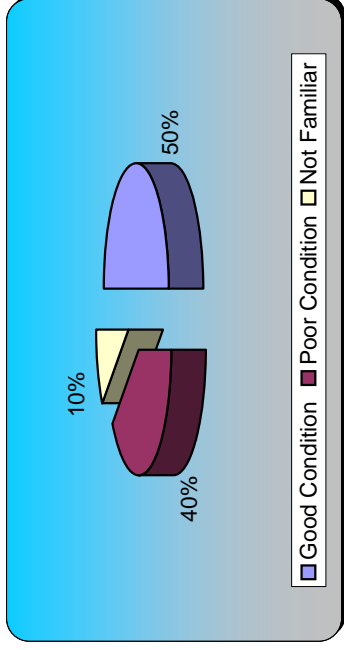
4.) Of the Following, which best describes your reason for participating on the committee? (multiple choice)

	Responses
Improve the physical quality of the CH-UH fac...	4 13.33%
Improve the way we deliver education	8 26.67%
Important to the future of our community	15 50%
Concern for the long term financial strength ...	1 3.33%
Other	2 6.67%
Totals	30 100%



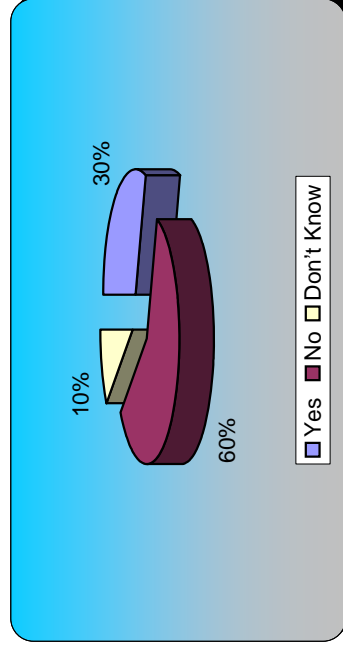
5.) To the best of your knowledge, how would you rate the physical condition CH-UH school facilities? (multiple choice)

	Responses
Good Condition	15 50%
Poor Condition	12 40%
Not Familiar	3 10%
Totals	30 100%



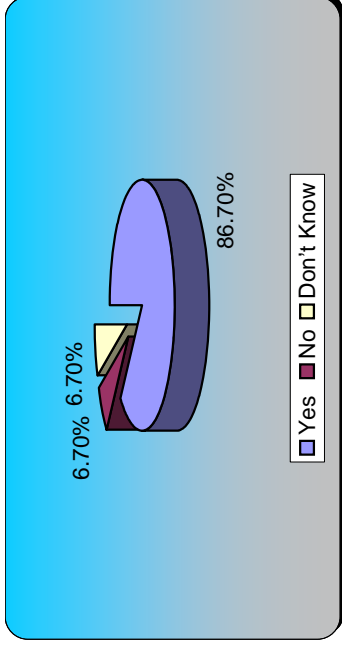
6.) Do you believe the physical condition of the CH-UH facilities is consistent from school to school? (multiple choice)

	Responses
Yes	9 30%
No	18 60%
Don't Know	3 10%
Totals	30 100%



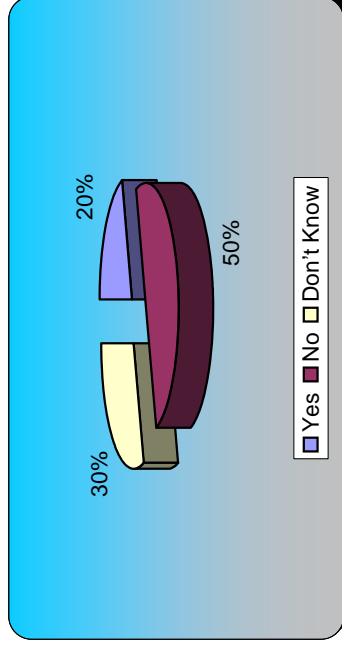
7.) Do you believe the physical condition of a school affects the educational outcome of students? (multiple choice)

	Responses
Yes	26 86.67%
No	2 6.67%
Don't Know	2 6.67%
Totals	30 100%

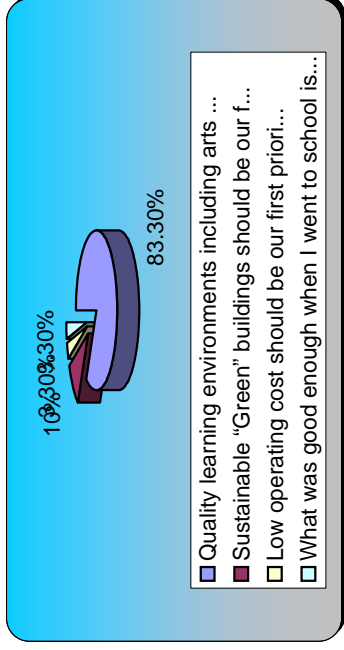


8.) To the best of your knowledge, do the facilities support our educational programs and 21st Century Learning? (multiple choice)

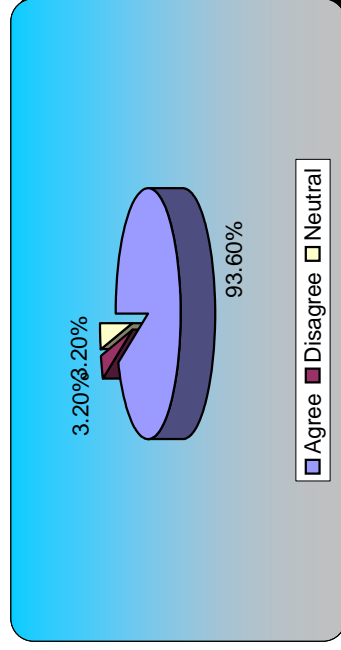
	Responses
Yes	6 20%
No	15 50%
Don't Know	9 30%
Totals	30 100%



9.) Of the following, which best describes your philosophy on school facilities? (multiple choice)	Responses
Quality learning environments including arts ...	25 83.33%
Sustainable "Green" buildings should be our f...	3 10%
Low operating cost should be our first priori...	1 3.33%
What was good enough when I went to school is...	1 3.33%
Totals	30 100%

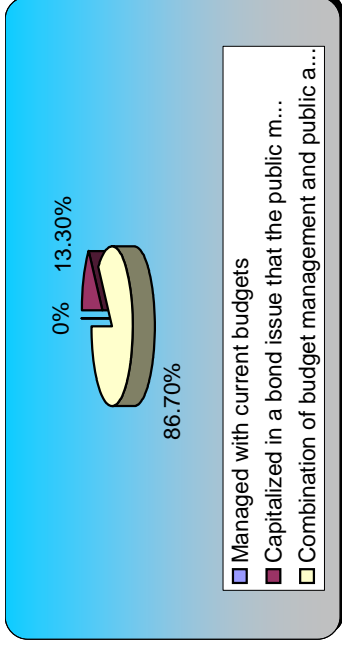


10.) Planning for the CH-UH Facilities public input is critical for success (multiple choice)	Responses
Agree	29 93.55%
Disagree	1 3.23%
Neutral	1 3.23%
Totals	31 100%



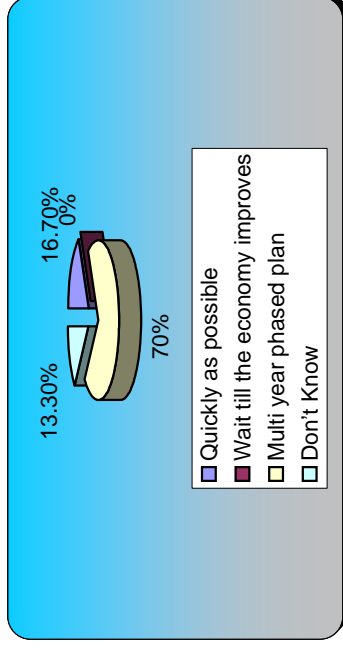
11.) If we need to spend funds to align our facilities with educational goals and outcomes the cost should be... (multiple choice)

	Responses
Managed with current budgets	0 0%
Capitalized in a bond issue that the public m...	4 13.33%
Combination of budget management and public a...	26 86.67%
Totals	30 100%



12.) If it is determined that funding is needed then what timeline should be considered? (multiple choice)

	Responses
Quickly as possible	5 16.67%
Wait till the economy improves	0 0%
Multi year phased plan	21 70%
Don't Know	4 13.33%
Totals	30 100%



Turning Results by Question

Session Name: Current Session
Created: 9/28/2010 9:11 PM

1.) Are you a parent of a student in the CH-UH schools? (multiple choice)

	Responses	
	(percent)	(count)
Yes, a elementary student	6.67%	2
Yes, a middle school student	0%	0
Yes, a high school student	13.33%	4
Yes, combination	16.67%	5
No	63.33%	19
Totals	100%	30

2.) Of the following which best describes you? (multiple choice)

	Responses	
	(percent)	(count)
Parent of a present or former student(s) in the CH-UH Schools	23.33%	7
Teacher for CH-UH Schools	10%	3
Administrator for CH-UH Schools	20%	6
Public Official	10%	3
Business/Professional	23.33%	7
Other	13.33%	4
Totals	100%	30

3.) How long have you lived or worked in the CH-UH City School District? (multiple choice)

	Responses	
	(percent)	(count)
0-5 years	19.35%	6
5-10 years	6.45%	2
10-15 years	12.90%	4
15-20 years	16.13%	5
over 20 years	45.16%	14
Totals	100%	31

4.) Of the Following, which best describes your reason for participating on the committee? (multiple choice)

	Responses	
	(percent)	(count)
Improve the physical quality of the CH-UH facilities	13.33%	4
Improve the way we deliver education	26.67%	8
Important to the future of our community	50%	15
Concern for the long term financial strength of the CH-UH City School district	3.33%	1
Other	6.67%	2
Totals	100%	30

5.) To the best of your knowledge, how would you rate the physical condition CH-UH school facilities? (multiple choice)

	Responses (percent) (count)	
Good Condition	50%	15
Poor Condition	40%	12
Not Familiar	10%	3
Totals	100%	30

6.) Do you believe the physical condition of the CH-UH facilities is consistent from school to school? (multiple choice)

	Responses (percent) (count)	
Yes	30%	9
No	60%	18
Don't Know	10%	3
Totals	100%	30

7.) Do you believe the physical condition of a school affects the educational outcome of students? (multiple choice)

	Responses (percent) (count)	
Yes	86.67%	26
No	6.67%	2
Don't Know	6.67%	2
Totals	100%	30

8.) To the best of your knowledge, do the facilities support our educational programs and 21st Century Learning? (multiple choice)

	Responses (percent) (count)	
Yes	20%	6
No	50%	15
Don't Know	30%	9
Totals	100%	30

9.) Of the following, which best describes your philosophy on school facilities? (multiple choice)

	Responses (percent) (count)	
Quality learning environments including arts and athletics should be our first priority	83.33%	25
Sustainable "Green" buildings should be our first priority	10%	3
Low operating cost should be our first priority	3.33%	1
What was good enough when I went to school is good enough today	3.33%	1
Totals	100%	30

10.) Planning for the CH-UH Facilities public input is critical for success (multiple choice)

	Responses (percent) (count)	
Agree	93.55%	29
Disagree	3.23%	1
Neutral	3.23%	1
Totals	100%	31

11.) If we need to spend funds to align our facilities with educational goals and outcomes the cost should be... (multiple choice)

	Responses (percent) (count)	
Managed with current budgets	0%	0
Capitalized in a bond issue that the public must approve	13.33%	4
Combination of budget management and public approved bond issue	86.67%	26
Totals	100%	30

12.) If it is determined that funding is needed then what timeline should be considered? (multiple choice)

	Responses (percent) (count)	
Quickly as possible	16.67%	5
Wait till the economy improves	0%	0
Multi year phased plan	70%	21
Don't Know	13.33%	4
Totals	100%	30

Turning Demographic Comparison

Session Name: Current Session
 Created: 9/28/2010 9:11 PM

1.) Are you a parent of a student in the CH-UH schools? (multiple choice)

	Yes, a elementary student	Yes, a middle school student	Yes, a high school student	Yes, combination	No	Total
Yes, a elementary student	2	0	0	0	0	2
Yes, a middle school student	0	0	0	0	0	0
Yes, a high school student	0	0	4	0	0	4
Yes, combination	0	0	0	5	0	5
No	0	0	0	0	19	19
Parent of a present or former student(s) in the CH-UH Schools	2	0	2	2	0	6
Teacher for CH-UH Schools	0	0	0	0	3	3
Administrator for CH-UH Schools	0	0	0	0	6	6
Public Official	0	0	1	0	2	3
Business/Professional	0	0	0	2	5	7
Other	0	0	1	1	2	4
0-5 years	1	0	0	0	5	6
5-10 years	0	0	0	0	2	2
10-15 years	1	0	0	1	2	4
15-20 years	0	0	3	1	1	5
over 20 years	0	0	1	3	9	13
Improve the physical quality of the CH-UH facilities	0	0	1	1	2	4
Improve the way we deliver education	0	0	1	0	6	7
Important to the future of our community	2	0	2	3	8	15
Concern for the long term financial strength of the CH-UH City School district	0	0	0	0	1	1
Other	0	0	0	0	2	2
Quality learning environments including arts and athletics should be our first priority	1	0	4	4	15	24
Sustainable "Green" buildings should be our first priority	1	0	0	1	1	3
Low operating cost should be our first priority	0	0	0	0	1	1
What was good enough when I went to school is good enough today	0	0	0	0	1	1

2.) Of the following which best describes you? (multiple choice)

Parent of a present or former student(s) in the CH-UH Schools	Teacher for Administrator for CH-UH Schools		Public Official	Business/Professional	Other	Total
	CH-UH Schools	Schools				
Yes, a elementary student	2	0	0	0	0	2
Yes, a middle school student	0	0	0	0	0	0
Yes, a high school student	2	0	1	0	1	4
Yes, combination	2	0	0	2	1	5
No	0	3	6	2	5	18
Parent of a present or former student(s) in the CH-UH Schools	7	0	0	0	0	7
Teacher for CH-UH Schools	0	3	0	0	0	3
Administrator for CH-UH Schools	0	0	6	0	0	6
Public Official	0	0	0	3	0	3
Business/Professional	0	0	0	0	7	7
Other	0	0	0	0	0	4
0-5 years	1	0	3	0	2	6
5-10 years	0	0	2	0	0	2
10-15 years	1	1	0	1	0	4
15-20 years	1	0	0	1	1	5
over 20 years	4	2	1	1	4	13
Improve the physical quality of the CH-UH facilities	2	0	1	1	0	4
Improve the way we deliver education	1	2	2	0	1	7
Important to the future of our community	4	0	1	2	6	15
Concern for the long term financial strength of the CH-UH City School district	0	0	1	0	0	1
Other	0	1	1	0	0	2
Quality learning environments including arts and athletics should be our first priority	6	3	6	2	5	25
Sustainable "Green" buildings should be our first priority	1	0	0	0	2	3
Low operating cost should be our first priority	0	0	0	0	0	1
What was good enough when I went to school is good enough today	0	0	0	1	0	1

3.) How long have you lived or worked in the CH-UH City School District? (multiple choice)

	0-5 years	5-10 years	10-15 years	15-20 years	over 20 years	Total
Yes, a elementary student	1	0	1	0	0	2
Yes, a middle school student	0	0	0	0	0	0
Yes, a high school student	0	0	0	3	1	4
Yes, combination	0	0	1	1	3	5
No	5	2	2	1	9	19
Parent of a present or former student(s) in the CH-UH Schools	1	0	1	1	4	7
Teacher for CH-UH Schools	0	0	1	0	2	3
Administrator for CH-UH Schools	3	2	0	0	1	6
Public Official	0	0	1	1	1	3
Business/Professional	2	0	0	1	4	7
Other	0	0	1	2	1	4
0-5 years	6	0	0	0	0	6
5-10 years	0	2	0	0	0	2
10-15 years	0	0	4	0	0	4
15-20 years	0	0	0	5	0	5
over 20 years	0	0	0	0	14	14
Improve the physical quality of the CH-UH facilities	1	0	0	0	3	4
Improve the way we deliver education	2	0	0	1	5	8
Important to the future of our community	3	0	2	4	6	15
Concern for the long term financial strength of the CH-UH City School district	0	1	0	0	0	1
Other	0	1	1	0	0	2
Quality learning environments including arts and athletics should be our first priority	5	2	4	4	10	25
Sustainable "Green" buildings should be our first priority	1	0	0	1	1	3
Low operating cost should be our first priority	0	0	0	0	1	1
What was good enough when I went to school is good enough today	0	0	0	0	1	1

4.) Of the Following, which best describes your reason for participating on the committees? (multiple choice)

	Improve the physical quality of the CH-UH facilities	Improve education delivery	Important to the future of our community	Concern for the long term financial strength of the CH-UH City School district	Other	Total
Yes, a elementary student	0	0	2	0	0	2
Yes, a middle school student	0	0	0	0	0	0
Yes, a high school student	1	1	2	0	0	4
Yes, combination	1	0	3	0	0	4
No	2	6	8	1	2	19
Parent of a present or former student(s) in the CH-UH Schools	2	1	4	0	0	7
Teacher for CH-UH Schools	0	2	0	0	1	3
Administrator for CH-UH Schools	1	2	1	1	1	6
Public Official	1	0	2	0	0	3
Business/Professional	0	1	6	0	0	7
Other	0	1	2	0	0	3
0-5 years	1	2	3	0	0	6
5-10 years	0	0	0	1	1	2
10-15 years	0	0	2	0	1	3
15-20 years	0	1	4	0	0	5
over 20 years	3	5	6	0	0	14
Improve the physical quality of the CH-UH facilities	4	0	0	0	0	4
Improve the way we deliver education	0	8	0	0	0	8
Important to the future of our community	0	0	15	0	0	15
Concern for the long term financial strength of the CH-UH City School district	0	0	0	1	0	1
Other	0	0	0	0	2	2
Quality learning environments including arts and athletics should be our first priority	3	6	12	1	2	24
Sustainable "Green" buildings should be our first priority	0	1	2	0	0	3
Low operating cost should be our first priority	0	0	1	0	0	1
What was good enough when I went to school is good enough today	1	0	0	0	0	1

5.) To the best of your knowledge, how would you rate the physical condition CH-UH school facilities? (multiple choice)

	Good Condition		Poor Condition		Not Familiar	Total
Yes, a elementary student	2	0	0	0	0	2
Yes, a middle school student	0	0	0	0	0	0
Yes, a high school student	2	2	0	0	0	4
Yes, combination	1	3	1	1	1	5
No	9	7	2	2	2	18
Parent of a present or former student(s) in the CH-UH Schools	4	2	1	1	1	7
Teacher for CH-UH Schools	2	1	0	0	0	3
Administrator for CH-UH Schools	2	4	0	0	0	6
Public Official	3	0	0	0	0	3
Business/Professional	3	2	2	2	2	7
Other	1	3	0	0	0	4
0-5 years	2	2	2	2	2	6
5-10 years	0	2	0	0	0	2
10-15 years	3	1	0	0	0	4
15-20 years	3	2	0	0	0	5
over 20 years	7	5	1	1	1	13
Improve the physical quality of the CH-UH facilities	1	3	0	0	0	4
Improve the way we deliver education	4	3	0	0	0	7
Important to the future of our community	9	3	3	3	3	15
Concern for the long term financial strength of the CH-UH City School district	0	1	0	0	0	1
Other	1	1	0	0	0	2
Quality learning environments including arts and athletics should be our first priority	12	10	3	3	3	25
Sustainable "Green" buildings should be our first priority	2	1	0	0	0	3
Low operating cost should be our first priority	0	1	0	0	0	1
What was good enough when I went to school is good enough today	1	0	0	0	0	1

6.) Do you believe the physical condition of the CH-UH facilities is consistent from school to school? (multiple choice)

	Yes	No	Don't Know	Total
Yes, a elementary student	1	0	1	2
Yes, a middle school student	0	0	0	0
Yes, a high school student	3	1	0	4
Yes, combination	1	4	0	5
No	3	13	2	18
Parent of a present or former student(s) in the CH-UH Schools	4	2	1	7
Teacher for CH-UH Schools	1	2	0	3
Administrator for CH-UH Schools	1	4	1	6
Public Official	1	2	0	3
Business/Professional	1	4	1	6
Other	1	3	0	4
0-5 years	1	3	2	6
5-10 years	1	1	0	2
10-15 years	0	3	1	4
15-20 years	3	2	0	5
over 20 years	4	9	0	13
Improve the physical quality of the CH-UH facilities	1	3	0	4
Improve the way we deliver education	2	5	1	8
Important to the future of our community	5	7	2	14
Concern for the long term financial strength of the CH-UH City School district	1	0	0	1
Other	0	2	0	2
Quality learning environments including arts and athletics should be our first priority	8	13	3	24
Sustainable "Green" buildings should be our first priority	1	2	0	3
Low operating cost should be our first priority	0	1	0	1
What was good enough when I went to school is good enough today	0	1	0	1

7.) Do you believe the physical condition of a school affects the educational outcome of students? (multiple choice)

	Yes	No	Don't Know	Total
Yes, a elementary student	1	0	0	1
Yes, a middle school student	0	0	0	0
Yes, a high school student	3	0	1	4
Yes, combination	4	0	1	5
No	18	1	0	19
Parent of a present or former student(s) in the CH-UH Schools	4	1	1	6
Teacher for CH-UH Schools	3	0	0	3
Administrator for CH-UH Schools	6	0	0	6
Public Official	3	0	0	3
Business/Professional	5	1	1	7
Other	4	0	0	4
0-5 years	5	0	0	5
5-10 years	2	0	0	2
10-15 years	4	0	0	4
15-20 years	4	0	1	5
over 20 years	11	2	1	14
Improve the physical quality of the CH-UH facilities	4	0	0	4
Improve the way we deliver education	7	1	0	8
Important to the future of our community	11	1	2	14
Concern for the long term financial strength of the CH-UH City School district	1	0	0	1
Other	2	0	0	2
Quality learning environments including arts and athletics should be our first priority	21	2	2	25
Sustainable "Green" buildings should be our first priority	2	0	0	2
Low operating cost should be our first priority	1	0	0	1
What was good enough when I went to school is good enough today	1	0	0	1

8.) To the best of your knowledge, do the facilities support our educational programs and 21st Century Learning? (multiple choice)

	Yes	No	Don't Know	Total
Yes, a elementary student	1	1	0	2
Yes, a middle school student	0	0	0	0
Yes, a high school student	1	3	0	4
Yes, combination	1	2	2	5
No	2	9	7	18
Parent of a present or former student(s) in the CH-UH Schools	3	4	0	7
Teacher for CH-UH Schools	1	2	0	3
Administrator for CH-UH Schools	0	6	0	6
Public Official	1	0	2	3
Business/Professional	1	2	4	7
Other	0	1	3	4
0-5 years	1	4	1	6
5-10 years	0	2	0	2
10-15 years	1	1	2	4
15-20 years	1	3	1	5
over 20 years	3	5	5	13
Improve the physical quality of the CH-UH facilities	0	3	1	4
Improve the way we deliver education	1	5	1	7
Important to the future of our community	4	5	6	15
Concern for the long term financial strength of the CH-UH City School district	0	1	0	1
Other	1	1	0	2
Quality learning environments including arts and athletics should be our first priority	5	14	6	25
Sustainable "Green" buildings should be our first priority	1	1	1	3
Low operating cost should be our first priority	0	0	1	1
What was good enough when I went to school is good enough today	0	0	1	1

9.) Of the following, which best describes your philosophy on school facilities? (multiple choice)

	learning environments including arts and athletics should be our first priority	Sustainable "Green" buildings should be our first priority	Low operating cost should be our first priority	What was good enough when I went to school is good enough today	Total
Yes, a elementary student	1	1	0	0	2
Yes, a middle school student	0	0	0	0	0
Yes, a high school student	4	0	0	0	4
Yes, combination	4	1	0	0	5
No	15	1	1	1	18
Parent of a present or former student(s) in the CH-UH Schools	6	1	0	0	7
Teacher for CH-UH Schools	3	0	0	0	3
Administrator for CH-UH Schools	6	0	0	0	6
Public Official	2	0	0	1	3
Business/Professional	5	2	0	0	7
Other	3	0	1	0	4
0-5 years	5	1	0	0	6
5-10 years	2	0	0	0	2
10-15 years	4	0	0	0	4
15-20 years	4	1	0	0	5
over 20 years	10	1	1	1	13
Improve the physical quality of the CH-UH facilities	3	0	0	1	4
Improve the way we deliver education	6	1	0	0	7
Important to the future of our community	12	2	1	0	15
Concern for the long term financial strength of the CH-UH City School district	1	0	0	0	1
Other	2	0	0	0	2
Quality learning environments including arts and athletics should be our first priority	25	0	0	0	25
Sustainable "Green" buildings should be our first priority	0	3	0	0	3
Low operating cost should be our first priority	0	0	1	0	1
What was good enough when I went to school is good enough today	0	0	0	1	1

10.) Planning for the CH-UH Facilities public input is critical for success (multiple choice)

	Agree	Disagree	Neutral	Total
Yes, a elementary student	2	0	0	2
Yes, a middle school student	0	0	0	0
Yes, a high school student	4	0	0	4
Yes, combination	5	0	0	5
No	17	1	1	19
Parent of a present or former student(s) in the CH-UH Schools	7	0	0	7
Teacher for CH-UH Schools	3	0	0	3
Administrator for CH-UH Schools	6	0	0	6
Public Official	2	0	1	3
Business/Professional	6	1	0	7
Other	4	0	0	4
0-5 years	6	0	0	6
5-10 years	2	0	0	2
10-15 years	4	0	0	4
15-20 years	5	0	0	5
over 20 years	12	1	1	14
Improve the physical quality of the CH-UH facilities	3	0	1	4
Improve the way we deliver education	8	0	0	8
Important to the future of our community	14	1	0	15
Concern for the long term financial strength of the CH-UH City School district	1	0	0	1
Other	2	0	0	2
Quality learning environments including arts and athletics should be our first priority	24	1	0	25
Sustainable "Green" buildings should be our first priority	3	0	0	3
Low operating cost should be our first priority	1	0	0	1
What was good enough when I went to school is good enough today	0	0	1	1

11.) If we need to spend funds to align our facilities with educational goals and outcomes the cost should be... (multiple choice)

	Managed with current budgets	Capitalized in a bond issue that the public must approve	Combination of budget management and public approved bond issue	Total
Yes, a elementary student	0	0	2	2
Yes, a middle school student	0	0	0	0
Yes, a high school student	0	0	4	4
Yes, combination	0	0	5	5
No	0	4	15	19
Parent of a present or former student(s) in the CH-UH Schools	0	0	6	6
Teacher for CH-UH Schools	0	1	2	3
Administrator for CH-UH Schools	0	2	4	6
Public Official	0	0	3	3
Business/Professional	0	1	6	7
Other	0	0	4	4
0-5 years	0	2	4	6
5-10 years	0	0	2	2
10-15 years	0	0	4	4
15-20 years	0	0	5	5
over 20 years	0	2	11	13
Improve the physical quality of the CH-UH facilities	0	1	3	4
Improve the way we deliver education	0	2	5	7
Important to the future of our community	0	1	14	15
Concern for the long term financial strength of the CH-UH City School district	0	0	1	1
Other	0	0	2	2
Quality learning environments including arts and athletics should be our first priority	0	4	20	24
Sustainable "Green" buildings should be our first priority	0	0	3	3
Low operating cost should be our first priority	0	0	1	1
What was good enough when I went to school is good enough today	0	0	1	1

12.) If it is determined that funding is needed then what timeline should be considered? (multiple choice)

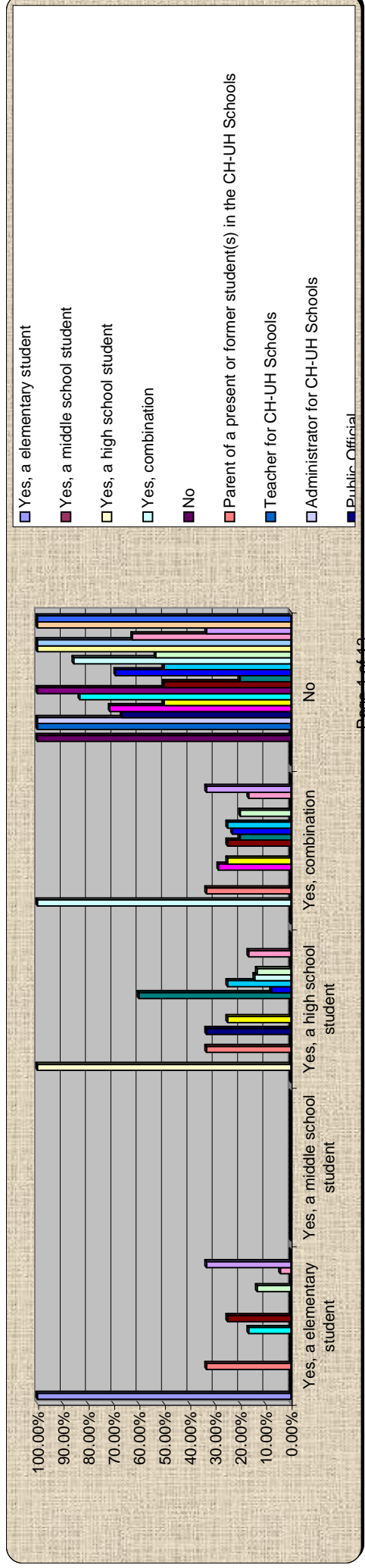
	Wait till the				Total
	Quickly as possible	economy improves	Multi year phased plan	Don't Know	
Yes, a elementary student	0	0	2	0	2
Yes, a middle school student	0	0	0	0	0
Yes, a high school student	2	0	1	1	4
Yes, combination	1	0	3	1	5
No	2	0	14	2	18
Parent of a present or former student(s) in the CH-UH Schools	3	0	4	0	7
Teacher for CH-UH Schools	1	0	1	1	3
Administrator for CH-UH Schools	1	0	4	1	6
Public Official	0	0	3	0	3
Business/Professional	0	0	6	1	7
Other	0	0	3	1	4
0-5 years	1	0	4	1	6
5-10 years	0	0	2	0	2
10-15 years	0	0	3	1	4
15-20 years	1	0	3	1	5
over 20 years	3	0	9	1	13
Improve the physical quality of the CH-UH facilities	3	0	1	0	4
Improve the way we deliver education	1	0	4	2	7
Important to the future of our community	1	0	13	1	15
Concern for the long term financial strength of the CH-UH City School district	0	0	1	0	1
Other	0	0	1	1	2
Quality learning environments including arts and athletics should be our first priority	5	0	16	4	25
Sustainable "Green" buildings should be our first priority	0	0	3	0	3
Low operating cost should be our first priority	0	0	1	0	1
What was good enough when I went to school is good enough today	0	0	1	0	1

Turning Graphical Comparison

Session Name: Current Session
 Created: 9/28/2010 9:12 PM

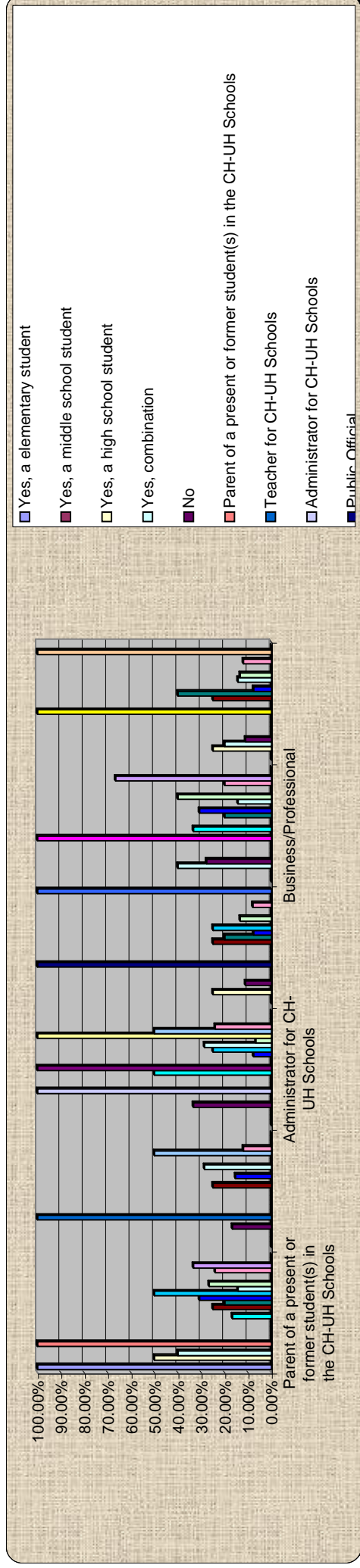
1.) Are you a parent of a student in the CH-UH schools? (multiple choice)

	Yes, a elementary student	Yes, a middle school student	Yes, a high school student	Yes, combination	No
Yes, a elementary student	100.00%	0.00%	0.00%	0.00%	0.00%
Yes, a middle school student	0.00%	0.00%	0.00%	0.00%	0.00%
Yes, a high school student	0.00%	0.00%	100.00%	0.00%	0.00%
Yes, combination	0.00%	0.00%	0.00%	100.00%	0.00%
No	0.00%	0.00%	0.00%	0.00%	100.00%
Parent of a present or former student(s) in the CH-UH Schools	33.33%	0.00%	33.33%	33.33%	0.00%
Teacher for CH-UH Schools	0.00%	0.00%	0.00%	0.00%	100.00%
Administrator for CH-UH Schools	0.00%	0.00%	0.00%	0.00%	100.00%
Public Official	0.00%	0.00%	33.33%	0.00%	66.67%
Business/Professional	0.00%	0.00%	0.00%	28.57%	71.43%
Other	0.00%	0.00%	25.00%	25.00%	50.00%
0-5 years	16.67%	0.00%	0.00%	0.00%	83.33%
5-10 years	0.00%	0.00%	0.00%	0.00%	100.00%
10-15 years	25.00%	0.00%	0.00%	25.00%	50.00%
15-20 years	0.00%	0.00%	60.00%	20.00%	20.00%
over 20 years	0.00%	0.00%	7.69%	23.08%	69.23%
Improve the physical quality of the CH-UH facilities	0.00%	0.00%	25.00%	25.00%	50.00%
Improve the way we deliver education	0.00%	0.00%	14.29%	0.00%	85.71%
Important to the future of our community	13.33%	0.00%	13.33%	20.00%	53.33%
Concern for the long term financial strength of the CH-UH City School district	0.00%	0.00%	0.00%	0.00%	100.00%
Other	0.00%	0.00%	0.00%	0.00%	100.00%
Quality learning environments including arts and athletics should be our first priority	4.17%	0.00%	16.67%	16.67%	62.50%
Sustainable "Green" buildings should be our first priority	33.33%	0.00%	0.00%	33.33%	33.33%
Low operating cost should be our first priority	0.00%	0.00%	0.00%	0.00%	100.00%
What was good enough when I went to school is good enough today	0.00%	0.00%	0.00%	0.00%	100.00%



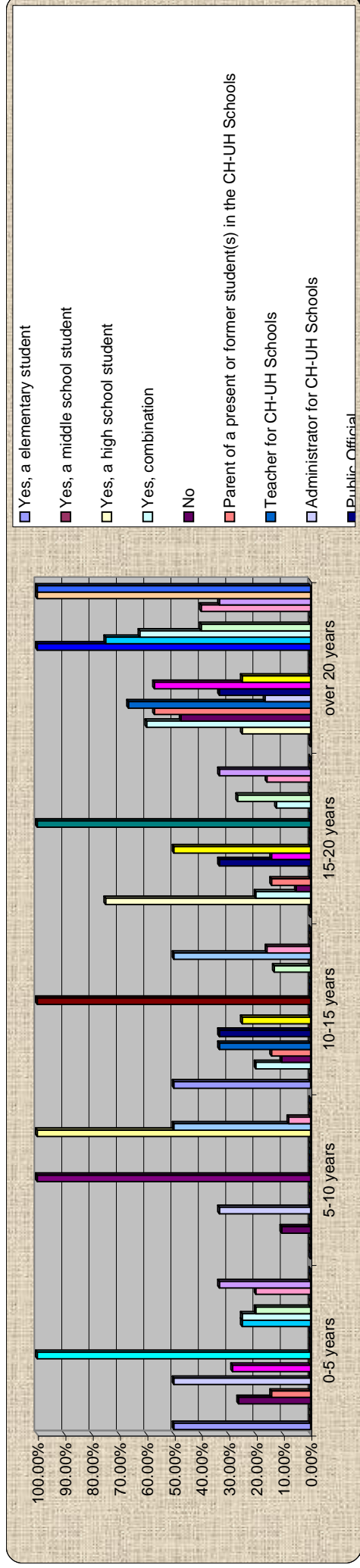
2.) Of the following which best describes you? (multiple choice)

	Parent of a present or former student(s) in the CH-UH Schools	Teacher for CH-UH Schools	Administrator for CH-UH Schools	Public Official	Business/Professor	Other
Yes, a elementary student	100.00%	0.00%	0.00%	0.00%	0.00%	0.00%
Yes, a middle school student	0.00%	0.00%	0.00%	0.00%	0.00%	0.00%
Yes, a high school student	50.00%	0.00%	0.00%	25.00%	0.00%	25.00%
Yes, combination	40.00%	0.00%	0.00%	0.00%	40.00%	20.00%
No	0.00%	16.67%	33.33%	11.11%	27.78%	11.11%
Parent of a present or former student(s) in the CH-UH Schools	100.00%	0.00%	0.00%	0.00%	0.00%	0.00%
Teacher for CH-UH Schools	0.00%	100.00%	0.00%	0.00%	0.00%	0.00%
Administrator for CH-UH Schools	0.00%	0.00%	100.00%	0.00%	0.00%	0.00%
Public Official	0.00%	0.00%	0.00%	100.00%	0.00%	0.00%
Business/Professional	0.00%	0.00%	0.00%	0.00%	100.00%	0.00%
Other	0.00%	0.00%	0.00%	0.00%	0.00%	100.00%
0-5 years	16.67%	0.00%	50.00%	0.00%	33.33%	0.00%
5-10 years	0.00%	0.00%	100.00%	0.00%	0.00%	0.00%
10-15 years	25.00%	25.00%	0.00%	25.00%	0.00%	25.00%
15-20 years	20.00%	0.00%	0.00%	20.00%	20.00%	40.00%
over 20 years	30.77%	15.38%	7.69%	7.69%	30.77%	7.69%
Improve the physical quality of the CH-UH facilities	50.00%	0.00%	25.00%	25.00%	0.00%	0.00%
Improve the way we deliver education	14.29%	28.57%	28.57%	0.00%	14.29%	14.29%
Important to the future of our community	26.67%	0.00%	6.67%	13.33%	40.00%	13.33%
Concern for the long term financial strength of the CH-UH City School district	0.00%	0.00%	100.00%	0.00%	0.00%	0.00%
Other	0.00%	50.00%	0.00%	0.00%	0.00%	0.00%
Quality learning environments including arts and athletics should be our first priority	24.00%	12.00%	24.00%	8.00%	20.00%	12.00%
Sustainable "Green" buildings should be our first priority	33.33%	0.00%	0.00%	0.00%	66.67%	0.00%
Low operating cost should be our first priority	0.00%	0.00%	0.00%	0.00%	0.00%	100.00%
What was good enough when I went to school is good enough today	0.00%	0.00%	0.00%	100.00%	0.00%	0.00%



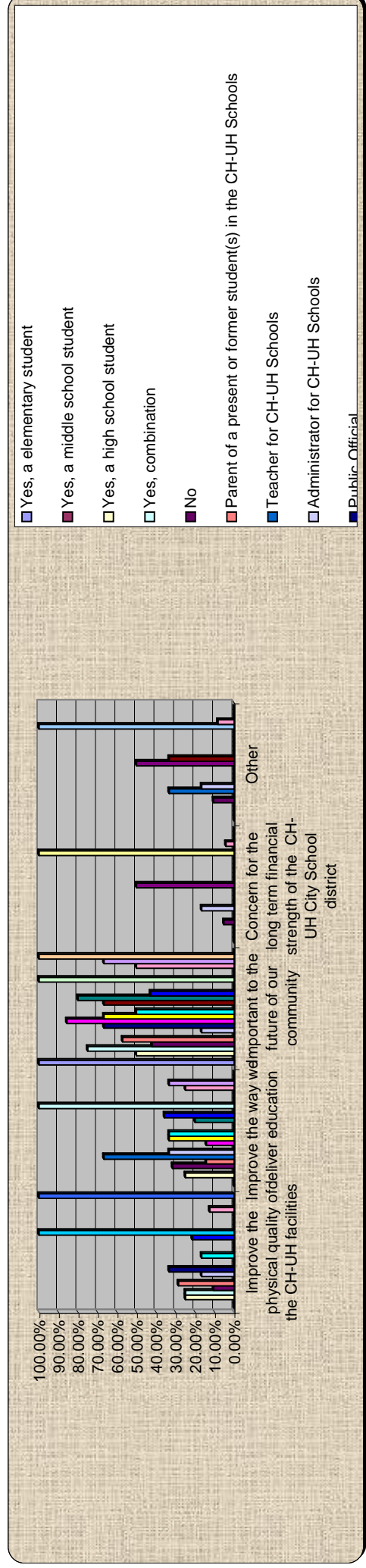
3.) How long have you lived or worked in the CH-UH City School District? (multiple choice)

	0-5 years	5-10 years	10-15 years	15-20 years	over 20 years
Yes, a elementary student	50.00%	0.00%	50.00%	0.00%	0.00%
Yes, a middle school student	0.00%	0.00%	0.00%	0.00%	0.00%
Yes, a high school student	0.00%	0.00%	0.00%	75.00%	25.00%
Yes, combination	0.00%	0.00%	20.00%	20.00%	60.00%
No	26.32%	10.53%	10.53%	5.26%	47.37%
Parent of a present or former student(s) in the CH-UH Schools	14.29%	0.00%	14.29%	14.29%	57.14%
Teacher for CH-UH Schools	0.00%	0.00%	33.33%	0.00%	66.67%
Administrator for CH-UH Schools	50.00%	33.33%	0.00%	0.00%	16.67%
Public Official	0.00%	0.00%	33.33%	33.33%	33.33%
Business/Professional	28.57%	0.00%	0.00%	14.29%	57.14%
Other	0.00%	0.00%	25.00%	50.00%	25.00%
0-5 years	100.00%	0.00%	0.00%	0.00%	0.00%
5-10 years	0.00%	100.00%	0.00%	0.00%	0.00%
10-15 years	0.00%	0.00%	100.00%	0.00%	0.00%
15-20 years	0.00%	0.00%	0.00%	100.00%	0.00%
over 20 years	0.00%	0.00%	0.00%	0.00%	100.00%
Improve the physical quality of the CH-UH facilities	25.00%	0.00%	0.00%	0.00%	75.00%
Improve the way we deliver education	20.00%	0.00%	0.00%	12.50%	62.50%
Important to the future of our community	20.00%	0.00%	13.33%	26.67%	40.00%
Concern for the long term financial strength of the CH-UH City School district	0.00%	100.00%	0.00%	0.00%	0.00%
Other	0.00%	50.00%	50.00%	0.00%	0.00%
Quality learning environments including arts and athletics should be our first priority	20.00%	8.00%	16.00%	16.00%	40.00%
Sustainable "Green" buildings should be our first priority	33.33%	0.00%	0.00%	33.33%	33.33%
Low operating cost should be our first priority	0.00%	0.00%	0.00%	0.00%	100.00%
What was good enough when I went to school is good enough today	0.00%	0.00%	0.00%	0.00%	100.00%



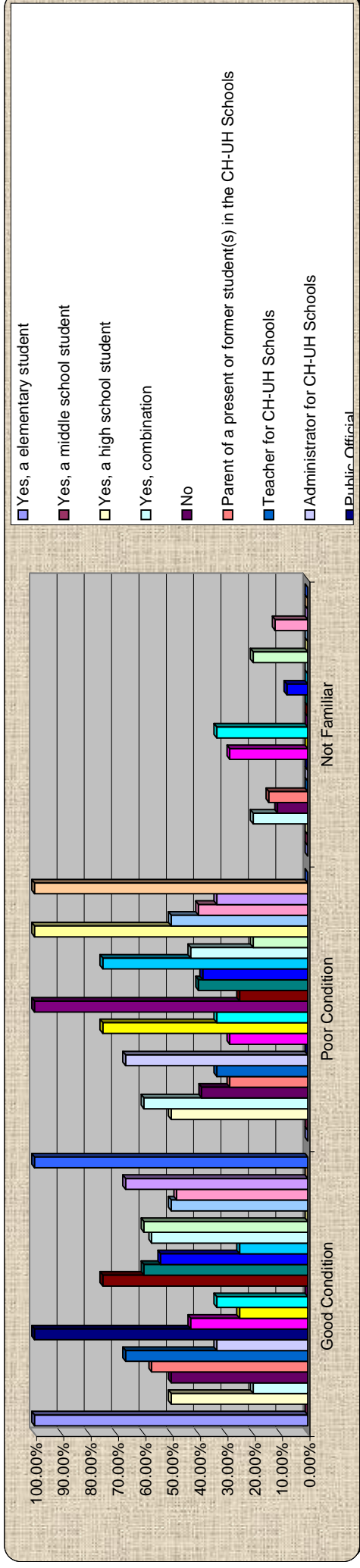
4.) Of the Following, which best describes your reason for participating on the committee? (multiple choice)

Improve the physical quality of these way we deliver education in the CH-UH Schools	100.00%	0.00%	0.00%	0.00%	0.00%
Yes, a elementary student	0.00%	0.00%	0.00%	0.00%	0.00%
Yes, a middle school student	0.00%	0.00%	0.00%	0.00%	0.00%
Yes, a high school student	25.00%	0.00%	50.00%	0.00%	0.00%
Yes, combination	25.00%	0.00%	75.00%	0.00%	0.00%
No	10.53%	31.58%	42.11%	5.26%	10.53%
Parent of a present or former student(s) in the CH-UH Schools	28.57%	14.29%	57.14%	0.00%	0.00%
Teacher for CH-UH Schools	0.00%	66.67%	0.00%	0.00%	33.33%
Administrator for CH-UH Schools	16.67%	33.33%	16.67%	16.67%	16.67%
Public Official	33.33%	0.00%	66.67%	0.00%	0.00%
Business/Professional	0.00%	14.29%	85.71%	0.00%	0.00%
Other	0.00%	33.33%	66.67%	0.00%	0.00%
0-5 years	16.67%	33.33%	50.00%	0.00%	0.00%
5-10 years	0.00%	0.00%	0.00%	50.00%	50.00%
10-15 years	0.00%	0.00%	66.67%	0.00%	33.33%
15-20 years	0.00%	20.00%	80.00%	0.00%	0.00%
over 20 years	21.43%	35.71%	42.86%	0.00%	0.00%
Improve the physical quality of the CH-UH facilities	100.00%	0.00%	0.00%	0.00%	0.00%
Important to the future of our community	0.00%	100.00%	0.00%	0.00%	0.00%
Concern for the long term financial strength of the CH-UH City School district	0.00%	0.00%	100.00%	0.00%	0.00%
Other	0.00%	0.00%	0.00%	100.00%	0.00%
Quality learning environments including arts and athletics should be our first priority	0.00%	0.00%	0.00%	0.00%	100.00%
Sustainable "Green" buildings should be our first priority	12.50%	25.00%	50.00%	4.17%	8.33%
Low operating cost should be our first priority	0.00%	33.33%	66.67%	0.00%	0.00%
What was good enough when I went to school is good enough today	0.00%	0.00%	100.00%	0.00%	0.00%



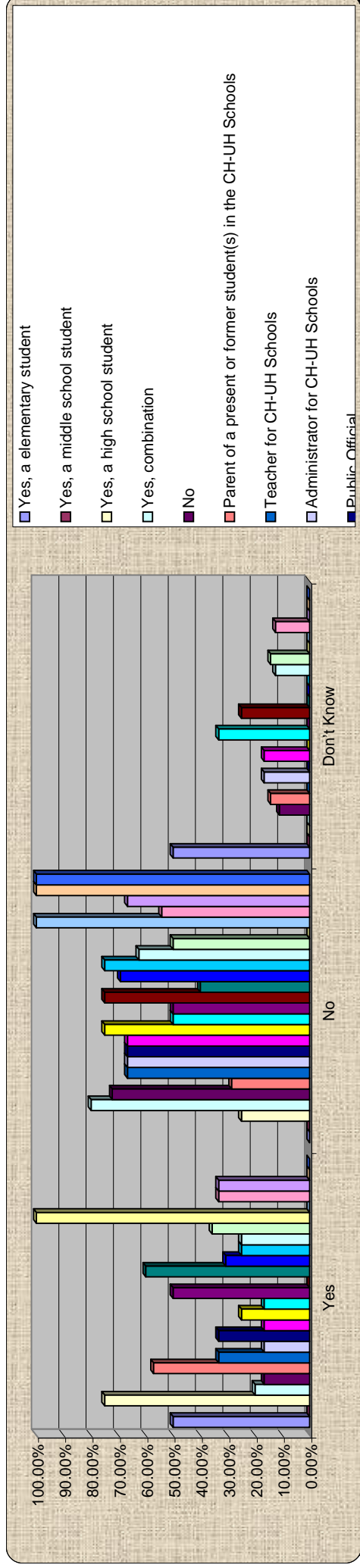
5.) To the best of your knowledge, how would you rate the physical condition CH-UH school facilities? (multiple choice)

	Good Condition	Poor Condition	Not Familiar
Yes, a elementary student	100.00%	0.00%	0.00%
Yes, a middle school student	0.00%	0.00%	0.00%
Yes, a high school student	50.00%	50.00%	0.00%
Yes, combination	20.00%	60.00%	20.00%
No	50.00%	38.89%	11.11%
Parent of a present or former student(s) in the CH-UH Schools	57.14%	28.57%	14.29%
Teacher for CH-UH Schools	66.67%	33.33%	0.00%
Administrator for CH-UH Schools	33.33%	66.67%	0.00%
Public Official	100.00%	0.00%	0.00%
Business/Professional	42.86%	28.57%	28.57%
Other	25.00%	75.00%	0.00%
0-5 years	33.33%	33.33%	33.33%
5-10 years	0.00%	100.00%	0.00%
10-15 years	75.00%	25.00%	0.00%
15-20 years	60.00%	40.00%	0.00%
over 20 years	53.85%	38.46%	7.69%
Improve the physical quality of the CH-UH facilities	25.00%	75.00%	0.00%
Improve the way we deliver education	57.14%	42.86%	0.00%
Important to the future of our community	60.00%	20.00%	20.00%
Concern for the long term financial strength of the CH-UH City School district	0.00%	100.00%	0.00%
Other	50.00%	50.00%	0.00%
Quality learning environments including arts and athletics should be our first priority	48.00%	40.00%	12.00%
Sustainable "Green" buildings should be our first priority	66.67%	33.33%	0.00%
Low operating cost should be our first priority	0.00%	100.00%	0.00%
What was good enough when I went to school is good enough today	100.00%	0.00%	0.00%



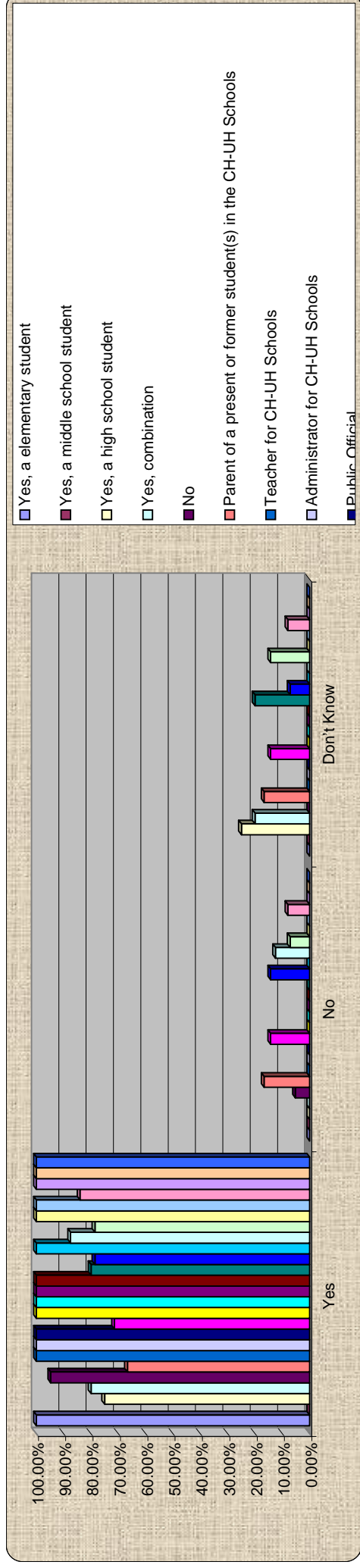
6.) Do you believe the physical condition of the CH-UH facilities is consistent from school to school? (multiple choice)

	Yes	No	Don't Know
Yes, a elementary student	50.00%	0.00%	50.00%
Yes, a middle school student	0.00%	0.00%	0.00%
Yes, a high school student	75.00%	25.00%	0.00%
Yes, combination	20.00%	80.00%	0.00%
No	16.67%	72.22%	11.11%
Parent of a present or former student(s) in the CH-UH Schools	57.14%	28.57%	14.29%
Teacher for CH-UH Schools	33.33%	66.67%	0.00%
Administrator for CH-UH Schools	16.67%	66.67%	16.67%
Public Official	33.33%	66.67%	0.00%
Business/Professional	16.67%	66.67%	16.67%
Other	25.00%	75.00%	0.00%
0-5 years	16.67%	50.00%	33.33%
5-10 years	50.00%	50.00%	0.00%
10-15 years	0.00%	75.00%	25.00%
15-20 years	60.00%	40.00%	0.00%
over 20 years	30.77%	69.23%	0.00%
Improve the physical quality of the CH-UH facilities	25.00%	75.00%	0.00%
Improve the way we deliver education	25.00%	62.50%	12.50%
Important to the future of our community	35.71%	50.00%	14.29%
Concern for the long term financial strength of the CH-UH City School district	100.00%	0.00%	0.00%
Other	0.00%	100.00%	0.00%
Quality learning environments including arts and athletics should be our first priority	33.33%	54.17%	12.50%
Sustainable "Green" buildings should be our first priority	33.33%	66.67%	0.00%
Low operating cost should be our first priority	0.00%	100.00%	0.00%
What was good enough when I went to school is good enough today	0.00%	100.00%	0.00%



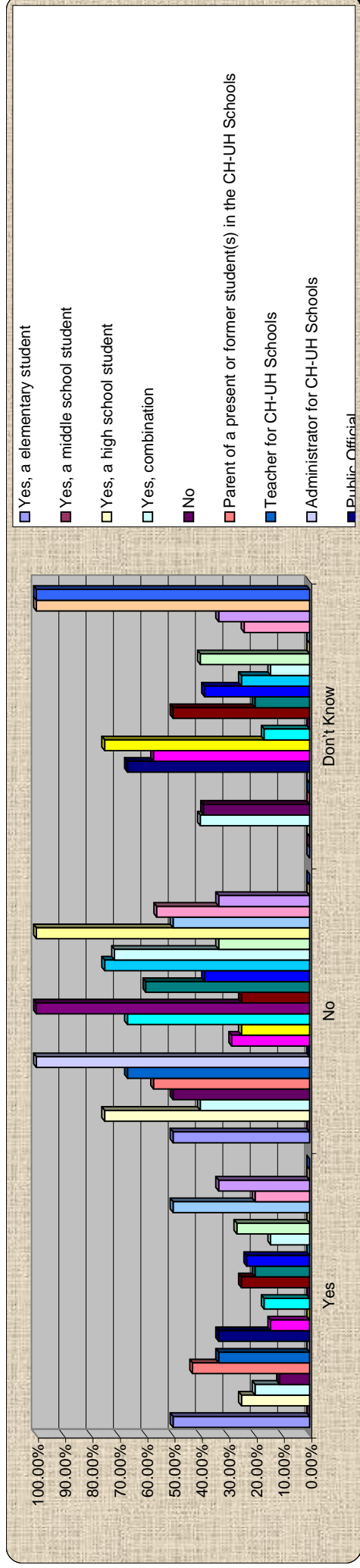
7.) Do you believe the physical condition of a school affects the educational outcome of students? (multiple choice)

	Yes	No	Don't Know
Yes, a elementary student	100.00%	0.00%	0.00%
Yes, a middle school student	0.00%	0.00%	0.00%
Yes, a high school student	75.00%	0.00%	25.00%
Yes, combination	80.00%	0.00%	20.00%
No	94.74%	5.26%	0.00%
Parent of a present or former student(s) in the CH-UH Schools	66.67%	16.67%	16.67%
Teacher for CH-UH Schools	100.00%	0.00%	0.00%
Administrator for CH-UH Schools	100.00%	0.00%	0.00%
Public Official	100.00%	0.00%	0.00%
Business/Professional	71.43%	14.29%	14.29%
Other	100.00%	0.00%	0.00%
0-5 years	100.00%	0.00%	0.00%
5-10 years	100.00%	0.00%	0.00%
10-15 years	100.00%	0.00%	0.00%
15-20 years	80.00%	0.00%	20.00%
over 20 years	78.57%	14.29%	7.14%
Improve the physical quality of the CH-UH facilities	100.00%	0.00%	0.00%
Improve the way we deliver education	87.50%	12.50%	0.00%
Important to the future of our community	78.57%	7.14%	14.29%
Concern for the long term financial strength of the CH-UH City School district	100.00%	0.00%	0.00%
Other	100.00%	0.00%	0.00%
Quality learning environments including arts and athletics should be our first priority	84.00%	8.00%	8.00%
Sustainable "Green" buildings should be our first priority	100.00%	0.00%	0.00%
Low operating cost should be our first priority	100.00%	0.00%	0.00%
What was good enough when I went to school is good enough today	100.00%	0.00%	0.00%



8.) To the best of your knowledge, do the facilities support our educational programs and 21st Century Learning? (multiple choice)

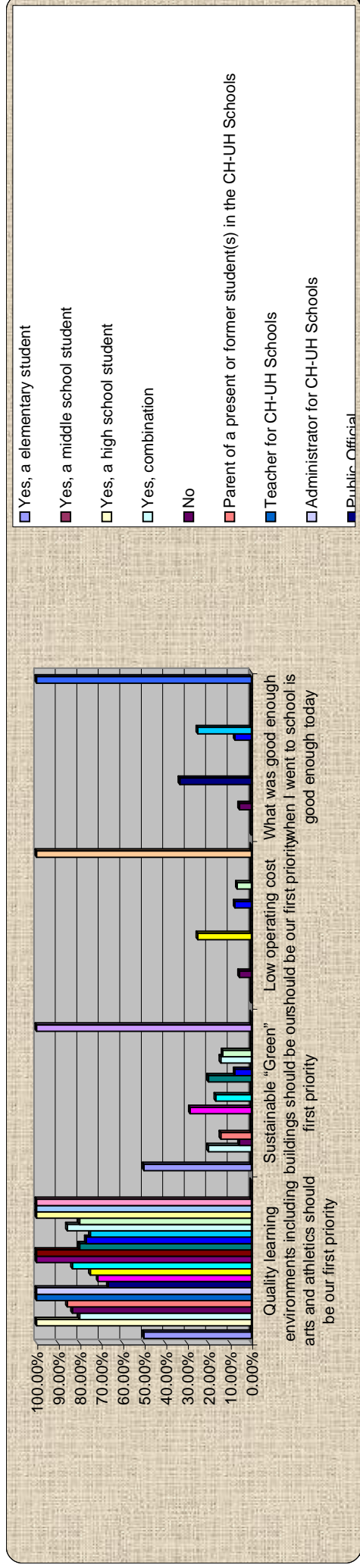
	Yes	No	Don't Know
Yes, a elementary student	50.00%	50.00%	0.00%
Yes, a middle school student	0.00%	0.00%	0.00%
Yes, a high school student	25.00%	75.00%	0.00%
Yes, combination	20.00%	40.00%	40.00%
No	11.11%	50.00%	38.89%
Parent of a present or former student(s) in the CH-UH Schools	42.86%	57.14%	0.00%
Teacher for CH-UH Schools	33.33%	66.67%	0.00%
Administrator for CH-UH Schools	0.00%	100.00%	0.00%
Public Official	33.33%	0.00%	66.67%
Business/Professional	14.29%	28.57%	57.14%
Other	0.00%	25.00%	75.00%
0-5 years	16.67%	66.67%	16.67%
5-10 years	0.00%	100.00%	0.00%
10-15 years	25.00%	25.00%	50.00%
15-20 years	20.00%	60.00%	20.00%
over 20 years	23.08%	38.46%	38.46%
Improve the physical quality of the CH-UH facilities	0.00%	75.00%	25.00%
Improve the way we deliver education	14.29%	71.43%	14.29%
Important to the future of our community	26.67%	33.33%	40.00%
Concern for the long term financial strength of the CH-UH City School district	0.00%	100.00%	0.00%
Other	50.00%	50.00%	0.00%
Quality learning environments including arts and athletics should be our first priority	20.00%	56.00%	24.00%
Sustainable "Green" buildings should be our first priority	33.33%	33.33%	33.33%
Low operating cost should be our first priority	0.00%	0.00%	100.00%
What was good enough when I went to school is good enough today	0.00%	0.00%	100.00%



9.) Of the following, which best describes your philosophy on school facilities? (multiple choice)

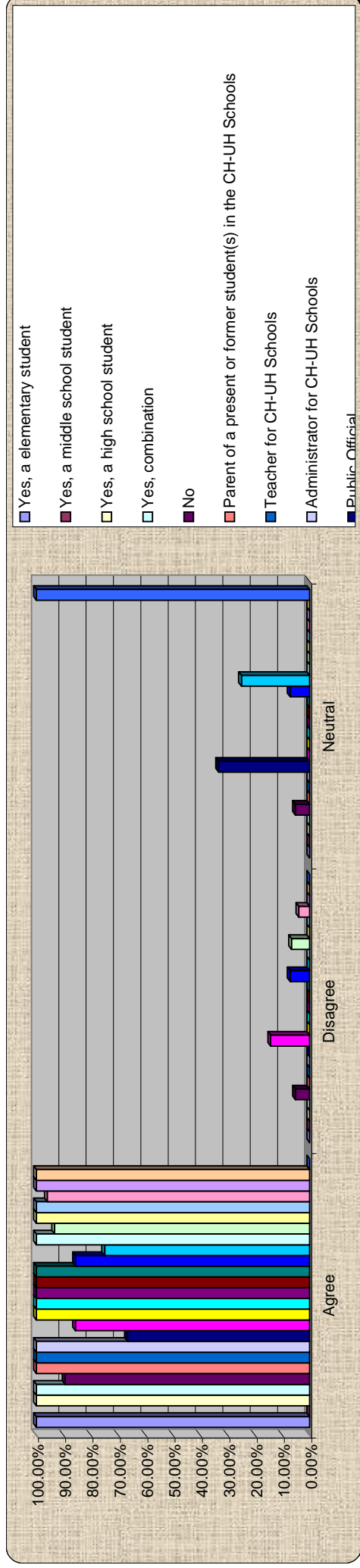
Quality learning environments including arts and at” buildings should be on when I went to school is good enough today

Yes, a elementary student	50.00%	0.00%	0.00%	0.00%	0.00%
Yes, a middle school student	0.00%	0.00%	0.00%	0.00%	0.00%
Yes, a high school student	100.00%	0.00%	0.00%	0.00%	0.00%
Yes, combination	80.00%	20.00%	0.00%	0.00%	0.00%
No	83.33%	5.56%	5.56%	5.56%	5.56%
Parent of a present or former student(s) in the CH-UH Schools	85.71%	14.29%	0.00%	0.00%	0.00%
Teacher for CH-UH Schools	100.00%	0.00%	0.00%	0.00%	0.00%
Administrator for CH-UH Schools	100.00%	0.00%	0.00%	0.00%	0.00%
Public Official	66.67%	0.00%	0.00%	0.00%	33.33%
Business/Professional	71.43%	28.57%	0.00%	0.00%	0.00%
Other	75.00%	0.00%	25.00%	0.00%	0.00%
0-5 years	83.33%	16.67%	0.00%	0.00%	0.00%
5-10 years	100.00%	0.00%	0.00%	0.00%	0.00%
10-15 years	100.00%	0.00%	0.00%	0.00%	0.00%
15-20 years	80.00%	20.00%	0.00%	0.00%	0.00%
over 20 years	76.92%	7.69%	7.69%	0.00%	7.69%
Improve the physical quality of the CH-UH facilities	75.00%	0.00%	0.00%	0.00%	25.00%
Improve the way we deliver education	85.71%	14.29%	0.00%	0.00%	0.00%
Important to the future of our community	80.00%	13.33%	6.67%	0.00%	0.00%
Concern for the long term financial strength of the CH-UH City School district	100.00%	0.00%	0.00%	0.00%	0.00%
Other	100.00%	0.00%	0.00%	0.00%	0.00%
Quality learning environments including arts and athletics should be our first priority	100.00%	0.00%	0.00%	0.00%	0.00%
Sustainable “Green” buildings should be our first priority	0.00%	100.00%	0.00%	0.00%	0.00%
Low operating cost should be our first priority	0.00%	0.00%	100.00%	0.00%	0.00%
What was good enough when I went to school is good enough today	0.00%	0.00%	0.00%	0.00%	100.00%



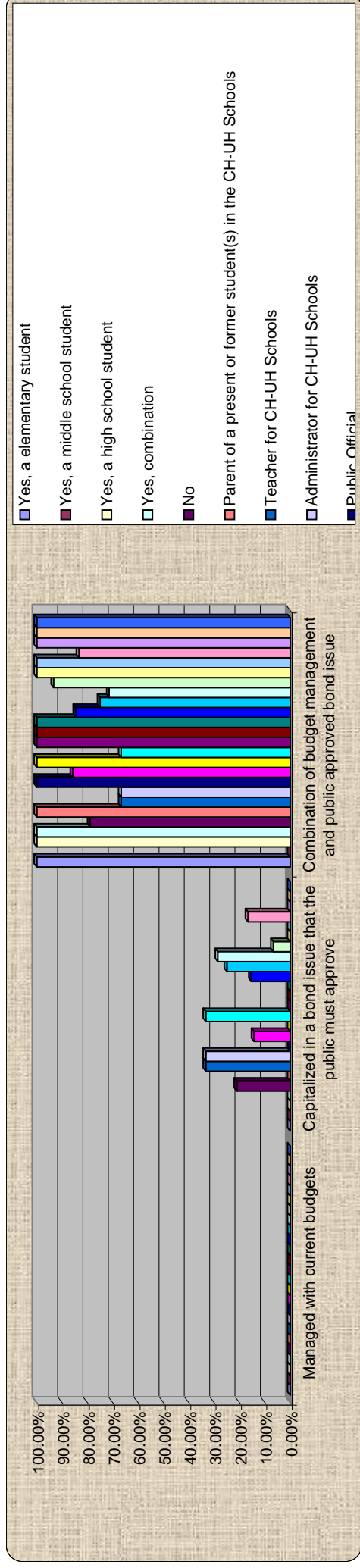
10.) Planning for the CH-UH Facilities public input is critical for success (multiple choice)

	Agree	Disagree	Neutral
Yes, a elementary student	100.00%	0.00%	0.00%
Yes, a middle school student	0.00%	0.00%	0.00%
Yes, a high school student	100.00%	0.00%	0.00%
Yes, combination	100.00%	0.00%	0.00%
No	89.47%	5.26%	5.26%
Parent of a present or former student(s) in the CH-UH Schools	100.00%	0.00%	0.00%
Teacher for CH-UH Schools	100.00%	0.00%	0.00%
Administrator for CH-UH Schools	100.00%	0.00%	0.00%
Public Official	66.67%	0.00%	33.33%
Business/Professional	85.71%	14.29%	0.00%
Other	100.00%	0.00%	0.00%
0-5 years	100.00%	0.00%	0.00%
5-10 years	100.00%	0.00%	0.00%
10-15 years	100.00%	0.00%	0.00%
15-20 years	100.00%	0.00%	0.00%
over 20 years	85.71%	7.14%	7.14%
Improve the physical quality of the CH-UH facilities	75.00%	0.00%	25.00%
Improve the way we deliver education	100.00%	0.00%	0.00%
Important to the future of our community	93.33%	6.67%	0.00%
Concern for the long term financial strength of the CH-UH City School district	100.00%	0.00%	0.00%
Other	100.00%	0.00%	0.00%
Quality learning environments including arts and athletics should be our first priority	96.00%	4.00%	0.00%
Sustainable "Green" buildings should be our first priority	100.00%	0.00%	0.00%
Low operating cost should be our first priority	100.00%	0.00%	0.00%
What was good enough when I went to school is good enough today	0.00%	0.00%	100.00%



11.) If we need to spend funds to align our facilities with educational goals and outcomes the cost should be... (multiple choice)
Managed with current bond issue that the management and public approved bond issue

Yes, a elementary student	0.00%	0.00%	100.00%
Yes, a middle school student	0.00%	0.00%	0.00%
Yes, a high school student	0.00%	0.00%	100.00%
Yes, combination	0.00%	0.00%	100.00%
No	0.00%	21.05%	78.95%
Parent of a present or former student(s) in the CH-UH Schools	0.00%	0.00%	100.00%
Teacher for CH-UH Schools	0.00%	33.33%	66.67%
Administrator for CH-UH Schools	0.00%	33.33%	66.67%
Public Official	0.00%	0.00%	100.00%
Business/Professional	0.00%	14.29%	85.71%
Other	0.00%	0.00%	100.00%
0-5 years	0.00%	33.33%	66.67%
5-10 years	0.00%	0.00%	100.00%
10-15 years	0.00%	0.00%	100.00%
15-20 years	0.00%	0.00%	100.00%
over 20 years	0.00%	0.00%	100.00%
Improve the physical quality of the CH-UH facilities	0.00%	15.38%	84.62%
Improve the way we deliver education	0.00%	25.00%	75.00%
Important to the future of our community	0.00%	28.57%	71.43%
Concern for the long term financial strength of the CH-UH City School district	0.00%	6.67%	93.33%
Other	0.00%	0.00%	100.00%
Quality learning environments including arts and athletics should be our first priority	0.00%	0.00%	100.00%
Sustainable "Green" buildings should be our first priority	0.00%	16.67%	83.33%
Low operating cost should be our first priority	0.00%	0.00%	100.00%
What was good enough when I went to school is good enough today	0.00%	0.00%	100.00%



12.) If it is determined that funding is needed then what timeline should be considered? (multiple choice)

	Quickly as possible	Multi year phased plan	Wait till the economy improves	Don't Know
Yes, a elementary student	0.00%	100.00%	0.00%	0.00%
Yes, a middle school student	0.00%	0.00%	0.00%	0.00%
Yes, a high school student	50.00%	25.00%	25.00%	0.00%
Yes, combination	20.00%	60.00%	20.00%	0.00%
No	11.11%	77.78%	11.11%	0.00%
Parent of a present or former student(s) in the CH-UH Schools	42.86%	57.14%	0.00%	0.00%
Teacher for CH-UH Schools	33.33%	33.33%	33.33%	0.00%
Administrator for CH-UH Schools	16.67%	66.67%	16.67%	0.00%
Public Official	0.00%	100.00%	0.00%	0.00%
Business/Professional	0.00%	85.71%	14.29%	0.00%
Other	0.00%	75.00%	25.00%	0.00%
0-5 years	16.67%	66.67%	16.67%	0.00%
5-10 years	0.00%	100.00%	0.00%	0.00%
10-15 years	0.00%	75.00%	25.00%	0.00%
15-20 years	20.00%	60.00%	20.00%	0.00%
over 20 years	23.08%	69.23%	7.69%	0.00%
Improve the physical quality of the CH-UH facilities	75.00%	25.00%	0.00%	0.00%
Improve the way we deliver education	14.29%	57.14%	28.57%	0.00%
Important to the future of our community	6.67%	86.67%	6.67%	0.00%
Concern for the long term financial strength of the CH-UH City School district	0.00%	100.00%	0.00%	0.00%
Other	0.00%	50.00%	50.00%	0.00%
Quality learning environments including arts and athletics should be our first priority	20.00%	64.00%	16.00%	0.00%
Sustainable "Green" buildings should be our first priority	0.00%	100.00%	0.00%	0.00%
Low operating cost should be our first priority	0.00%	100.00%	0.00%	0.00%
What was good enough when I went to school is good enough today	0.00%	0.00%	0.00%	0.00%

